

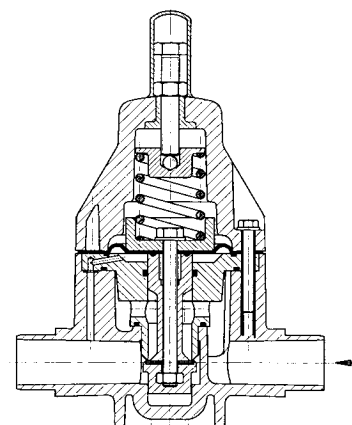
pressure reducing valves

The function of a pressure reducing valve

A pressure reducing valve is installed in-line. It is responsible for maintaining the downstream line pressure to the pressure set at the valve.

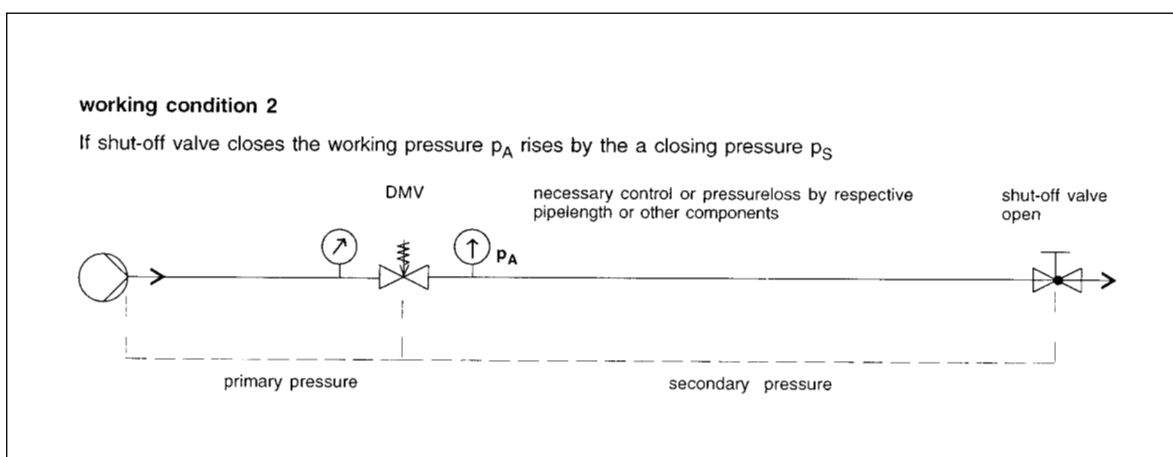
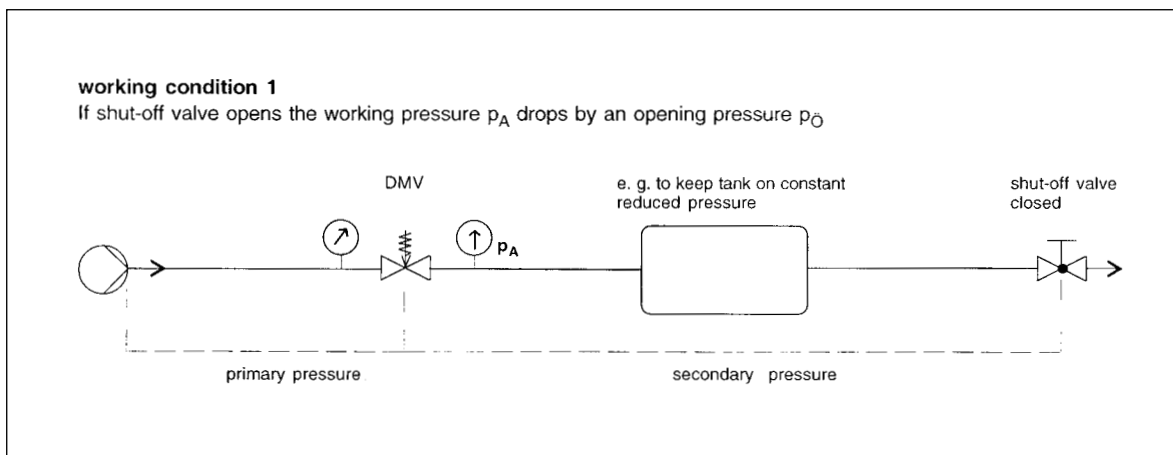
The valve works by responding to changes in the downstream pressure. For example, assume that there are normally two open valves downstream from the pressure regulator. When one is closed, the back pressure will increase. As this happens, the pressure reducing valve would close down to maintain the downstream pressure. When the valve is re-opened the pressure reducing valve would also open up again until the set pressure was reached.

Under operating conditions the pressure reducing valve is always open which means that it is balanced between the inlet pressure (primary side) and the lower outlet/working pressure. At any rise of working pressure at the valve outlet a pressure compensation via the control bore takes place at the area below the diaphragm. The higher working pressure activates the large diaphragm and lifts the piston against the spring force. The flow reduces and the working pressure drops until the balanced condition is reached again. When the working pressure drops this procedure is reversed. The spring force opens the valve seat against the lower pressure force below the diaphragm. The flow rises until the balanced condition is reached again.



Pre-setting or re-adjustment of the valve set pressure is made by removing the protective cap and by setting the control screw. The counter nut is tightened after final adjustment. When used with neutral fluids, many of the pressure reducing or relief valves can be fitted with a pressure gauge if required.

Applications for Pressure Reducing Valves



ASV Stubbe Type 755 Pressure Reducing Valve

Description: In-line adjustable valve used to reduce system pressures and to keep the working pressure constant

Mounting: In any position

Maximum Fluid Pressure at 20°C: 10 bar

Pressure Setting Range: 1 to 9 bar

Hysteresis: Approx. 0.1 to 0.4 bar

Fluid Temperature Range: 0°C-50°C

Construction:

Body: PVC-U

Diaphragm: EPDM with PTFE liner on fluid side

Seats and Seals: EPDM or FPM

End Connections: Union solvent sockets or solvent cement spigots

Features: Adjustable at any time, even during use. Constant pressure control to ± 0.2 bar. Vibration free during operation. Installation is independent of flow direction.

Options: A pressure gauge can be fitted on the primary or also on the secondary side.



Setting Range - 1 to 9 bar

Inch Solvent Cement Unions

EPDM Seals	Inch	Part No.	Price
	1/2	1193 01 /1	286.67
	3/4	1193 02 /1	374.39
	1	1193 03 /1	378.62
	1 1/4	1193 04 /1	463.28
	1 1/2	1193 05 /1	471.77
	2	1193 06 /1	480.30

Inch Solvent Cement Unions

FPM Seals	Inch	Part No.	Price
	1/2	1193 08 /1	286.67
	3/4	1193 09 /1	374.39
	1	1193 10 /1	378.62
	1 1/4	1193 11 /1	483.10
	1 1/2	1193 12 /1	494.41
	2	1193 13 /1	506.34

MM Solvent Cement Unions

EPDM Seals	MM	Part No.	Price
	16	1193 00	286.07
	20	1193 01	300.59
	25	1193 02	392.55
	32	1193 03	386.06
	40	1193 04	485.78
	50	1193 05	494.67
	63	1193 06	503.62

MM Solvent Cement Unions

FPM Seals	MM	Part No.	Price
	16	1193 07	308.10
	20	1193 08	310.40
	25	1193 09	404.40
	32	1193 10	409.49
	40	1193 11	506.54
	50	1193 12	518.41
	63	1193 13	530.92

MM Solvent Cement Spigots

EPDM Seals	MM	Part No.	Price
	16	1220 48	275.49
	20	1220 49	275.49
	25	1220 50	362.32
	32	1220 51	362.32
	40	1220 52	444.31
	50	1220 53	444.31
	63	1220 54	444.31

MM Solvent Cement Spigots

FPM Seals	MM	Part No.	Price
	16	1220 55	294.85
	20	1220 56	294.85
	25	1220 57	386.56
	32	1220 58	386.56
	40	1220 59	476.20
	50	1220 60	476.20
	63	1220 61	476.20

ASV Stubbe Type 765 Pressure Reducing Valve

Description: In-line adjustable valve used to reduce system pressures and to keep the working pressure constant

Mounting: In any position

Maximum Fluid Pressure at 20°C: 10 bar

Pressure Setting Range: 0.5 to 9 bar

Hysteresis: Approx. 0.1 to 0.4 bar

Fluid Temperature Range: 0°C-50°C

Construction:

Body: PVC-U

Diaphragm: EPDM with PTFE liner on fluid side

Seats and Seals: EPDM or FPM

End Connections: Union solvent sockets or solvent cement spigots

Features: Adjustable at any time, even during use. Constant pressure control to ± 0.2 bar. Vibration free during operation. Installation is independent of flow direction.

Options: A pressure gauge can be fitted on the primary or also on the secondary side.



Setting Range - 0.5 to 9 bar

Inch Solvent Cement Unions

EPDM Seals	Size	Part No.	Price
	1/2	1193 43 /1	307.95
	3/4	1193 44 /1	400.52
	1	1193 45 /1	403.30
	1 1/4	1193 46 /1	485.18
	1 1/2	1193 47 /1	493.09
	2	1193 48 /1	499.27

Inch Solvent Cement Unions

FPM Seals	Size	Part No.	Price
	1/2	1193 50 /1	317.21
	3/4	1193 51 /1	411.69
	1	1193 52 /1	415.37
	1 1/4	1193 53 /1	505.00
	1 1/2	1193 54 /1	515.58
	2	1193 55 /1	525.54

MM Solvent Cement Unions

EPDM Seals	Size	Part No.	Price
	16	1193 42	307.24
	20	1193 43	307.95
	25	1193 44	419.96
	32	1193 45	422.87
	40	1193 46	508.71
	50	1193 47	517.03
	63	1193 48	523.51

MM Solvent Cement Unions

FPM Seals	Size	Part No.	Price
	16	1193 49	330.31
	20	1193 50	332.60
	25	1193 51	431.68
	32	1193 52	435.53
	40	1193 53	529.51
	50	1193 54	540.62
	63	1193 55	551.05

MM Solvent Cement Spigots

EPDM Seals	Size	Part No.	Price
	16	1220 90	297.37
	20	1220 91	297.37
	25	1220 92	387.73
	32	1220 93	387.73
	40	1220 94	465.48
	50	1220 95	465.48
	63	1220 96	465.48

MM Solvent Cement Spigots

FPM Seals	Size	Part No.	Price
	16	1220 97	316.90
	20	1220 98	316.90
	25	1220 99	413.21
	32	1221 00	394.08
	40	1221 01	474.58
	50	1221 02	474.58
	63	1221 03	474.58

ASV Stubbe Type 750 Pressure Reducing Valve

Description: In-line adjustable valve used to reduce system pressures and to keep the working pressure constant

Mounting: In any position

Maximum Fluid Pressure at 20°C: 10 bar

Pressure Setting Range: 1 to 6 bar

Hysteresis: Approx. 0.1 to 0.4 bar

Fluid Temperature Range: 0°C-50°C

Construction:

Body: PVC-U

Diaphragm: EPDM with PTFE liner on fluid side

Seats and Seals: EPDM or FPM

End Connections: Solvent cement spigots

Features: Adjustable at any time, even during use. Constant pressure control to ± 0.2 bar. Installation is independent of flow direction.



Setting Range - 1 to 6 bar

MM Solvent Cement Spigots

EPDM Seals	75	1111 73	1399.53
	90	1111 74	3324.10

Valve Tags

We manufacture laminated plastic or stainless steel valve tags to order.



Laminated Plastic

38mm Diameter	engraved one side	Code: LAMTAG38	Price: 3.65
38mm Diameter	engraved two sides	Code: LAMTAG 38/2	Price: 4.37
50mm Diameter	engraved one side	Code: LAMTAG 50	Price: 3.65
50mm Diameter	engraved two sides	Code: LAMTAG 50/2	Price: 4.37

Stainless Steel

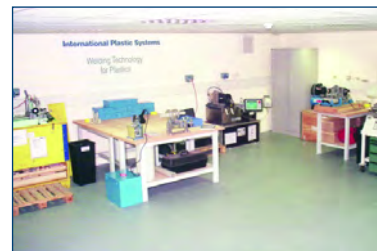
Rectangular tag	engraved one side	Code: S.S.TAG	Price: 3.84
-----------------	-------------------	---------------	-------------

Don't know how to use a product?

Give our expert team a call:

0800 975 79 71

Or from outside of the UK: +44 191 521 3111



The function of a pressure relief valve

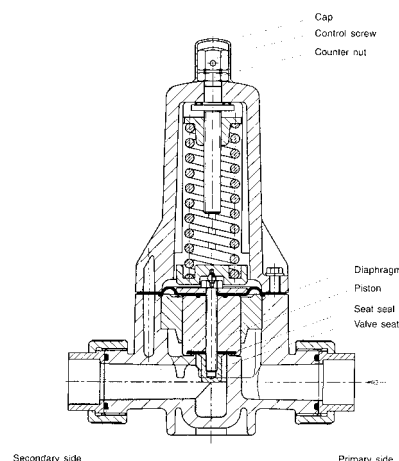
A pressure relief valve is most often used to protect a system from over-pressurisation, but it can also be used to maintain a constant upstream pressure or even as a non-return valve in certain installations.

Not normally installed as an in-line valve, it only opens when the system pressure exceeds the pressure set against the diaphragm of the valve. When this happens, the excess pressure forces the valve piston off its seat, compressing the spring and allowing fluid to flow through the valve body to discharge. Damping at the valve piston suppresses vibration and fluttering.

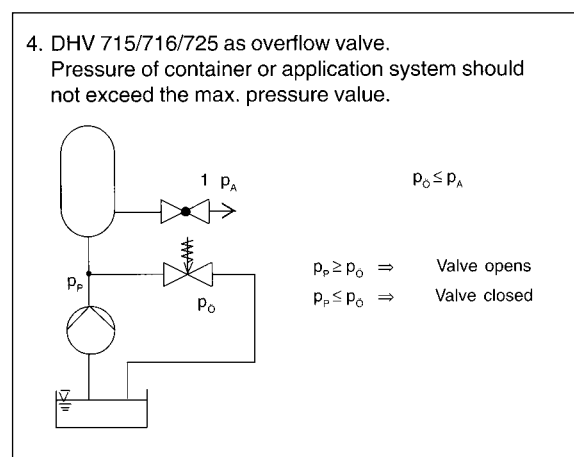
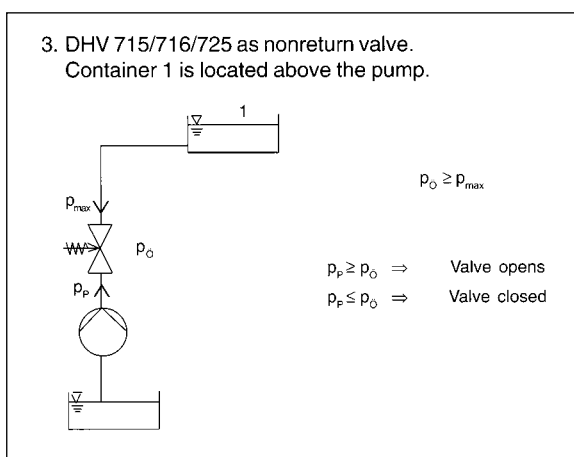
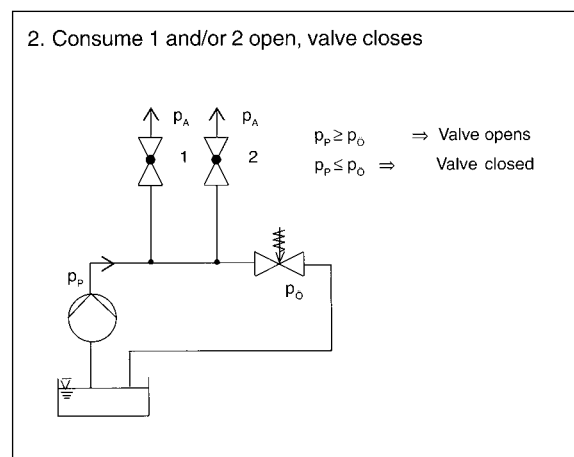
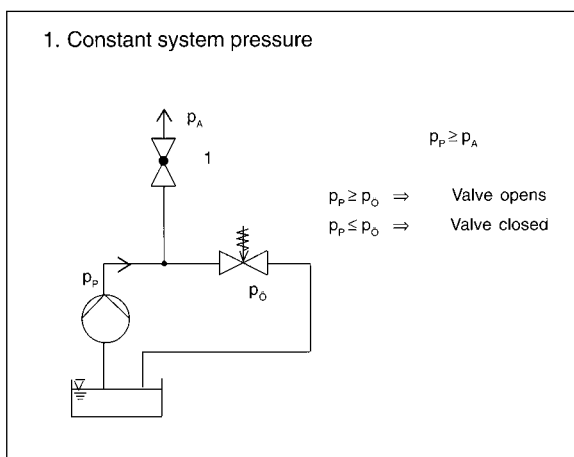
The pre-formed diaphragm allows full opening of the valve whilst separating the fluid in the lower body from the bonnet and therefore the atmosphere. The seal is additionally secured by crimped seal O-rings at the diaphragm.

When the system pressure falls back to below the set pressure, the spring forces the piston back into the seat, closing the valve.

Pre-setting or re-adjustment of the valve set pressure is made by removing the protective cap and by setting the control screw. The counter nut is tightened after final adjustment. When used with neutral fluids, many of the pressure relief valves can be fitted with a pressure gauge if required.



Applications for Pressure Relief Valves



ASV Stubbe Type 725 Pressure Relief Valve

Description: Adjustable pressure relief valve

Mounting: In any position

Maximum Fluid Pressure at 20°C: 10 bar

Pressure Setting Range: 0.2 to 10 bar

Opening Pressure: Approx. 0.2 bar

Hysteresis: Approx. 0.3 bar

Fluid Temperature Range: 0°C-50°C

Construction:

Body: PVC-U

Diaphragm: EPDM with PTFE liner on fluid side

Seats and Seals: EPDM or FPM

End Connections: Union solvent sockets or solvent cement spigots

Features: Adjustable at any time, even during use. Vibration and flutter free during operation. Maintenance free. High reproducibility, low hysteresis.

Options: A pressure gauge can be fitted on the primary or also on the secondary side.



Setting Range - 0.2 to 10 bar

Inch Solvent Cement Unions

EPDM Seals	Size	Part No.	Price
	1/2	1190 85 /1	190.72
	3/4	1190 86 /1	254.32
	1	1190 87 /1	257.84
	1 1/4	1190 88 /1	443.58
	1 1/2	1190 89 /1	451.97
	2	1190 90 /1	459.01

Inch Solvent Cement Unions

FPM Seals	Size	Part No.	Price
	1/2	1190 92 /1	194.96
	3/4	1190 93 /1	262.71
	1	1190 94 /1	266.24
	1 1/4	1190 95 /1	462.54
	1 1/2	1190 96 /1	473.27
	2	1190 97 /1	483.10

MM Solvent Cement Unions

EPDM Seals	Size	Part No.	Price
	16	1190 84	189.25
	20	1190 85	190.72
	25	1190 86	254.32
	32	1190 87	257.84
	40	1190 88	443.58
	50	1190 89	451.97
	63	1190 90	459.01

MM Solvent Cement Unions

FPM Seals	Size	Part No.	Price
	16	1190 91	192.77
	20	1190 92	194.96
	25	1190 93	262.71
	32	1190 94	266.24
	40	1190 95	462.54
	50	1190 96	496.23
	63	1190 97	506.54

MM Solvent Cement Spigots

EPDM Seals	Size	Part No.	Price
	20	1220 07	178.08
	25	1220 08	241.67
	32	1220 09	241.67
	40	1220 10	423.75
	50	1220 11	423.75
	63	1220 12	444.33

MM Solvent Cement Spigots

FPM Seals	Size	Part No.	Price
	16	1220 13	180.28
	20	1220 14	180.28
	25	1220 15	245.21
	32	1220 16	245.21
	40	1220 17	432.25
	50	1220 18	432.25
	63	1220 19	432.25

Don't see what you want?

We have access to a huge range of products that are not featured in our Handbook.

If you don't see what you want, give our team a call:

0800 975 79 71



ASV Stubbe Type 715-SL Pressure Relief Valve

Description: Adjustable pressure relief valve with no metal fixings for aggressive environments

Mounting: In any position

Maximum Fluid Pressure at 20°C: 10 bar

Pressure Setting Range: 0.2 to 4 bar

Hysteresis: Approx. 0.3 bar

Fluid Temperature Range: 0°C-50°C

Construction:

Body: PVC-U

Diaphragm: EPDM with PTFE liner on fluid side

Seats and Seals: EPDM or FPM

End Connections: Union solvent sockets or solvent cement spigots

Features: Body is internally screwed together making this valve suitable for externally corrosive environments. Adjustable at any time, even during use. Vibration and flutter free during operation. Maintenance free. High reproducibility, low hysteresis.

Options: A pressure gauge can be fitted on the primary or also on the secondary side.



Setting Range - 0.2 to 4 bar

Inch Solvent Cement Unions

EPDM Seals			
	1/2	1381 15 /1	158.48
	3/4	1381 16 /1	221.26
	1	1381 17 /1	229.26

Inch Solvent Cement Unions

FPM Seals			
	1/2	1382 67 /1	165.11
	3/4	1382 68 /1	231.35
	1	1382 69 /1	240.57

MM Solvent Cement Unions

EPDM Seals			
	16	1381 14	154.86
	20	1381 15	158.48
	25	1381 16	221.26
	32	1381 17	229.26

MM Solvent Cement Unions

FPM Seals			
	16	1382 66	157.35
	20	1382 67	165.10
	25	1382 68	231.35
	32	1382 69	240.57

MM Solvent Cement Spigots

EPDM Seals			
	16	1381 07	145.63
	20	1381 08	145.63
	25	1381 09	202.42
	32	1381 10	202.42

MM Solvent Cement Spigots

FPM Seals			
	16	1382 70	148.22
	20	1382 71	148.22
	25	1382 72	212.36
	32	1382 73	212.36

ASV Stubbe Type 715 Pressure Relief Valve

Description: Adjustable pressure relief valve

Mounting: In any position

Maximum Fluid Pressure at 20°C: 10 bar

Pressure Setting Range: 0.2 bar to 4 bar

Opening Pressure: Approx. 0.2 bar

Hysteresis: Approx. 0.3 bar

Fluid Temperature Range: 0°C-50°C

Construction:

Body: PVC-U

Diaphragm: EPDM with PTFE liner on fluid side

Seats and Seals: EPDM or FPM

End Connections: Union solvent sockets or solvent cement spigots

Features: Adjustable at any time, even during use. Vibration and flutter free during operation. Maintenance free. High reproducibility, low hysteresis.

Options: A pressure gauge can be fitted on the primary or also on the secondary side.



Setting Range - 0.2 to 4 bar

Inch Solvent Cement Unions

EPDM Seals			
	1/2	1190 01 /1	155.82
	3/4	1190 02 /1	217.53
	1	1190 03 /1	222.49
	1 1/4	1190 04 /1	291.75
	1 1/2	1190 05 /1	301.53
	2	1190 06 /1	311.47

Inch Solvent Cement Unions

FPM Seals			
	1/2	1190 08 /1	162.33
	3/4	1190 09 /1	227.46
	1	1190 10 /1	236.53
	1 1/4	1190 11 /1	313.88
	1 1/2	1190 12 /1	326.22
	2	1190 13 /1	339.43

MM Solvent Cement Unions

EPDM Seals			
	16	1190 00	154.95
	20	1190 01	155.82
	25	1190 02	217.53
	32	1190 03	222.53
	40	1190 04	291.53
	50	1190 05	301.53
	63	1190 06	311.47

MM Solvent Cement Unions

FPM Seals			
	16	1190 07	159.09
	20	1190 08	162.33
	25	1190 09	227.46
	32	1190 10	236.53
	40	1190 11	313.88
	50	1190 12	326.22
	63	1190 13	339.43

ASV Stubbe Type 716-SL Pressure Relief Valve

Description: Adjustable pressure relief valve with no metal fixings for aggressive environments

Mounting: In any position

Maximum Fluid Pressure at 20°C: 10 bar

Pressure Setting Range: 0.5 to 10 bar

Hysteresis: Approx. 0.3 bar

Fluid Temperature Range: 0°C-50°C

Construction:

Body: PVC-U

Diaphragm: EPDM with PTFE liner on fluid side

Seats and Seals: EPDM or FPM

End Connections: Union solvent sockets or solvent cement spigots

Features: Body is internally screwed together making this valve suitable for externally corrosive environments. Adjustable at any time, even during use. Vibration and flutter free during operation. Maintenance free. High reproducibility, low hysteresis.

Options: A pressure gauge can be fitted on the primary or also on the secondary side.



Setting Range - 0.5 to 10 bar

Inch Solvent Cement Unions

EPDM Seals			
	1/2	1381 63 /1	158.49
	3/4	1381 64 /1	221.26
	1	1381 65 /1	226.31

MM Solvent Cement Unions

EPDM Seals			
	16	1381 62	157.60
	20	1381 63	158.48
	25	1381 64	221.26
	32	1381 65	226.31

MM Solvent Cement Spigots

EPDM Seals			
	16	1381 58	145.63
	20	1381 59	145.63
	25	1381 60	208.15
	32	1381 61	208.15

Inch Solvent Cement Unions

FPM Seals			
	1/2	1382 74 /1	165.10
	3/4	1382 75 /1	231.35
	1	1382 76 /1	240.57

MM Solvent Cement Unions

FPM Seals			
	16	1382 74	161.80
	20	1382 75	165.10
	25	1382 76	231.35
	32	1382 77	240.57

MM Solvent Cement Spigots

FPM Seals			
	16	1382 78	148.22
	20	1382 79	148.22
	25	1382 80	212.36
	32	1382 81	212.36

ASV Stubbe Type 716 Pressure Relief Valve

Description: Adjustable pressure relief valve

Mounting: In any position

Maximum Fluid Pressure at 20°C: 10 bar

Pressure Setting Range: 0.5 to 10 bar

Opening Pressure: Approx. 0.4 bar

Hysteresis: Approx. 0.3 bar

Fluid Temperature Range: 0°C-50°C

Construction:

Body: PVC-U **Diaphragm:** EPDM with PTFE liner on fluid side

Seats and Seals: EPDM or FPM

End Connections: Union solvent sockets or solvent cement spigots

Features: Adjustable at any time, even during use. Vibration and flutter free during operation. Maintenance free. High reproducibility, low hysteresis.

Options: A pressure gauge can be fitted on the primary or also on the secondary side.



Setting Range - 0.5 to 10 bar

Inch Solvent Cement Unions

EPDM Seals			
	1/2	1190 43 /1	155.82
	3/4	1190 44 /1	217.53
	1	1190 45 /1	222.49
	1 1/4	1190 46 /1	291.75
	1 1/2	1190 47 /1	301.53
	2	1190 48 /1	311.47

MM Solvent Cement Unions

EPDM Seals			
	16	1190 42	154.95
	20	1190 43	155.82
	25	1190 44	217.53
	32	1190 45	222.49
	40	1190 46	291.75
	50	1190 47	301.53
	63	1190 48	311.47

Inch Solvent Cement Unions

FPM Seals			
	1/2	1190 50/1	162.33
	3/4	1190 51/1	227.46
	1	1190 52/1	236.53
	1 1/4	1190 53/1	313.88
	1 1/2	1190 54/1	326.22
	2	1190 55/1	339.44

MM Solvent Cement Unions

FPM Seals			
	16	1190 49	159.09
	20	1190 50	162.33
	25	1190 51	227.46
	32	1190 52	236.53
	40	1190 53	313.88
	50	1190 54	326.22
	63	1190 55	339.43

ASV Stubbe Type 712-R Pressure Relief and Non-Return Valve

Description: Adjustable pressure relief and overflow valve, back-pressure safe

Mounting: In any position

Maximum Fluid Pressure at 20°C: 10 bar

Pressure Setting Range: 0.3 to 10 bar

Opening Pressure: Approx. 0.5 bar

Hysteresis: Approx. 0.3 bar

Fluid Temperature Range: 0°C-50°C

Construction:

Body: PVC-U

Diaphragm: EPDM with PTFE liner on fluid side

Seats and Seals: EPDM or FPM

End Connections: Union solvent sockets or solvent cement spigots

Features: Unique design: valve acts as a non-return valve if there is no pressure on the inlet side. Adjustable at any time, even during use. Vibration free during operation. Maintenance free. High reproducibility, low hysteresis.

Options: A pressure gauge can be fitted on the primary or also on the secondary side.



Setting Range - 0.3 to 10 bar

Inch Solvent Cement Unions

EPDM Seals	Inch	Part No.	Price
	1/2	1206 61 /1	172.41
	3/4	1206 62 /1	240.65
	1	1206 63 /1	246.47
	1 1/4	1206 64 /1	307.35
	1 1/2	1206 65 /1	317.99
	2	1206 66 /1	328.94

Inch Solvent Cement Unions

FPM Seals	Inch	Part No.	Price
	1/2	1206 68 /1	178.78
	3/4	1206 69 /1	260.51
	1	1206 70 /1	262.73
	1 1/4	1206 71 /1	329.62
	1 1/2	1206 72 /1	342.82
	2	1206 73 /1	356.71

MM Solvent Cement Unions

EPDM Seals	MM	Part No.	Price
	16	1206 60	178.85
	20	1206 61	180.78
	25	1206 62	252.34
	32	1206 63	258.43
	40	1206 64	322.27
	50	1206 65	333.43
	63	1206 66	344.91

MM Solvent Cement Unions

FPM Seals	MM	Part No.	Price
	16	1206 67	183.15
	20	1206 68	187.47
	25	1206 69	260.51
	32	1206 70	262.73
	40	1206 71	329.62
	50	1206 72	342.82
	63	1206 73	356.71

MM Solvent Cement Spigots

EPDM Seals	MM	Part No.	Price
	16	1218 80	156.65
	20	1218 81	156.65
	25	1218 82	224.19
	32	1218 83	224.19
	40	1218 84	283.52
	50	1218 85	283.52
	63	1218 86	283.52

MM Solvent Cement Spigots

FPM Seals	MM	Part No.	Price
	16	1218 87	160.06
	20	1218 88	160.06
	25	1218 89	228.30
	32	1218 90	228.30
	40	1218 91	293.31
	50	1218 92	293.31
	63	1218 93	293.31

ASV Stubbe Type 712 Pressure Relief Valve

Description: Adjustable pressure relief valve
Mounting: In any position
Maximum Fluid Pressure at 20°C: Sizes 75mm & 90mm: 10 bar; 110mm: 6 bar
Pressure Setting Range: Choice of 0.3 to 4 bar, 0.5 to 6 bar or 0.5 to 10 bar
Opening Pressure: Approx. 0.3 to 0.5 bar
Hysteresis: Maximum approx. 1 bar
Fluid Temperature Range: 0°C-50°C
Construction:
Body: PVC-U
Diaphragm: EPDM with PTFE liner on fluid side
Seats and Seals: EPDM or FPM
End Connections: Solvent cement spigots
Features: Adjustable at any time, even during use. Vibration and flutter free during operation. Maintenance free.



Setting Range
0.3 to 4 bar

MM Solvent Cement Spigots

EPDM Seals	75	1105 45	1069.54
	90	1105 48	1693.24
	110	1129 26	2591.01

MM Solvent Cement Spigots

FPM Seals	75	1129 20	1175.88
	90	1129 23	1863.00
	110	1129 29	2848.67

Setting Range
0.5 to 6 bar

MM Solvent Cement Spigots

EPDM Seals	110	1118 56	2591.01
------------	-----	---------	---------

MM Solvent Cement Spigots

FPM Seals	110	1129 32	2848.67
-----------	-----	---------	---------

Setting Range
0.5 to 10 bar

MM Solvent Cement Spigots

EPDM Seals	75	1100 60	1069.54
	90	1100 63	1693.24

MM Solvent Cement Spigots

FPM Seals	75	1129 11	1175.88
	90	1129 14	1863.00

ASV Stubbe Type 718 Pressure Relief Valve

Description: Adjustable pressure relief valve
Mounting: In any position
Maximum Fluid Pressure at 20°C: 10 bar
Pressure Setting Range: 0.5 to 10 bar
Opening Pressure: Approx. 0.5 bar
Hysteresis: Approx. 1 bar
Fluid Temperature Range: 0°C-50°C
Construction:
Body: PVC-U **Diaphragm:** EPDM with PTFE liner on fluid side
End Connections: Solvent weld spigots
Features: Adjustable at any time, even during use. Vibration and flutter free during operation. Maintenance free. High reproducibility, low hysteresis.
Options: A pressure gauge can be fitted on the primary or also on the secondary side.

Setting Range - 0.5 to 10 bar

Ideal for
Oscillating
Pumps



Size 12mm

MM Solvent Cement Unions

EPDM Seals	12	1278 39	137.18
------------	----	---------	--------

MM Solvent Cement Unions

FPM Seals	12	1278 40	141.36
-----------	----	---------	--------

MM Fusion Spigots

FPM Seals	16	1352 69	133.46
	20	1352 70	133.46
	25	1352 71	190.96
	32	1352 72	190.96
	40	1352 73	252.49
	50	1352 74	252.49
	63	1352 75	252.49



Sizes 16-63mm