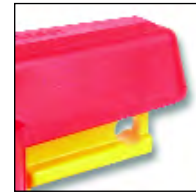


Praher S4 Ball Valve



Lockable Handle



Tagging Point



Valve Bracket



Actuation

Materials

Body - PVCu
 Ball Seat - PTFE
 Seals - EPDM or FPM

Sizes

3/8" - 4"/16mm - 110mm

Pressure Rating

3/8"/16mm to 2.1/2"/75mm - 16 bar
 3"/90mm - 10 bar
 4"/110mm - 6 bar

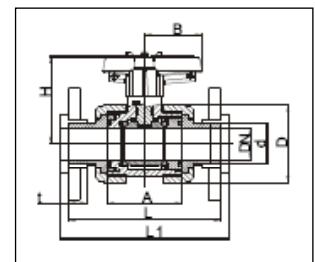
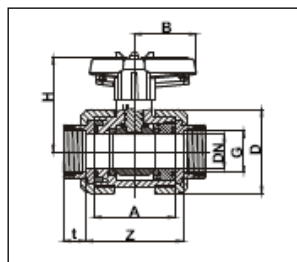
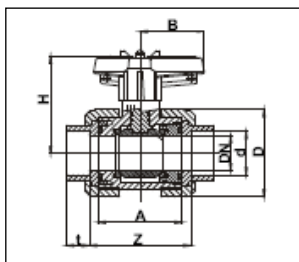
Connections

Solvent Cement Sockets
 Solvent Cement Spigots
 BSP Female Threaded
 Flanged PN10 or ANSI 150
 HDPE Fusion Spigots

Features

- WRAS approved for contact with potable water
- Lockable Handle (Lock not supplied)
- True Union design for easy maintenance
- Full bore design
- Tagging point included
- Matched Valve bracket for panel mounting and retrofit actuation.
- Pneumatically and Electrically actuated versions available - please see pages ??
- Silicone free on request

Valve Dimensions



d	16	20	25	32	40	50	63	75	90	110
DN	10	15	20	25	32	40	50	65	80	80
G	3/8"	1/2"	3/4"	1"	1 1/4"	1 1/2"	2"	2 1/2"	3"	4"
L	114.0	124.0	144.0	154.0	174.0	194.0	224.0	284.0	300.0	340.0
L1	120.0	130.0	150.0	160.0	180.0	200.0	230.0	290.0	310.0	350.0
A	62.0	62.0	70.0	74.0	84.0	95.0	109.0	137.0	163.0	163.0
Z	67.5	67.5	76.0	81.0	90.0	104.0	121.0	148.0	183.0	176.0
t	16.5	16.5	19.5	22.5	26.5	31.5	38.5	45.0	55.5	64.0
D	53.0	53.0	63.0	70.0	85.0	101.0	121.5	155.0	188.0	188.0
H	72.0	72.0	78.5	81.5	100.0	107.5	116.5	144.0	163.0	163.0
B	40.0	40.0	51.5	51.5	64.0	73.0	85.0	110.0	132.0	132.0
PN	16	16	16	16	16	16	16	16	10	6
Weight	0.22	0.22	0.33	0.41	0.65	1.03	1.55	3.24	5.44	5.44

Dimensions in mm



Praher Type S4 Ball Valve

Description: In-line double union ball valve with lockable handle

Mounting: In any position

Maximum Fluid Pressure at 20°C: Sizes 3/8"/16mm to 2 1/2"/75mm - 16 bar;
3"/90mm - 10 bar; 4"/100mm - 6 bar

Fluid Temperature Range: 0°C - 60°C

Construction:

Body: PVC-U

Seals: EPDM or FPM

Seats: PTFE

End Connections: Solvent Sockets, Solvent Spigots, BSP Female Threaded, HDPE Fusion Spigots, Flanged PN10 or ANSI 150

Option: Silicon-free

Features: Lockable handle and tagging point included



Inch Solvent Cement Sockets

EPDM Seals	3/8	12.1939	32.47
	1/2	12.1760	34.15
PTFE Seals	3/4	12.2073	40.29
	1	12.2069	50.11
	1 1/4	12.2077	64.33
	1 1/2	12.1107	76.44
	2	12.1108	92.21
	2 1/2	12.1128	187.63
	3	12.0362	230.51
	4	12.2143	313.98

BSP Threaded Sockets

EPDM Seals	3/8	12.1132	35.70
	1/2	12.1134	37.22
PTFE Seals	3/4	12.1136	44.42
	1	12.1138	54.99
	1 1/4	12.1140	70.15
	1 1/2	12.1142	83.78
	2	12.1144	101.88
	2 1/2	12.1146	176.13
	3	12.1148	256.56

MM Solvent Cement Sockets

EPDM Seals	16	12.1116	32.47
	20	12.1118	34.15
PTFE Seals	25	12.1120	40.29
	32	12.1122	50.11
	40	12.1124	64.33
	50	12.1048	76.44
	63	12.1049	92.21
	75	12.1128	187.63
	90	12.1130	230.51
	110	12.1746	313.98

Flanged PN10 *

EPDM Seals	1/2	12.1760NP	64.73
	3/4	12.2073NP	61.00
PTFE Seals	1	12.2069NP	84.39
	1 1/4	12.2077NP	104.68
	1 1/2	12.1107NP	123.96
	2	12.1108NP	153.49
	2 1/2	12.1128NP	282.02
	3	12.0362NP	374.51
	4	12.2143NP	478.55

HDPE Fusion Spigots

EPDM Seals	16	12.5357	35.36
	20	12.5358	37.24
PTFE Seals	25	12.5359	45.45
	32	12.5360	58.09
	40	12.5361	76.40
	50	12.5362	90.29
	63	12.5363	101.03
	75	12.5364	227.94
	90	12.5365	280.97
	110	12.5366	381.37

Inch Solvent Cement Sockets

FPM Seals	3/8	12.1479	38.75
	1/2	12.1480	40.29
PTFE Seals	3/4	12.2148	47.94
	1	12.2149	59.42
	1 1/4	12.2150	75.05
	1 1/2	12.0302	88.68
	2	12.0300	106.15
	2 1/2	12.1129	215.19
	3	12.1490	271.87
	4	12.2792	359.18

BSP Threaded Sockets

FPM Seals	3/8	12.1133	42.11
	1/2	12.1135	43.65
PTFE Seals	3/4	12.1137	52.24
	1	12.1139	64.33
	1 1/4	12.1141	81.19
	1 1/2	12.1143	96.50
	2	12.1145	116.25
	2 1/2	12.1147	232.81
	3	12.1149	299.43

MM Solvent Cement Sockets

FPM Seals	16	12.1117	38.75
	20	12.1119	40.29
PTFE Seals	25	12.1121	47.94
	32	12.1123	59.42
	40	12.1125	75.05
	50	12.1126	88.68
	63	12.1127	106.15
	75	12.1129	215.19
	90	12.1131	271.87
	110	12.1747	359.18

Flanged PN10 *

FPM Seals	1/2	12.1480NP	70.88
	3/4	12.2148NP	79.26
PTFE Seals	1	12.2149NP	93.73
	1 1/4	12.2150NP	115.40
	1 1/2	12.0302NP	136.22
	2	12.0300NP	167.40
	2 1/2	12.1129NP	309.60
	3	12.1490NP	415.86
	4	12.2792NP	523.74

HDPE Fusion Spigots

FPM Seals	16	12.6213	41.28
	20	12.6214	43.20
PTFE Seals	25	12.6215	53.04
	32	12.6216	67.06
	40	12.6217	86.89
	50	12.6218	102.29
	63	12.6219	114.66
	75	12.6220	292.98
	90	12.6221	321.40
	110	12.6222	425.58

* ANSI 150 Flanges on request

Praher Type S4 Ball Valve with Actuator Adaptor Kit



Includes:
PVC-U Ball Valve,
PVC-U Valve Bracket,
Console, Actuator
Adaptor, Screw Set,
PVDF Shaft

EPDM Seals

Size	Code	Price
3/8"	122.171	103.86
1/2"	122.172	105.76
3/4"	122.173	115.09
1"	122.174	128.54
1 1/4"	122.175	169.43
1 1/2"	122.176	186.25
2"	122.177	206.70
2 1/2"	122.359	346.91
3"	122.761	405.34
4"	122.762	493.72
16	122.357	103.86
20	122.358	105.76
25	122.256	115.09
32	122.238	128.54
40	122.237	169.43
50	122.257	186.25
63	122.898	206.70
75	122.359	346.91
90	122.258	405.34
110	122.360	493.72



FPM Seals

Size	Code	Price
3/8"	120.832	125.60
1/2"	120.833	126.21
3/4"	120.834	135.55
1"	120.835	148.99
1 1/4"	120.836	193.56
1 1/2"	120.837	210.36
2"	120.838	235.20
2 1/2"	120.839	395.85
3"	120.840	480.58
4"	120.841	568.96
16	125.449	125.60
20	125.450	126.21
25	125.451	135.55
32	122.804	148.99
40	125.235	193.56
50	125.452	210.36
63	125.453	235.20
75	125.381	395.85
90	122.263	480.58
110	on application	

Prices on request for BSP threaded sockets or PN10 flanged connections

Valve Bracket for Type S4 Ball Valve



Includes:
PVC-U Valve Bracket,
Screws and Nuts
Note: Valve not included

Size	Code	Price
3/8"/16	170.276	23.44
1/2"/20	170.276	23.44
3/4"/25	170.277	24.97
1"/32	170.278	26.50
1 1/4"/40	170.229	28.19
1 1/2"/50	170.231	29.88
2"/63	170.233	31.55
2 1/2"/75	170.266	45.80
3"/90	170.267	51.16
4"/110	170.267	51.16

Praher Type S4 Actuator Adaptor Kit



For Pneumatic Actuator

EPDM Seals

Size	Code	Price
3/8"/16	122.103	39.37
1/2"/20	122.103	39.37
3/4"/25	122.083	39.37
1"/32	122.083	39.37
1 1/4"/40	121.985	50.38
1 1/2"/50	121.986	50.38
2"/63	121.986	50.38
2 1/2"/75	122.052	57.60
3"/90	122.065	57.61
4"/110	122.065	57.61

Stem Extension Kit for Praher S4 Ball Valve NEW



Includes:
200mm pipe

Size	Code	Price
3/8 & 1/2"/16 & 20	125424	18.62
3/4 & 1"/25 & 32	125425	19.30
1 1/4"/40	125426	20.22
1 1/2 & 2"/50 & 63	125427	21.83
2 1/2"/75	125428	33.39
3"/90	125429	33.39

Please note: Valve not included



Spears True Union 2000 Industrial Ball Valve

Description: In-line double union ball valve with lockable handle

Mounting: In any position

Maximum Fluid Pressure at 20°C: Sizes 1/2" to 2" - 16 bar; sizes 2 1/2" to 6" - 10 bar

All sizes flanged - 10 bar

Fluid Temperature Range: 0°C - 60°C

Construction:

Body: PVC-U

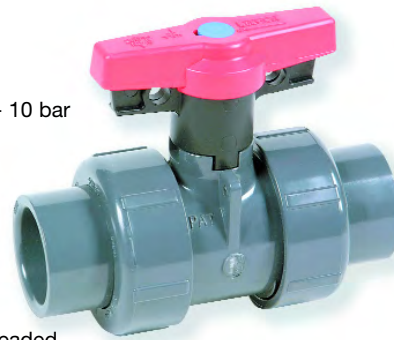
Seals: EPDM or FPM

Seats: PTFE

End Connections: Solvent Sockets, Solvent Spigots, NPT Female Threaded, Reinforced NPT Female Threaded, Flanged

Features: Sizes 1/2" to 2" Solvent Socket valves also include NPT Female Threaded end connections. All valves are assembled with silicon-free, water soluble lubricant

Option: T-Handle operation on 6" valve



Inch Solvent Cement Sockets

EPDM Seals PTFE Seats	1/2	1829- 005	37.68
	3/4	1829- 007	44.57
	1	1829- 010	53.00
	1 1/4	1829- 012	73.21
	1 1/2	1829- 015	88.22
	2	1829- 020	116.40
	2 1/2	1822- 025	224.39
	3	1822- 030	295.59
	4	1822- 040	498.58
	6	1822- 060	1637.29
	6*	18226- 60	1637.29

*T-Handle operation

Inch Solvent Cement Sockets

FPM Seals PTFE Seats	1/2	1839- 005	41.83
	3/4	1839- 007	49.48
	1	1839- 010	58.97
	1 1/4	1839- 012	93.59
	1 1/2	1839- 015	98.01
	2	1839- 020	128.21
	2 1/2	1832- 025	303.24
	3	1832- 030	327.76
	4	1832- 040	553.68
	6	1832- 060	1816.47
	6*	18326- 60	1816.47

*T-Handle operation

Inch Solvent Cement Spigots

EPDM Seals PTFE Seats	1/2	1827- 005	37.68
	3/4	1827- 007	44.57
	1	1827- 010	53.00
	1 1/4	1827- 012	73.21
	1 1/2	1827- 015	88.22
	2	1827- 020	116.40
	2 1/2	1827- 025	224.39
	3	1827- 030	395.59
	4	1827- 040	498.54
	6	1827- 060	1637.29
	6*	18276- 60	1652.88

*T-Handle operation

Inch Solvent Cement Spigots

FPM Seals PTFE Seats	1/2	1837- 005	41.83
	3/4	1837- 007	49.48
	1	1837- 010	58.97
	1 1/4	1837- 012	93.59
	1 1/2	1837- 015	98.01
	2	1837- 020	128.21
	2 1/2	1837- 025	303.24
	3	1837- 030	327.76
	4	1837- 040	553.68
	6	1837- 060	1816.47
	6*	18376- 60	1816.47

*T-Handle operation

Flanged ANSI 150

EPDM Seals PTFE Seats	1/2	1823- 005	53.77
	3/4	1823- 007	68.17
	1	1823- 010	82.39
	1 1/4	1823- 012	96.80
	1 1/2	1823- 015	121.93
	2	1823- 020	194.51
	2 1/2	1823- 025	358.40
	3	1823- 030	395.93
	4	1823- 040	796.42
	6	1823- 060	2576.14
	6*	18236- 60	2576.14

*T-Handle operation

Flanged ANSI 150

FPM Seals PTFE Seats	1/2	1833- 005	57.44
	3/4	1833- 007	74.13
	1	1833- 010	88.68
	1 1/4	1833- 012	107.53
	1 1/2	1833- 015	132.64
	2	1833- 020	206.00
	2 1/2	1833- 025	364.52
	3	1833- 030	491.64
	4	1833- 040	923.56
	6	1833- 060	2988.14
	6*	18336- 60	2988.14

*T-Handle operation



Silicon Free

All Spears valves are assembled with a water soluble lubricant and are 'silicon free.'

Spears True Union 2000 Industrial Vented Ball Valve

Description: In-line double union ball valve
Mounting: In any position
Maximum Fluid Pressure at 20°C: Sizes 1/2" to 2" - 16 bar; sizes 2 1/2" to 4" - 10 bar. All sizes flanged - 10 bar
Fluid Temperature Range: 0°C-60°C
Construction:
Body: PVC-U
Seals: EPDM or FPM
Seats: PTFE
End Connections: Solvent Sockets, Solvent Spigots, Reinforced NPT Female Threaded, Flanged
Features: Designed for Sodium Hypochlorite and other chemical applications
 Vented ball equalises internal fluid pressure assuring proper valve operation and long life



Inch Solvent Cement Sockets

Seals	Valve Size	Part Number	Price
EPDM Seals	1/2	1829V- 005	44.33
PTFE Seals	3/4	1829V- 007	52.47
	1	1829V- 010	62.50
	1 1/4	1829V- 012	86.45
	1 1/2	1829V- 015	104.15
	2	1829V- 020	137.42
	2 1/2	1822V- 025	264.14
	3	1822V- 030	348.26
	4	1822V- 040	588.42
	6	1822V- 060	1271.08

Inch Solvent Cement Sockets

Seals	Valve Size	Part Number	Price
FPM Seals	1/2	1839V- 005	49.36
PTFE Seals	3/4	1839V- 007	58.36
	1	1839V- 010	69.61
	1 1/4	1839V- 012	110.36
	1 1/2	1839V- 015	115.60
	2	1839V- 020	151.58
	2 1/2	1832V- 025	357.90
	3	1832V- 030	386.95
	4	1832V- 040	653.78
	6	1832V- 060	1498.70

NPT Female Threaded

Stainless Steel Reinforced

Seals	Valve Size	Part Number	Price
EPDM Seals	1/2	1821V- 005SR	45.30
PTFE Seals	3/4	1821V- 007SR	54.75
	1	1821V- 010SR	64.80
	1 1/4	1821V- 012SR	93.34
	1 1/2	1821V- 015SR	111.54
	2	1821V- 020SR	145.43
	2 1/2	1821V- 025SR	285.73
	3	1821V- 030SR	369.86
	4	1821V- 040SR	613.61

NPT Female Threaded

Stainless Steel Reinforced

Seals	Valve Size	Part Number	Price
FPM Seals	1/2	1831V- 005 SR	50.31
PTFE Seals	3/4	1831V- 007 SR	60.70
	1	1831V- 010 SR	71.92
	1 1/4	1831V- 012 SR	117.25
	1 1/2	1831V- 015 SR	123.02
	2	1831V- 020 SR	159.18
	2 1/2	1831V- 025 SR	379.48
	3	1831V- 030 SR	408.53
	4	1831V- 040 SR	678.98

Spears Valve Bracket

Includes: Polypropylene Valve Bracket, Screws and Nuts.
 Suitable for use on Spears True Union 2000 Ball Valve



Valve Size	Part Number	Price
1/2"/20mm	TUMB2-005	40.45
3/4"/25mm	TUMB2-007	42.89
1"/32mm	TUMB2-010	46.12
1 1/4"/40mm	TUMB2-012	48.25
1 1/2"/50mm	TUMB2-015	52.08
2"/63mm	TUMB2-020	58.05
3"/90mm	TUMB2-030	110.12
4"/110mm	TUMB2-040	134.63

Spears Actuator Mounting Platform

Includes: Polypropylene Mounting Platform, Screws and Nuts.
 Suitable for use with Spears True Union 2000 Ball Valve



Valve Size	Part Number	Price
1/2"/20mm	MMP1-005	17.15
3/4"/25mm	MMP1-007	17.77
1"/32mm	MMP1-010	20.68
1 1/4"/40mm	MMP1-012	22.66
1 1/2"/50mm	MMP1-015	30.93
2"/63mm	MMP1-020	34.93
3"/90mm	MMP1-030	78.73
4"/110mm	MMP1-040	90.66

Spears Ball Valve Stem Extension Kit



Valve Size	True Union 2000 Ball Valves	Single Union & Compact Ball Valves*	Price
1/2	BVSE2-005-000	BVSE-005-000	9.26
3/4	BVSE2-007-000	BVSE-007-000	10.26
1	BVSE2-010-000	BVSE-010-000	10.26
1 1/4	BVSE2-012-000	BVSE-012-000	16.71
1 1/2	BVSE2-015-000	BVSE-015-000	18.98
2	BVSE2-020-000	BVSE-020-000	20.52
2 1/2 & 3	BVSE2-030-000	BVSE-030-000	20.99
4	BVSE2-040-000	BVSE-040-000	28.79

Does not include extension pipe. * Also Spears True Union Ball Valve (old style)



Spears True Union 2000 Standard Ball Valve

Description: In-line double union ball valve

Mounting: In any position

Maximum Fluid Pressure at 20°C: Sizes 1/2" to 2" - 16 bar;
sizes 2 1/2" to 4" - 10 bar. All sizes flanged - 10 bar

Fluid Temperature Range: 0°C - 60°C

Construction:

Body: PVC-U

Seals: EPDM or FPM

Seats: PTFE

End Connections: Solvent Sockets, Solvent Spigots,
NPT Female Threaded, Reinforced NPT Female Threaded, Flanged

Features: Sizes 1/2" to 2" Solvent Socket valves also include NPT Female Threaded end connections



Inch Solvent Cement Sockets

EPDM Seals
PTFE/HDPE Seats

1/2	3629- 005	30.20
3/4	3629- 007	35.70
1	3629- 010	42.44
1 1/4	3629- 012	58.67
1 1/2	3629- 015	70.61
2	3629- 020	93.13
2 1/2	3622- 025	178.45
3	3622- 030	236.63
4	3622- 040	398.97

Inch Solvent Cement Sockets

FPM Seals
PTFE/HDPE Seats

1/2	3639- 005	33.56
3/4	3639- 007	39.68
1	3639- 010	47.18
1 1/4	3639- 012	74.91
1 1/2	3639- 015	78.41
2	3639- 020	102.62
2 1/2	3632- 025	242.76
3	3632- 030	262.68
4	3632- 040	443.41

Inch Solvent Cement Spigots

EPDM Seals
PTFE/HDPE Seats

1/2	3627- 005	30.20
3/4	3627- 007	35.70
1	3627- 010	42.44
1 1/4	3627- 012	58.67
1 1/2	3627- 015	70.61
2	3627- 020	93.13
2 1/2	3627- 025	178.45
3	3627- 030	236.63
4	3627- 040	398.97

Inch Solvent Cement Spigots

FPM Seals
PTFE/HDPE Seats

1/2	3637- 005	33.56
3/4	3637- 007	39.68
1	3637- 010	47.18
1 1/4	3637- 012	74.91
1 1/2	3637- 015	78.41
2	3637- 020	102.62
2 1/2	3637- 025	242.76
3	3637- 030	262.68
4	3637- 040	443.41

Flanged ANSI 150

EPDM Seals
PTFE/HDPE Seats

1/2	3623- 005	43.04
3/4	3623- 007	54.52
1	3623- 010	66.02
1 1/4	3623- 012	77.50
1 1/2	3623- 015	97.56
2	3623- 020	155.47
2 1/2	3623- 025	287.19
3	3623- 030	297.14
4	3623- 040	637.12

Flanged ANSI 150

FPM Seals
PTFE/HDPE Seats

1/2	3633- 005	45.94
3/4	3633- 007	59.26
1	3633- 010	70.92
1 1/4	3633- 012	86.07
1 1/2	3633- 015	106.15
2	3633- 020	164.65
2 1/2	3633- 025	291.78
3	3633- 030	393.62
4	3633- 040	738.23

Spears Single Union Ball Valve

Description: In-line ball valve with one union connection

Mounting: In any position

Maximum Fluid Pressure at 20°C: Sizes 1/2" - 2" 16 bar; sizes 3" - 4" - 10 bar

Fluid Temperature Range: 0°C - 60°C

Construction:

Body: PVC-U (Also available in white PVC-U)

Seals: EPDM or FPM

Seats: PTFE

End Connections: Solvent Sockets, NPT Female Threaded



Inch Solvent Cement Sockets

EPDM Seals PTFE Seats	1/2	2422-005G	18.98
	3/4	2422-007G	23.89
	1	2422-010G	28.19
	1 1/4	2422-012G	39.07
	1 1/2	2422-015G	39.07
	2	2422-020G	56.98
	3	2422-030G	221.33
	4	2422-040G	415.06

Inch Solvent Cement Sockets

FPM Seals PTFE Seats	1/2	2432-005G	21.15
	3/4	2432-007G	26.64
	1	2432-010G	31.24
	1 1/4	2432-012G	43.36
	1 1/2	2432-015G	43.36
	2	2432-020G	63.26
	3	2432-030G	255.03
	4	2432-040G	451.83

Spears Compact Ball Valve

Description: In-line ball valve

Mounting: In any position

Maximum Fluid Pressure at 20°C: Sizes 1/2" to 2" - 16 bar; sizes 3" to 6" - 10 bar

Fluid Temperature Range: 0°C-60°C

Construction:

Body: PVC-U

Seals: EPDM or FPM

Seats: PTFE

End Connections: Solvent Sockets, NPT Female Threaded, Flanged ANSI 150



Inch Solvent Cement Sockets

EPDM Seals PTFE Seats	1/2	2122-005	18.23
	3/4	2122-007	24.97
	1	2122-010	27.11
	1 1/4	2122-012	48.71
	1 1/2	2122-015	48.71
	2	2122-020	64.94
	3	2122-030	211.36
	4	2122-040	324.70
	6	2122-060	421.18

Inch Solvent Cement Sockets

FPM Seals PTFE Seats	1/2	2132-005	20.52
	3/4	2132-007	25.42
	1	2132-010	30.48
	1 1/4	2132-012	54.08
	1 1/2	2132-015	54.08
	2	2132-020	72.92
	3	2132-030	236.63
	4	2132-040	467.14
	6	2132-060	605.75

NPT Female Threaded Sockets

EPDM Seals PTFE Seats	1/2	2121-005	18.23
	3/4	2121-007	24.97
	1	2121-010	27.11
	1 1/4	2121-012	48.71
	1 1/2	2121-015	48.71
	2	2121-020	64.94
	3	2121-030	211.36
	4	2121-040	324.70

NPT Female Threaded Sockets

FPM Seals PTFE Seats	1/2	2131-005	20.52
	3/4	2131-007	25.42
	1	2131-010	30.48
	1 1/4	2131-012	54.08
	1 1/2	2131-015	54.08
	2	2131-020	72.92
	3	2131-030	236.63
	4	2131-040	467.14

Asahi Type 21 Industrial Ball Valve

Description: In-line double union ball valve

Mounting: In any position

Maximum Fluid Pressure at 20°C: Sizes 1/2" to 3" - 16 bar; sizes 4" to 6" - 10 bar

All sizes flanged - 10 bar

Fluid Temperature Range: 0°C - 60°C

Construction:

Body: PVC-U

Seals: EPDM or FPM

Seats: PTFE

End Connections: Solvent Sockets, Solvent Spigots, NPT Female Threaded, Flanged

Features: Sizes 1/2" to 2" Solvent Socket valves also include NPT Female Threaded end connections. Integrally moulded ISO mounting pad and panel mounting pad.

Options: Locking and/or spring return handle; limit switches



Inch Solvent Cement Sockets

EPDM Seals PTFE Seals	1/2	1601- 005	40.88
	3/4	1601- 007	50.17
	1	1601- 010	57.61
	1 1/4	1601- 012	77.12
	1 1/2	1601- 015	95.70
	2	1601- 020	128.22
	2 1/2	1602- 025	282.46
	3	1602- 030	289.89
	4	1602- 040	511.95
	6*	1602- 060	1249.69

* 4" valve venturied to 6"

Inch Solvent Cement Sockets

FPM Seals PTFE Seals	1/2	1605- 005	45.53
	3/4	1605- 007	54.81
	1	1605- 010	65.96
	1 1/4	1605- 012	88.28
	1 1/2	1605- 015	107.78
	2	1605- 020	141.22
	2 1/2	1606- 025	332.63
	3	1606- 030	341.92
	4	1606- 040	579.79
	6*	1606- 060	1356.54

* 4" valve venturied to 6"

NPT Female Threaded

EPDM Seals PTFE Seals	1/2	1601- 005	40.88
	3/4	1601- 007	50.17
	1	1601- 010	57.61
	1 1/4	1601- 012	77.12
	1 1/2	1601- 015	95.70
	2	1601- 020	128.46
	2 1/2	1603- 025	282.46
	3	1603- 030	289.89
	4	1603- 040	511.95
	6*	1603- 060	1249.69

* 4" valve venturied to 6"

NPT Female Threaded

FPM Seals PTFE Seals	1/2	1605- 005	45.53
	3/4	1605- 007	54.81
	1	1605- 010	65.96
	1 1/4	1605- 012	88.28
	1 1/2	1605- 015	107.78
	2	1605- 020	141.22
	2 1/2	1607- 025	332.63
	3	1607- 030	341.92
	4	1607- 040	579.79
	6*	1607- 060	1356.54

* 4" valve venturied to 6"

Flanged ANSI 150

EPDM Seals PTFE Seals	1/2	1604- 005	127.07
	3/4	1604- 007	142.24
	1	1604- 010	185.86
	1 1/4	1604- 012	303.45
	1 1/2	1604- 015	348.97
	2	1604- 020	500.69
	2 1/2	1604- 025	665.69
	3	1604- 030	900.86
	4	1604- 040	1490.69
	6*	1604- 060	2169.66

* 4" valve venturied to 6"

Flanged ANSI 150

FPM Seals PTFE Seals	1/2	1608- 005	146.04
	3/4	1608- 007	157.41
	1	1608- 010	210.52
	1 1/4	1608- 012	343.27
	1 1/2	1608- 015	371.72
	2	1608- 020	521.55
	2 1/2	1608- 025	798.45
	3	1608- 030	1003.28
	4	1608- 040	1615.86
	6*	1608- 060	2292.94

* 4" valve venturied to 6"

economy ball valves

NEW

Praher Type S6 Ball Valve

Description: In-line double union ball valve for water or weak chemicals

Mounting: In any position

Maximum Fluid Pressure at 20°C: 16 bar

Fluid Temperature Range: 0°C-60°C

Construction:

Body: PVC-U

Seals: EPDM or FPM

Seats: HDPE or PTFE

End Connections: Solvent Sockets, Solvent Spigots, BSP Female Threaded, HDPE Fusion Spigots



HDPE Seats

Inch Solvent Cement Sockets

EPDM Seats HDPE Seats	3/8"	128.231	15.61
	1/2"	128.232	15.61
	3/4"	128.233	16.71
	1"	128.234	24.67
	1 1/4"	128.235	26.64
	1 1/2"	125.472	36.00
	2"	125.473	45.35
	2 1/2"	129.007	138.00
	*3"	122.886	183.03

MM Solvent Cement Sockets

EPDM Seats HDPE Seats	16	127.696	15.61
	20	127.697	15.61
	25	127.698	16.71
	32	127.699	24.67
	40	127.700	26.64
	50	125.462	36.00
	63	125.463	45.35
	75	128.400	138.00
	*90	128.428	183.03

BSP Threaded Sockets

EPDM Seats HDPE Seats	3/8"	127.701	18.06
	1/2"	127.702	18.06
	3/4"	127.703	20.07
	1"	127.704	28.96
	1 1/4"	127.705	31.86
	1 1/2"	125.466	39.07
	2"	125.467	51.93
	2 1/2"	129.027	155.47
	*3"	120.264	208.29

* Type S5 - Maximum operating pressure 6 bar

PTFE Seats

Inch Solvent Cement Sockets

EPDM Seats PTFE Seats	3/8"	128.236	21.60
	1/2"	128.237	21.60
	3/4"	128.238	24.36
	1"	128.239	26.04
	1 1/4"	128.240	35.38
	1 1/2"	125.496	44.57
	2"	125.497	60.35
	2 1/2"	129.009	145.19
	*3"	120.000	195.28

MM Solvent Cement Sockets

EPDM Seats PTFE Seats	16	126.965	21.60
	20	126.974	21.60
	25	126.975	24.36
	32	126.976	26.04
	40	126.985	35.38
	50	125.486	44.57
	63	125.487	60.35
	75	128.401	145.19
	*90	128.429	195.28

BSP Threaded Sockets

EPDM Seats PTFE Seats	3/8"	127.667	23.89
	1/2"	127.668	23.89
	3/4"	127.669	28.05
	1"	127.670	30.32
	1 1/4"	127.671	40.59
	1 1/2"	125.490	50.23
	2"	125.491	67.39
	2 1/2"	129.029	162.34
	*3"	120.263	221.33

Please note:
The Praher Type S6 ball valve is replacing the Praher Type S5 ball valve, which will be discontinued when existing stocks are exhausted. Please check for current availability.

Spears Utility Ball Valve

Description: In-line ball valve

Mounting: In any position

Maximum Fluid Pressure at 20°C: 10 bar

Fluid Temperature Range: 0°C-60°C

Construction:

Body: PVC-U (also available in white PVC-U)

Seals: EPDM

Seats: PTFE

End Connections: Solvent Sockets, NPT Female Threaded



NPT Threaded Sockets

EPDM Seats	1/2	2621-005G	8.50
	3/4	2621-007G	10.09
	1	2621-010G	13.72
	1 1/4	2621-012G	18.23
	1 1/2	2621-015G	27.73
	2	2621-020G	35.08

Inch Solvent Sockets

EPDM Seats	1/2	2622-005G	8.50
	3/4	2622-007G	10.09
	1	2622-010G	13.72
	1 1/4	2622-012G	18.23
	1 1/2	2622-015G	27.73
	2	2622-020G	35.08

economy ball valves

Economy Ball Valve

Description: In-line double union ball valve for water or weak chemicals

Mounting: In any position

Maximum Fluid Pressure at 20°C: Sizes up to 2"/63mm - 16 bar; 2 1/2"/75mm to 140mm - 10 bar

Fluid Temperature Range: 0°C-60°C

Construction:

Body: PVC-U

Seals: EPDM

Seats: HDPE or PTFE

End Connections: Solvent Sockets, BSP Female Threaded, HDPE Fusion Spigots, HDPE Compression Couplings, Flanged PN10



Inch Solvent Cement Sockets

EPDM Seals	1/2"	110-005	9.72
HDPE Seals	3/4"	110-007	11.53
	1"	110-010	16.68
	1 1/4"	110-012	18.10
	1 1/2"	110-015	25.40
	2"	110-020	37.68
	2 1/2"*	110-292	67.74
	3"*	110-339	174.29
	4"*	110-422	225.84

* Reduced nominal diameter

Also available with metric sockets add suffix M to part number

BSP Threaded Sockets

EPDM Seals	1/2"	110-005B	10.19
HDPE Seals	3/4"	110-007B	12.08
	1"	110-010B	17.48
	1 1/4"	110-012B	18.96
	1 1/2"	110-015B	26.61
	2"	110-020B	39.49
	2 1/2"	110-025B	168.72
	3"	110-030B	228.98
	4"	110-040B	348.34

MM HDPE Fusion Spigots

EPDM Seals	20	110-005F	11.78
HDPE Seals	25	110-007F	14.12
	32	110-010F	21.24
	40	110-012F	23.66
	50	110-015F	31.57
	63	110-020F	46.03
	75	110-025F	163.81
	90	110-030F	225.54
	110	110-040F	327.26

Inch Solvent Cement Sockets

EPDM Seals	1/2"	111-005	11.16
PTFE Seals	3/4"	111-007	13.26
	1"	111-010	19.18
	1 1/4"	111-012	20.80
	1 1/2"	111-015	29.17
	2"	111-020	43.35
	2 1/2"*	111-292	74.55
	3"*	111-339	183.00
	4"*	111-422	237.20

* Reduced nominal diameter

Also available with metric sockets add suffix M to part number

BSP Threaded Sockets

EPDM Seals	1/2"	111-005B	11.70
PTFE Seals	3/4"	111-007B	13.89
	1"	111-010B	20.09
	1 1/4"	111-012B	21.79
	1 1/2"	111-015B	30.56
	2"	111-020B	45.42
	2 1/2"	111-025B	177.14
	3"	111-030B	240.40
	4"	111-040B	364.19

MM HDPE Fusion Spigots

EPDM Seals	20	111-005F	13.54
PTFE Seals	25	111-007F	16.25
	32	111-010F	24.43
	40	111-012F	27.21
	50	111-015F	36.26
	63	111-020F	53.01
	75	111-025F	169.23
	90	111-030F	234.01
	110	111-040F	327.58

Economy Ball Valve White



Inch Solvent Cement Sockets

EPDM Seals	1 1/2"	111018	36.00
HDPE Seals	2"	111019	45.35

ASV Stubbe Compact 16 Ball Valve

Description: In-line one-piece ball valve
Mounting: In any position
Maximum Fluid Pressure at 20°C: Sizes 20 to 110 - 10 bar; sizes 140 to 160 - 6 bar.
Fluid Temperature Range: 0°C-60°C
Construction:
Body: PVC-U
Ball: PE
Seals: EPDM or FPM
Seats: CSM or PTFE
End Connections: PP reinforced flanges BS4504 EN1072 PN10
Features: Low maintenance, compact style. Full bore in all sizes.



Flanged PN10

	Size	Code	Price
EPDM Seals	63/2	51 623	243.97
CSM Seats	75/2 1/4	51 624	370.41
	90/3	51 625	469.91
	110/4	51 626	598.91
	140/5	51 627	737.70
	160/6*	51 854	935.26

* FPM Seals only

ASV Stubbe ProfiDos 101 Dosing Ball Valve

Description: In-line double union ball valve with flow indicator
Mounting: In any position
Maximum Fluid Pressure at 20°C: 16 bar
Fluid Temperature Range: 0°C-60°C
Construction:
Body: PVC-U
Seals: EPDM or FPM
Seats: PTFE
End Connections: Solvent Sockets
Features: Accurate flow control with visible indicator



MM Solvent Cement Unions

	Size	Code	Price
EPDM Seals	20	132 661	67.09
PTFE Seats	25	132 662	77.61
	32	132 663	87.52
	40	132 664	93.35

Inch Solvent Cement Unions

	Size	Code	Price
EPDM Seals	1/2	132 661-1	67.09
PTFE Seats	3/4	132 662-1	77.61
	1	132 663-1	87.52
	1 1/4	132 664-1	93.35

MM Solvent Cement Unions

	Size	Code	Price
FPM Seals	20	132 673	71.18
PTFE Seats	25	132 674	84.16
	32	132 675	88.79
	40	132 676	96.16

Inch Solvent Cement Unions

	Size	Code	Price
FPM Seals	1/2	132 673-1	71.18
PTFE Seats	3/4	132 674-1	84.16
	1	132 675-1	88.79
	1 1/4	132 676-1	96.16

Praher Laboratory Ball Valve

Description: In-line ball valve with accessories
Mounting: In any position
Maximum Fluid Pressure at 20°C: 10 bar
Fluid Temperature Range: 0°C-60°C
Construction:
Body: PVC-U
Seals: EPDM or FPM
Seats: PTFE
End Connections: BSP or NPT Threaded



	Size	Code	Price
BSP male x BSP female EPDM seals	1/4"	122.353	23.59
NPT male x NPT female EPDM seals	1/4"	122.355	23.59
BSP male x BSP female FPM seals	1/4"	122.354	29.26
NPT male x NPT female FPM seals	1/4"	122.356	29.26

	Size	Code	Price
BSP hose nozzle	1/4"	141.144	4.52
NPT hose nozzle	1/4"	14.0203	4.52
BSP male x BSP female EPDM seals	3/8 x 1/4"	122.751	23.59
BSP male x BSP female FPM seals	3/8 x 1/4"	122.757	29.26

Durapipe VKD Double Union Ball Valve

Description: In-line double union ball valve

Mounting: In any position

Maximum Fluid Pressure at 20°C: 16 bar

Fluid Temperature Range: 0°C - 60°C

Construction:

Body: PVC-U

Seals: EPDM or FPM

Seats: PTFE

End Connections: Solvent Sockets

Features: Safe blocked unions, multi-functional handle, easy actuator mounting platform and bracketing points included

Options: Electric or pneumatic actuation

 Durapipe



Inch Solvent Cement Sockets

Seals	Size	Code	Price
EPDM Seals PTFE Seats	3/8	H0 DKE 101	50.98
	1/2	H0 DKE 102	53.06
	3/4	H0 DKE 103	62.52
	1	H0 DKE 104	75.54
	1 1/4	H0 DKE 105	96.09
	1 1/2	H0 DKE 106	124.19
	2	H0 DKE 107	157.58
	2 1/2	H0 DKE 312	339.50
	3	H0 DKE 109	407.40
	4	H0 DKE 110	560.16

Inch Solvent Cement Sockets

Seals	Size	Code	Price
FPM Seals PTFE Seats	1/2	H0 DKF 102	63.35
	3/4	H0 DKF 103	75.11
	1	H0 DKF 104	93.77
	1 1/4	H0 DKF 105	113.70
	1 1/2	H0 DKF 106	149.16
	2	H0 DKF 107	204.53
	2 1/2	H0 DKF 312	407.41
	3	H0 DKF 109	500.77
	4	H0 DKF 110	636.56

MM Solvent Cement Sockets

Seals	Size	Code	Price
EPDM Seals PTFE Seats	16	H0 DKE 305	50.98
	20	H0 DKE 306	53.16
	25	H0 DKE 307	62.56
	32	H0 DKE 308	75.49
	40	H0 DKE 309	96.08
	50	H0 DKE 310	124.12
	63	H0 DKE 311	157.64
	75	H0 DKE 312	339.50
	90	H0 DKE 313	407.40
	110	H0 DKE 314	560.16

MM Solvent Cement Sockets

Seals	Size	Code	Price
FPM Seals PTFE Seats	20	H0 DKF 306	63.34
	25	H0 DKF 307	75.09
	32	H0 DKF 308	93.77
	40	H0 DKF 309	113.71
	50	H0 DKF 310	149.21
	63	H0 DKF 311	204.51
	75	H0 DKF 312	407.41
	90	H0 DKF 313	500.77
	110	H0 DKF 314	636.56

BSP Female Threaded

Seals	Size	Code	Price
EPDM Seals PTFE Seats	1/2	H0 DKE B02	57.06
	3/4	H0 DKE B03	67.77
	1	H0 DKE B04	83.07
	1 1/4	H0 DKE B05	106.98
	1 1/2	H0 DKE B06	141.18
	2	H0 DKE B07	179.81
	2 1/2	H0 DKE B08	381.07
	3	H0 DKE B09	464.03

BSP Female Threaded

Seals	Size	Code	Price
FPM Seals PTFE Seats	1/2	H0 DKF B02	69.43
	3/4	H0 DKF B03	81.80
	1	H0 DKF B04	104.26
	1 1/4	H0 DKF B05	126.92
	1 1/2	H0 DKF B06	167.18
	2	H0 DKF B07	225.32
	2 1/2	H0 DKF B08	448.97
	3	H0 DKF B09	557.39

Durapipe VKD Valve Actuator Bracket

Size	Dimensions	Code	Price
3/8"/16	F03-04 x 11mm sq	KTP QCP EF	39.76
1/2"/20	F03-04 x 11mm sq	KTP QCP EF	39.76
3/4"/25	F03-05 x 11mm sq	KTP QCP GG	42.18
3/4"/25	F04 x 11mm sq	KTP QCP G4	42.18
1"/32	F03-05 x 11mm sq	KTP QCP HH	42.18
1"/32	F04 x 11mm sq	KTP QCP H4	42.20
1 1/4"/40	F05-07 x 14mm sq	KTP QCP II	48.21
1 1/2"/50	F05-07 x 14mm sq	KTP QCP JJ	48.21
2"/63	F05-07 x 14mm sq	KTP QCP LL	51.22

Praher Type S4 T-Port Ball Valve

Description: In-line horizontal T-port 3-way ball valve with lockable handle and union ends

Mounting: In any position

Maximum Fluid Pressure at 20°C: 16 bar

Fluid Temperature Range: 0°C-60°C

Construction:

Body: PVC-U

Seals: EPDM or FPM

Seats: PTFE

End Connections: Solvent Sockets, BSP Female Thread, HDPE Fusion Spigots

Option: Silicon-free



Inch Solvent Cement Unions

EPDM Seals	3/8"	12.0629	70.76
	1/2"	12.0631	70.76
PTFE Seals	3/4"	12.2995	71.98
	1"	12.2195	71.98
	1 1/4"	12.2997	110.44
	1 1/2"	12.2752	110.44
	2"	12.2754	138.62

MM Solvent Cement Unions

EPDM Seals	16	12.0625	70.76
	20	12.0627	70.76
PTFE Seals	25	12.1816	71.98
	32	12.1774	71.98
	40	12.2714	110.44
	50	12.2715	110.44
	63	12.2716	138.62

BSP Threaded Sockets

EPDM Seals	3/8"	12.0634	83.25
	1/2"	12.0636	83.25
PTFE Seals	3/4"	12.0638	84.85
	1"	12.1815	84.85
	1 1/4"	12.0939	127.36
	1 1/2"	12.0940	129.26
	2"	12.0941	169.21

Inch Solvent Cement Unions

FPM Seals	3/8"	12.0674	93.73
	1/2"	12.0676	93.73
PTFE Seals	3/4"	12.0671	97.11
	1"	12.0657	97.11
	1 1/4"	12.0778	143.07
	1 1/2"	12.0773	144.28
	2"	12.0775	179.98

MM Solvent Cement Unions

FPM Seals	16	12.0667	93.73
	20	12.0669	93.73
PTFE Seals	25	12.1831	97.11
	32	12.0307	97.11
	40	12.0767	143.07
	50	12.0768	144.28
	63	12.0769	179.98

Praher Type S4 L-Port Ball Valve

Description: In-line horizontal L-port 3-way ball valve with lockable handle and union ends

Mounting: In any position

Maximum Fluid Pressure at 20°C: 16 bar

Fluid Temperature Range: 0°C-60°C

Construction:

Body: PVC-U

Seals: EPDM or FPM

Seats: PTFE

End Connections: Solvent Sockets, BSP Female Thread, HDPE Fusion Spigots

Option: Silicon-free



Inch Solvent Cement Unions

EPDM Seals	3/8"	12.0630	70.76
	1/2"	12.0633	70.76
PTFE Seals	3/4"	12.2996	71.98
	1"	12.1897	71.98
	1 1/4"	12.2998	110.44
	1 1/2"	12.2753	110.44
	2"	12.2755	138.62

Inch Solvent Cement Unions

FPM Seals	3/8"	12.0675	93.73
	1/2"	12.0677	93.73
PTFE Seals	3/4"	12.0672	97.11
	1"	12.0658	97.11
	1 1/4"	12.0779	143.07
	1 1/2"	12.0774	144.28
	2"	12.0776	179.98

MM Solvent Cement Unions

EPDM Seals	16	12.0626	70.76
	20	12.0628	70.76
PTFE Seals	25	12.1832	71.98
	32	12.1833	71.98
	40	12.2717	110.44
	50	12.2718	110.44
	63	12.2719	138.62

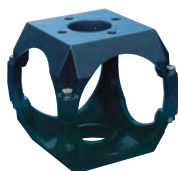
MM Solvent Cement Unions

FPM Seals	16	12.0668	93.73
	20	12.0670	93.73
PTFE Seals	25	12.1834	97.11
	32	12.1835	97.11
	40	12.0770	143.07
	50	12.0771	144.28
	63	12.0772	179.98

BSP Threaded Sockets

EPDM Seals	3/8"	12.0635	83.25
	1/2"	12.0637	83.25
PTFE Seals	3/4"	12.0942	84.85
	1"	12.1836	84.85
	1 1/4"	12.0937	127.36
	1 1/2"	12.2877	129.26
	2"	12.0606	169.21

Praher Valve Bracket for Type S4 T or L-Port Ball Valve



Size	Code	Price
3/8"/16	17.0042	23.44
1/2"/20	17.0042	23.44
3/4"/25	17.0022	24.97
1"/32	17.0022	24.97
1 1/4"/40	17.0001	28.19
1 1/2"/50	17.0001	28.19
2"/63	17.0018	31.55

Includes:

PVC-U Valve Bracket, Screws and Nuts



Valve shown complete with bracket

Spears 2000 Horizontal T-Port & L-Port Ball Valve

Description: In-line horizontal 3-way T-port or L-port ball valve with lockable handle and union ends

Mounting: In any position

Maximum Fluid Pressure at 20°C: Sizes 1/2" to 2" - 16 bar;
sizes 2 1/2" to 4" - 10 bar

Fluid Temperature Range: 0°C-60°C

Construction:

Body: PVC-U

Seals: EPDM or FPM

Seats: PTFE

End Connections: Solvent Sockets, NPT Female Threaded, Flanged ANSI 150



Inch Solvent Cement Sockets

EPDM Seals PTFE Seats	1/2	5022*1-005	83.78
	3/4	5022*1-007	99.87
	1	5022*1-010	121.15
	1 1/4	5022*1-012	140.28
	1 1/2	5022*1-015	164.65
	2	5022*1-020	201.42
	2 1/2	5022*1-025	678.50
	3	5022*1-030	692.29
	4	5022*1-040	1254.38

Inch Solvent Cement Sockets

FPM Seals PTFE Seats	1/2	5032*1-005	90.83
	3/4	5032*1-007	107.53
	1	5032*1-010	133.42
	1 1/4	5032*1-012	158.51
	1 1/2	5032*1-015	179.98
	2	5032*1-020	235.10
	2 1/2	5032*1-025	721.38
	3	5032*1-030	732.86
	4	5032*1-040	1268.15

NPT Female Threaded Sockets

EPDM Seals PTFE Seats	1/2	5021*1-005SR	86.54
	3/4	5021*1-007SR	103.23
	1	5021*1-010SR	124.36
	1 1/4	5021*1-012SR	146.73
	1 1/2	5021*1-015SR	175.38
	2	5021*1-020SR	212.13
	2 1/2	5021*1-025SR	708.38
	3	5021*1-030SR	723.68
	4	5021*1-040SR	1288.06

NPT Female Threaded Sockets

FPM Seals PTFE Seats	1/2	5031*1-005SR	94.97
	3/4	5031*1-007SR	110.89
	1	5031*1-010SR	136.79
	1 1/4	5031*1-012SR	164.65
	1 1/2	5031*1-015SR	190.69
	2	5031*1-020SR	246.58
	2 1/2	5031*1-025SR	751.25
	3	5031*1-030SR	762.72
	4	5031*1-040SR	1301.85

Flanged ANSI 150

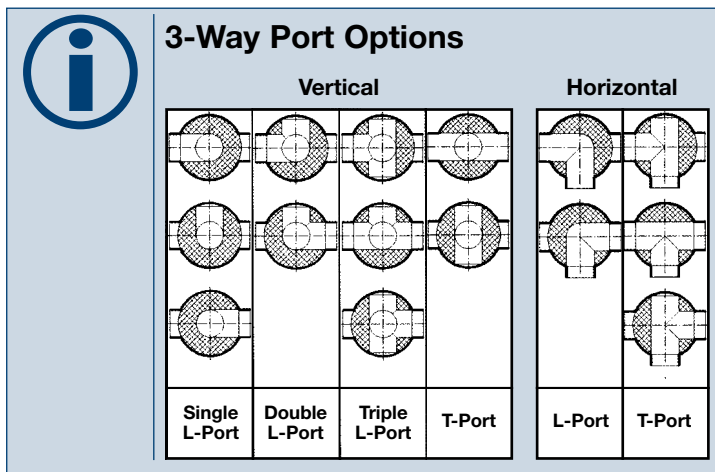
EPDM Seals PTFE Seats	1/2	5023*1-005	171.54
	3/4	5023*1-007	179.19
	1	5023*1-010	255.03
	1 1/4	5023*1-012	482.45
	1 1/2	5023*1-015	497.02
	2	5023*1-020	645.57
	2 1/2	5023*1-025	1133.38
	3	5023*1-030	1148.69
	4	5023*1-040	1667.92

Flanged ANSI 150

FPM Seals PTFE Seats	1/2	5033*1-005	179.19
	3/4	5033*1-007	189.16
	1	5033*1-010	278.75
	1 1/4	5033*1-012	510.79
	1 1/2	5033*1-015	519.99
	2	5033*1-020	677.74
	2 1/2	5033*1-025	1327.88
	3	5033*1-030	1334.01
	4	5033*1-040	1822.60

* For T-Port insert T i.e. 5022T1-005
For L-Port insert L i.e. 5022L1-005

Please Note: The horizontal 'T' port valves have no branch shut off



Spears 2000 Vertical T-Port & L-Port Ball Valve

Description: In-line vertical 3-way T-port or L-port ball valve with lockable handle and union ends

Mounting: In any position

Maximum Fluid Pressure at 20°C: Sizes 1/2" to 2" - 16 bar; sizes 2 1/2" to 4" - 10 bar

Fluid Temperature Range: 0°C-60°C

Construction:

Body: PVC-U

Seals: EPDM or FPM

Seats: PTFE

End Connections: Solvent Sockets, NPT Female Threaded, Flanged ANSI 150



Inch Solvent Cement Sockets

EPDM Seals PTFE Seats	1/2	4722*1-005	83.32
	3/4	4722*1-007	97.72
	1	4722*1-010	118.85
	1 1/4	4722*1-012	143.66
	1 1/2	4722*1-015	166.18
	2	4722*1-020	204.46
	2 1/2	4722*1-025	716.77
	3	4722*1-030	731.34
4	4722*1-040	1265.09	

Inch Solvent Cement Sockets

FPM Seals PTFE Seats	1/2	4732*1-005	90.22
	3/4	4732*1-007	106.60
	1	4732*1-010	132.34
	1 1/4	4732*1-012	170.00
	1 1/2	4732*1-015	182.27
	2	4732*1-020	236.63
	2 1/2	4732*1-025	725.21
	3	4732*1-030	738.23
4	4732*1-040	1277.35	

NPT Threaded Sockets

EPDM Seals PTFE Seats	1/2	4721*1-005SR	84.72
	3/4	4721*1-007SR	101.08
	1	4721*1-010SR	122.22
	1 1/4	4721*1-012SR	150.40
	1 1/2	4721*1-015SR	176.91
	2	4721*1-020SR	215.94
	2 1/2	4721*1-025SR	746.65
	3	4721*1-030SR	761.21
4	4721*1-040SR	1298.80	

NPT Threaded Sockets

FPM Seals PTFE Seats	1/2	4731*1-005SR	91.58
	3/4	4731*1-007SR	109.83
	1	4731*1-010SR	135.54
	1 1/4	4731*1-012SR	176.13
	1 1/2	4731*1-015SR	192.97
	2	4731*1-020SR	248.12
	2 1/2	4731*1-025SR	755.07
	3	4731*1-030SR	768.86
4	4731*1-040SR	1311.05	

Flanged ANSI 150

EPDM Seals PTFE Seats	1/2	4723*1-005	172.30
	3/4	4723*1-007	180.73
	1	4723*1-010	258.06
	1 1/4	4723*1-012	486.29
	1 1/2	4723*1-015	504.68
	2	4723*1-020	650.17
	2 1/2	4723*1-025	1137.96
	3	4723*1-030	1153.28
4	4723*1-040	1677.09	

Flanged ANSI 150

FPM Seals PTFE Seats	1/2	4733*1-005	178.45
	3/4	4733*1-007	188.38
	1	4733*1-010	279.53
	1 1/4	4733*1-012	513.85
	1 1/2	4733*1-015	519.99
	2	4733*1-020	678.50
	2 1/2	4733*1-025	1326.35
	3	4733*1-030	1335.55
4	4733*1-040	1756.74	

* For T-Port insert T i.e. 4722T1-005
For L-Port insert L i.e. 4722L1-005



Additional L-Port Options

The Spears 2000 Vertical L-Port Ball Valve is also available at additional cost with:

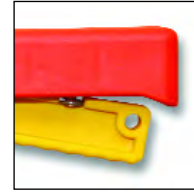
- Double L-Port Function
- Triple L-Port Function

Please enquire for details and prices.

manual valves

Praher K4 Butterfly Valve

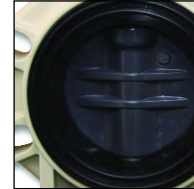
NEW



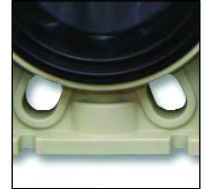
Locking Handle



Universal Drilling



PP-GF Body
PVCu disc



Support Lugs in
Base

Features

- Only Body Seal and Disc in contact with media
- Double sealed shaft
- Valve support lugs in base
- Direct actuator mounting
- Low torque operation
- Multi-position Lockable Handle
- Manual or Gear operation
- All sizes PN10 rated
- Universal drilling - can be used with DIN, ANSI, BS and JIS flanges

Materials

Body - PP-GF
Disc - PVCu
Seals - EPDM or FPM

Sizes

2 1/2" - 8"

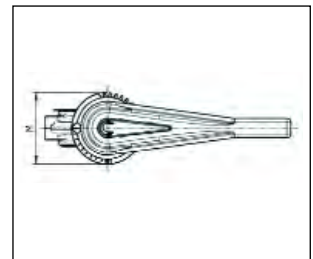
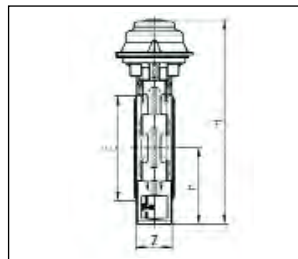
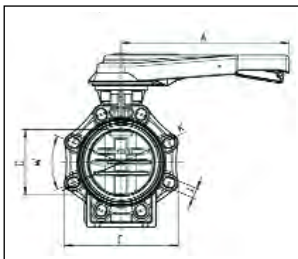
Pressure Rating

PN10

Connections

Between flanges, universal drilled

Valve Dimensions



Size	2 1/2"/75	3"/90	4"/110	6"/160	8"/225
A	230	230	300	386	386
D	65	80	100	150	200
C	133	176	206	261	314
W	90°	45°	45°	45°	45°
J	19	19	19	23	23
K	127-145	146-160	175-190.5	234.5-241.3	290-298.5
H	285	292	322	396	458
h	100	100	115	147.5	175
E	98	116	146	196	251
M	114	114	114	150	150
Z	46	49	56	70	71
PN	10 bar	10 bar	10 bar	10 bar	10 bar

Dimensions in mm

Praher Type K4 Butterfly Valve

Description: Lug style butterfly valve with universal drilling for mounting between flanges. (DIN, ANSI & BS)

Construction:

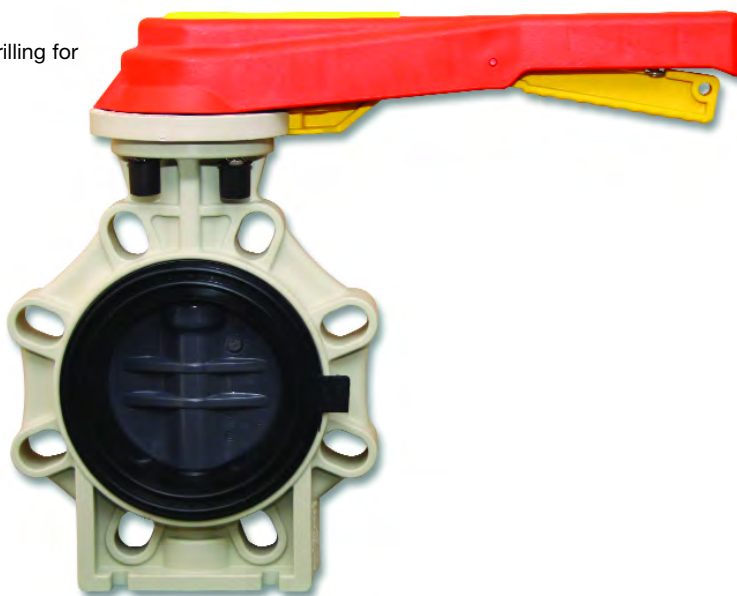
Body: PP-GF

Disc: PVCu

Seals: EPDM or FPM

Pressure rating: PN10

Size: 2"/75mm - 8"/225mm



Features

- Only Body Seal and Disc in contact with media
- Double sealed shaft
- Valve support lugs in base
- Direct actuator mounting
- Low torque operation
- Multi-position Lockable Handle
- Manual or Gear operation
- All sizes PN10 rated
- Universal drilling - can be used with DIN, ANSI, BS and JIS flanges

Lever Operated

EPDM Seals

2 1/2"/75	12.5860	158.76
3"/90	12.5861	186.17
4"/110	12.5862	203.18
5"/140	12.8456	286.34
6"/160	12.5863	332.64
8"/225	12.5864	465.89

Lever Operated

FPM Seals

2 1/2"/75	12.5865	234.36
3"/90	12.5866	290.12
4"/110	12.5867	320.36
5"/140	12.8457	409.66
6"/160	12.5868	459.27
8"/225	12.5869	618.98



Gear Operated

EPDM Seals

2 1/2"/75	12.8010	369.68
3"/90	12.8011	397.09
4"/110	12.8012	403.99
5"/140	On Application	
6"/160	12.8013	538.46
8"/225	12.8014	671.71

Gear Operated

FPM Seals

2 1/2"/75	12.8015	445.28
3"/90	12.8016	501.04
4"/110	12.8017	521.17
5"/140	On Application	
6"/160	12.8018	665.09
8"/225	12.8019	824.79

Praher Type S4 Butterfly Valve

Description: Wafer style butterfly valve

Mounting: In any position, between flanges to BS4504 EN1072 PN10

Maximum Fluid Pressure at 20°C: Sizes 3"/90mm to 5"/140mm - 10 bar; sizes 6"/160mm and 8"/225mm - 6 bar

Fluid Temperature Range: 0°C-60°C

Construction:

Body and Disc: PVC-U **Seals:** EPDM or FPM **Shaft:** Stainless Steel 304

End Connections: Flange mounted (flanges not included) **Option:** Silicon-free

Lever Operated

EPDM Seals	3/90	12.1919	172.30
	4/110	12.1892	188.38
	5/140	12.2001	222.84
	6/160	12.1871	255.78
	8/225	12.1872	327.00
FPM Seals	3/90	12.1923	297.89
	4/110	12.1924	324.70
	5/140	12.2192	385.21
	6/160	12.1925	441.86
	8/225	12.1926	565.16



Gear Operated

EPDM Seals	3/90	12.2322	544.49
	4/110	12.2321	561.34
	5/140	12.2320	620.31
	6/160	12.2319	635.62
	8/225	12.2318	724.43
FPM Seals	3/90	12.2393	587.37
	4/110	12.2394	607.30
	5/140	12.2395	684.62
	6/160	12.2396	691.53
	8/225	12.2397	797.96



Technical Resources

Register online for our technical catalogue

www.ipsflowsystems.com

Or call our technical team on:

0800 975 79 71



technical handbook

Spears Butterfly Valve

Description: Wafer style butterfly valve
Mounting: In any position, between flanges to ANSI 150
Maximum Fluid Pressure at 20°C: 10 bar
Fluid Temperature Range: 0°C-60°C
Construction:
Body and Disc: PVC-U
Disc: Glass Reinforced PVC-U
Seals: EPDM or FPM
Shaft: Stainless Steel 316
End Connections: Flange mounted (flanges not included)



Lever Operated

EPDM Seals	Size	Part No.	Price
	1 1/2	722311-015	197.96
	2	722311-020	215.19
	2 1/2	722311-025	227.44
	3	722311-030	228.99
	4	722311-040	244.29
	6	722311-060	361.45
	8	722311-080	683.10

FPM Seals	Size	Part No.	Price
	1 1/2	723311-015	344.62
	2	723311-020	352.28
	2 1/2	723311-025	370.65
	3	723311-030	389.79
	4	723311-040	420.44
	6	723311-060	588.91
	8	723311-080	758.14

Gear Operated

EPDM Seals	Size	Part No.	Price
	1 1/2	722321-015	608.05
	2	722321-020	616.47
	3	722321-030	634.86
	4	722321-040	666.24
	6	722321-060	801.01
	8	722321-080	1081.31
	10	722321-100	1462.68
	12	722321-120	2015.58

FPM Seals	Size	Part No.	Price
	1 1/2	723321-015	850.04
	2	723321-020	857.69
	3	723321-030	905.16
	4	723321-040	926.61
	6	723321-060	1214.56
	8	723321-080	1458.07
	10	723321-100	3230.15
	12	723321-120	5809.35

Also available bare shaft for remote or actuator mounting.
 Please enquire for details.

Durapipe FK Butterfly Valve

Description: Wafer style butterfly valve
Mounting: In ant position, between flanges to BS4504 PN10; BS10 table D/E, or ANSI 150
Maximum Fluid Pressure at 20°C: 10 bar
Fluid Temperature Range: 0°C - 60°C
Construction:
Body: Glass reinforced polypropylene
Disc: PVC-U
Seals: EPDM, FPM or NBR
End Connections: Flange mounted (Flanges not included)
Options: Lever or gear operation; electric or pneumatic actuation



Lever Operated

EPDM Seals	Size	Part No.	Price
	1 1/2/50	H0 FKE 106	166.61
	2/63	H0 FKE 107	175.75
	2 1/2/75	H0 FKE 108	193.01
	3/90	H0 FKE 109	212.70
	4/110	H0 FKE 110	257.63
	5/140	H0 FKE 111	333.56
	6/160	H0 FKE 112	410.15
	8/225	H0 FKE 113	610.47

FPM Seals	Size	Part No.	Price
	1 1/2/50	H0 FKF 106	201.46
	2/63	H0 FKF 107	213.49
	2 1/2/75	H0 FKF 108	237.00
	3/90	H0 FKF 109	248.61
	4/110	H0 FKF 110	296.87
	5/140	H0 FKF 111	373.42
	6/160	H0 FKF 112	458.39
	8/225	H0 FKF 113	669.22

Gear Operated

EPDM Seals	Size	Part No.	Price
	2 1/2/75	HV FKE 108	450.78
	3/90	HV FKE 109	487.11
	4/110	HV FKE 110	514.21
	5/140	HV FKE 111	588.76
	6/160	HV FKE 112	684.54
	8/225	HV FKE 113	946.16
	10/250	HV FKE 114	1631.88
	12/315	HV FKE 115	1678.08

FPM Seals	Size	Part No.	Price
	2 1/2/75	HV FKF 108	488.32
	3/90	HV FKF 109	505.36
	4/110	HV FKF 110	552.73
	5/140	HV FKF 111	627.88
	6/160	HV FKF 112	711.30
	8/225	HV FKF 113	952.31
	10/250	HV FKF 114	2656.34
	12/315	HV FKF 115	2875.99

Implex Economy Butterfly Valve

Description: Wafer style butterfly valve
Mounting: In any position
Maximum Fluid Pressure at 20°C: Sizes 2"/63mm to 5"/140mm - 10 bar;
 Sizes 6"/160mm to 10"/250mm - 6 bar
Fluid Temperature Range: 0°C-50°C
Construction:
Body and Disc: PVC-U **Seals:** EPDM
Shaft: Plated Steel **End Connections:** Flanged



Valve shown flanged style

Lever Operated

Wafer Style EPDM Seals			
	2/63	09626	111.66
	2 1/2/75	09627	116.10
	3/90	09628	132.18
	4/110	09629	145.36
	125	09630	166.95
	5/140	09631	172.30
	6/160	09632	198.35
	8/225	09633	286.04
	10/250	09634	549.07
	12/315	09635	1926.92

Lever Operated

Flanged PN10 EPDM Seals			
	3	09071	176.91
	4	09072	202.16
	6	09074	349.97
	8	09075	495.48

Lever Operated

Flanged PN10 EPDM Seals			
	63	09640	117.02
	75	09641	126.20
	90	09642	176.91
	110	09643	202.16
	125	09644	241.25
	140	09645	264.22
	160	09646	349.97
	200	09647	495.48
	225	09648	495.48
	250	09649	978.70
	315	09650	2461.62

Clamp Union Sight Glass

Description: Clear Sight Glass with Clamp Union Connections
Mounting: In any position
Maximum Fluid Pressure at 20°C: Sizes 2"/63mm to 6"/160mm 10 bar
Fluid Temperature Range: 0°C - 60°C
Construction:
Body: Clear PVC-U
Seals: EPDM
End Connections: Clamp Unions in PVC-U or PE



Inch Clamp Union Connections

EPDM Seals			
	3	18038	88.61
	4	18039	100.76
	5	18011	148.09
	6	18042	225.22

MM Clamp Union Connections

EPDM Seals			
	40	18004	55.89
	50	18005	55.89
	63	18006	67.49
	75	18007	82.89
	90	18008	88.61
	110	18009	100.76
	125	18010	115.99
	140	18011	148.09
	160	18012	225.22
	200	18013	331.89

Clamp Union Butterfly Valve

Description: Butterfly Valve with Clamp Union Connections

Mounting: In any position

Maximum Fluid Pressure at 20°C: Sizes 2"/63mm to 5"/140mm 10 bar;
size 6"/160mm - 6 bar

Fluid Temperature Range: 0°C-60°C

Construction:

Body and Disc: PVC-U

Seals: EPDM

Shaft: Plated Steel

End Connections: Clamp Unions in PVC-U or PE



Lever Operated
EPDM Seals



Lever Operated
EPDM Seals

Inch Clamp Union Connections

3	19N012	192.23
4	19N013	219.02
5	19N025	286.41
6	19N016	379.83
8	19N017	514.93

MM Clamp Union Connections

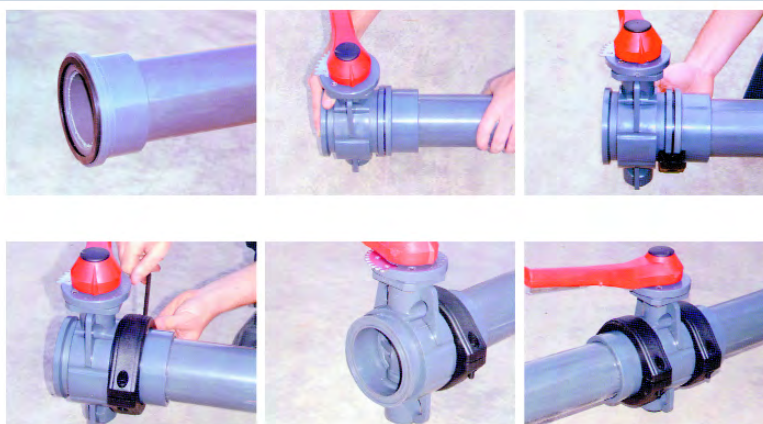
63	19N020	141.69
75	19N021	141.69
90	19N022	192.23
110	19N023	219.02
125	19N024	261.89
140	19N025	286.41
160	19N026	379.83
200	19N027	514.93
225	19N028	514.93

Valve Only

63/75	19N001	127.62
90	19N002	138.75
110	19N003	152.56
125	19N004	175.38
140	19N005	180.73
160	19N006	208.29
200/225	19N007	303.57



Easy Clamp Union Assembly



Asahi Type 57 Butterfly Valve

Description: Wafer style butterfly valve
Mounting: In any position, between flanges to ANSI 150
Maximum Fluid Pressure at 20°C: Sizes 1 1/2" to 10" : 10 bar
 Sizes 12" to 14" : 6.9 bar
Fluid Temperature Range: 0°C-60°C
Construction:
Body: PVC-U
Disc: PVC-U, Polypropylene or PVDF
Seals: EPDM, FPM or Nitrile
Shaft: Stainless Steel 316
End Connections: Flange mounted (flanges not included)



PVC-U Disc

Lever Operated EPDM Seals	1 1/2	3722-015	298.71
	2	3722-020	312.93
	2 1/2	3722-025	351.34
	3	3722-030	338.53
	4	3722-040	394.00
	6	3722-060	591.72
8	3722-080	1096.69	

Lever Operated FPM Seals	1 1/2	3724-015	475.08
	2	3724-020	564.70
	2 1/2	3724-025	607.38
	3	3724-030	490.74
	4	3724-040	597.42
	6	3724-060	965.82
8	3724-080	1613.01	

Polypropylene Disc

Lever Operated EPDM Seals	1 1/2	3730-015	298.71
	2	3730-020	312.93
	2 1/2	3730-025	351.34
	3	3730-030	338.53
	4	3730-040	394.00
	6	3730-060	591.72
8	3730-080	1096.69	

Lever Operated Nitrile Seals	1 1/2	3732-015	298.71
	2	3732-020	312.93
	2 1/2	3732-025	351.34
	3	3732-030	338.53
	4	3732-040	394.00
	6	3732-060	591.72
8	3732-080	1096.69	

Lever Operated FPM Seals	1 1/2	3731-015	475.08
	2	3731-020	564.70
	2 1/2	3731-025	607.38
	3	3731-030	490.74
	4	3731-040	597.42
	6	3731-060	965.82
8	3731-080	1613.01	

PVDF Disc

Lever Operated EPDM Seals	1 1/2	3733-015	311.50
	2	3733-020	320.05
	2 1/2	3733-025	368.40
	3	3733-030	382.63
	4	3733-040	439.53
	6	3733-060	800.82
8	3733-080	1386.85	

Lever Operated FPM Seals	1 1/2	3734-015	573.23
	2	3734-020	661.42
	2 1/2	3734-025	724.01
	3	3734-030	631.55
	4	3734-040	755.30
	6	3734-060	1342.76
8	3734-080	2217.54	



Additional Options

- Lug style for blocking and end-of-line applications
- Titanium and Hastelloy stem
- Stem extensions
- Chain operators

Please enquire for details and prices.

PVC-U Disc

Plasgear Operated EPDM Seals	1 1/2	3723-015	853.45	Plasgear Operated FPM Seals	1 1/2	3725-015	847.76
	2	3723-020	876.21		2	3725-020	793.71
	2 1/2	3723-025	917.46		2 1/2	3725-025	980.04
	3	3723-030	918.88		3	3725-030	863.41
	4	3723-040	978.61		4	3725-040	967.24
	6	3723-060	1217.59		6	3725-060	1338.49
	8	3723-080	1462.24		8	3725-080	1992.80
	10	3723-100	2345.84		10	3725-100	4936.63
	12	3723-120	3650.19		12	3725-120	7258.57
	14	3723-140	on application		14	3725-140	on application
Metal Gear Operated EPDM Seals	12	3789-120	on application	Metal Gear Operated FPM Seals	12	3790-120	on application
	14	3789-140	on application		14	3790-140	on application

Polypropylene Disc

Plasgear Operated EPDM Seals	1 1/2	3719-015	819.32	Plasgear Operated Nitrile Seals	1 1/2	3721-015	819.32
	2	3719-020	833.54		2	3721-020	833.54
	2 1/2	3719-025	871.93		2 1/2	3721-025	871.93
	3	3719-030	859.14		3	3721-030	859.14
	4	3719-040	914.61		4	3721-040	914.61
	6	3719-060	1112.33		6	3721-060	1112.33
	8	3719-080	1331.38		8	3721-080	1331.38
	10	3719-100	2073.03		10	3721-100	2073.03
	12	3719-120	3379.36		12	3721-120	3379.36
	14	3719-140	on application		14	3721-140	on application
Metal Gear Operated EPDM Seals	12	3786-120	on application	Metal Gear Operated Nitrile Seals	12	3787-120	on application
	14	3786-140	on application		14	3787-140	on application
Plasgear Operated FPM Seals	1 1/2	3720-015	847.76				
	2	3720-020	793.71				
	2 1/2	3720-025	980.04				
	3	3720-030	863.41				
	4	3720-040	967.24				
	6	3720-060	1338.49				
	8	3720-080	1992.80				
	10	3720-100	4936.63				
	12	3720-120	7258.57				
	14	3720-140	on application				
Metal Gear Operated FPM Seals	12	3788-120	on application				
	14	3788-140	on application				

PVDF Disc

Plasgear Operated EPDM Seals	1 1/2	3717-015	955.87	Plasgear Operated FPM Seals	1 1/2	3718-015	1322.88
	2	3717-020	969.80		2	3718-020	1248.60
	2 1/2	3717-025	1037.51		2 1/2	3718-025	1535.35
	3	3717-030	1057.42		3	3718-030	1405.92
	4	3717-040	1135.08		4	3718-040	1577.17
	6	3717-060	1640.90		6	3718-060	2401.61
	8	3717-080	2178.57		8	3718-080	3636.26
	10	3717-100	3566.56		10	3718-100	6429.80
	12	3717-120	5432.49		12	3718-120	9313.68
	14	3717-140	on application		14	3718-140	on application
Metal Gear Operated EPDM Seals	12	3791-120	on application	Metal Gear Operated FPM Seals	12	3792-120	on application
	14	3791-140	on application		14	3792-140	on application

Praher T4 Diaphragm Valve



Lockable Handle



Visual Position Indicator



Optional Valve Support Plates

General

Sealing material: EPDM / EPDM-PTFE / FPM

Body material: PVC-u - PP - PVDF

Dimensions: DN 15/d 20 - DN125/d140

Operating Pressure

DN 15 / 1/2" - DN 125 / 5" 10 bar

Connections

Solvent cement socket (ASTM, DIN, JIS)

Solvent cement spigot (DN 15 - DN 65)

(ASTM, DIN, JIS)

Flange connection (ANSI, ASA, DIN, JIS)

DN65 with stub flange and backing ring

Technical Specification

For example:

TYPE PRAHER, DIN 2403

PVC Diaphragm valve T4 DN 15 d20

Solvent cement spigot ASTM

Sealing material EPDM-PTFE

Safety gear wheel

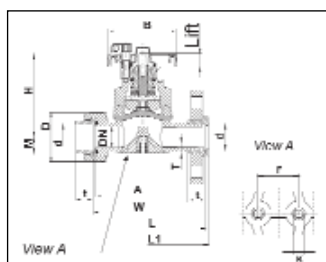
Max. Operating pressure 10 bar

Features

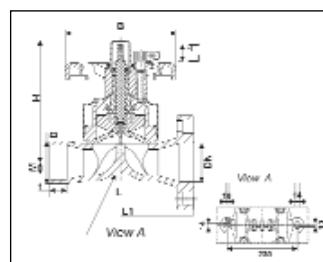
- Safety gear wheel
- Corrosion Resistant
- Maintenance free operation over a long working life
- Suitable for aggressive and dirty media
- Radial installation or removal
- Easy replacement of the diaphragms

Valve Dimensions

DN 15 - DN 50



DN 65 - DN 80



d	20	25	32	40	50	63	75	90	110	140
DN	15	20	25	32	40	50	65	80	100	125
G	1/2"	3/4"	1"	1 1/4"	1 1/2"	2"	2 1/2"	3"	4"	5"
M	17.0	17.0	21.0	33.0	33.0	40.3	25.0	25.0	25.0	25.0
H	100.0	100.0	107.0	144.0	144.0	170.0	260.0	260.0	330.0	330.0
B	86.0	86.0	86.0	136.0	136.0	136.0	234.0	234.0	234.0	234.0
D	43.0	53.0	60.0	74.0	83.0	103.0	-	-	-	-
F	25.0	25.0	25.0	45.0	45.0	45.0	-	-	-	-
Lift	9.0	9.0	11.0	22.0	22.0	28.0	35.0	35.0	45.0	45.0
K	M6	M6	M6	M8	M8	M8	-	-	-	-
L	124.0	144.0	154.0	174.0	194.0	224.0	284.0	-	-	-
L1	130.0	150.0	160.0	180.0	200.0	230.0	300.0	310.0	350.0	400.0
T	12.0	12.0	12.0	15.0	15.0	15.0	-	-	-	-
Z	96.0	114.0	122.0	142.0	160.0	190.0	-	-	-	-
A	90.0	108.0	116.0	136.0	154.0	184.0	-	-	-	-
t	16.0	19.0	22.0	26.0	31.0	38.0	44.0	54.5	-	-
PN	10.0	10.0	10.0	10.0	10.0	10.0	10.0	10.0	10.0	10.0

Dimensions in mm

Praher Type T4 Diaphragm Valve

Description: In-line diaphragm valve with position indicator

Mounting: In any position

Maximum Fluid Pressure at 20°C: 10 bar

Fluid Temperature Range: 0°C-60°C

Construction:

Body: PVC-U

Diaphragm: EPDM, FPM or PTFE (EPDM backed)

End Connections: Solvent Sockets, Solvent Spigots, Flanged BS4504 EN1072 PN10

Option: Silicon-free



Inch Solvent Cement Unions

EPDM Diaphragm	1/2	122 905	62.34
	3/4	122 906	67.69
	1	122 907	84.56
	1 1/4	122 908	121.77
	1 1/2	122 909	132.80
	2	122 910	163.88

MM Solvent Cement Unions

EPDM Diaphragm	20	122 212	59.26
	25	122 213	64.33
	32	122 214	80.41
	40	122 215	115.95
	50	122 216	126.36
	63	122 217	156.23

Inch Solvent Cement Unions

PTFE Diaphragm	1/2	122 926	128.96
	3/4	122 927	135.09
	1	122 928	154.69
	1 1/4	122 929	219.02
	1 1/2	122 930	238.16
	2	122 931	300.98

MM Solvent Cement Unions

PTFE Diaphragm	20	122 832	122.84
	25	122 834	128.66
	32	122 835	147.19
	40	122 836	208.29
	50	122 837	226.67
	63	122 838	286.41

Inch Solvent Cement Unions

FPM Diaphragm	1/2	122 911	128.96
	3/4	122 912	135.09
	1	122 913	154.69
	1 1/4	122 914	219.02
	1 1/2	122 915	238.16
	2	122 916	300.98

MM Solvent Cement Unions

FPM Diaphragm	20	122 376	122.84
	25	122 377	128.66
	32	122 378	147.19
	40	122 379	208.29
	50	122 380	226.67
	63	122 381	286.41

Flanged PN10

EPDM Diaphragm	1/2	12 0189	67.25
	3/4	12 0190	74.58
	1	12 0191	90.66
	1 1/4	12 0192	138.16
	1 1/2	12 0193	149.18
	2	12 0194	184.57
	2 1/2	12 0198	402.81
	3	12 0200	478.62
	4	12 0898	686.15
	5	12 0899	857.69

Flanged PN10

PTFE Diaphragm	1/2	12 0212	132.34
	3/4	12 0213	137.40
	1	12 0216	163.13
	1 1/4	12 0217	254.23
	1 1/2	12 0218	264.97
	2	12 0219	333.88
	2 1/2	12 0227	635.62
	3	12 0228	711.44
	4	12 0896	948.07
	5	12 0897	1222.22

Flanged PN10

FPM Diaphragm	1/2	12 0202	132.34
	3/4	12 0203	137.40
	1	12 0205	163.13
	1 1/4	12 0206	254.23
	1 1/2	12 0208	264.97
	2	12 0209	333.88
	2 1/2	12 0210	635.62
	3	12 0211	711.44
	4	on application	on application
	5	on application	on application

Praher Diaphragm Valve Mounting Plate

- Ensures clearance of union nut from mounting surface
- Complete with two fixing screws

Valve Size	Plate Thickness	Code	Price
20	16.0	14 0103	5.51
25	23.0	14 0102	5.51
32	23.0	14 0102	5.51
40	18.5	14 0123	8.96
50	23.5	14 0109	8.96
63	23.5	14 0109	8.96



Praher diaphragm valve shown with mounting plate

Praher T4 Replacement Diaphragm

EPDM Diaphragm

20 ^{1/2}	05.0457	21.75
25 ^{3/4}	05.0457	21.75
32/1	05.0458	23.09
40/1 ^{1/4}	05.0459	26.36
50/1 ^{1/2}	05.0459	26.36
63/2	05.0460	27.40
75/2 ^{1/2}	12.0933	56.89
90/3	12.0933	56.89
110/4	12.0934	128.97
5	12.0934	128.97

EPDM/PTFE Diaphragm

20 ^{1/2}	05.0473	44.06
25 ^{3/4}	05.0473	44.06
32/1	05.0474	49.43
40/1 ^{1/4}	05.0475	61.35
50/1 ^{1/2}	05.0475	61.35
63/2	05.0476	69.41
75/2 ^{1/2}	12.0918	338.05
90/3	12.0918	338.05
110/4	12.0919	387.19
5	12.0919	387.19

FPM Diaphragm

20 ^{1/2}	05.0465	102.02
25 ^{3/4}	05.0465	102.02
32/1	05.0466	106.04
40/1 ^{1/4}	05.0467	117.35
50/1 ^{1/2}	05.0467	117.35
63/2	05.0468	248.70
75/2 ^{1/2}	12.0935	285.83
90/3	12.0935	285.83
110/4	12.0936	478.68
5	12.0936	478.68

Spears Diaphragm Valve

Description: In-line diaphragm valve with position indicator

Mounting: In any position

Maximum Fluid Pressure at 20°C: Sizes 1/2" to 2" - 16 bar (PTFE diaphragm - 10 bar); sizes 2 1/2" to 4" - 10 bar; size 6" - 6.5 bar; size 8" - 5 bar

Flanged valves (where size permits) - 10 bar

Fluid Temperature Range: 0°C-60°C

Construction:

Body: PVC-U

Seat: EPDM, FPM, PTFE (EPDM backed) or PTFE (FPM backed)

End Connections: Solvent Sockets, Solvent Spigots, NPT Female Threaded, Flanged

Features: Sizes 1/2" to 2" Solvent Socket valves also include NPT Female Threaded end connections



Inch Solvent Cement Unions

EPDM Diaphragm
EPDM Seals

1/2	2729- 005	78.41
3/4	2729- 007	89.00
1	2729- 010	109.66
1 1/4	2729- 012	164.65
1 1/2	2729- 015	173.08
2	2729- 020	204.47

Inch Solvent Cement Unions

FPM Diaphragm
FPM Seals

1/2	2739- 005	87.15
3/4	2739- 007	98.79
1	2739- 010	120.38
1 1/4	2739- 012	195.28
1 1/2	2739- 015	199.88
2	2739- 020	241.99

Inch Solvent Cement Unions

PTFE Diaphragm
EPDM Backed
EPDM Seals

1/2	2729T- 005	124.85
3/4	2729T- 007	133.42
1	2729T- 010	192.97
1 1/4	2729T- 012	264.97
1 1/2	2729T- 015	282.57
2	2729T- 020	322.40

Inch Solvent Cement Unions

PTFE Diaphragm
FPM Backed
FPM Seals

1/2	2739VT- 005	171.54
3/4	2739VT- 007	185.32
1	2739VT- 010	235.88
1 1/4	2739VT- 012	317.81
1 1/2	2739VT- 015	329.30
2	2739VT- 020	412.77

Flanged ANSI 150

EPDM Diaphragm
EPDM Seals

1/2	2723- 005	125.13
3/4	2723- 007	140.61
1	2723- 010	158.51
1 1/4	2723- 012	215.19
1 1/2	2723- 015	217.49
2	2723- 020	258.84
2 1/2	2723- 025	433.43
3	2723- 030	578.94
4	2723- 040	802.56
6	2723- 060	2041.62
8	2723- 080	3893.32

Flanged ANSI 150

FPM Diaphragm
FPM Seals

1/2	2733- 005	135.40
3/4	2733- 007	144.12
1	2733- 010	176.91
1 1/4	2733- 012	238.16
1 1/2	2733- 015	242.76
2	2733- 020	276.46
2 1/2	2733- 025	495.48
3	2733- 030	643.28
4	2733- 040	874.54
6	2733- 060	2268.29
8	2733- 080	4083.22

Flanged ANSI 150

PTFE Diaphragm
EPDM Backed
EPDM Seals

1/2	2793T- 005	171.54
3/4	2793T- 007	185.32
1	2793T- 010	235.88
1 1/4	2793T- 012	317.81
1 1/2	2793T- 015	329.30
2	2793T- 020	369.11
2 1/2	2793T- 025	684.62
3	2793T- 030	897.50
4	2793T- 040	1243.66
6	2793T- 060	3219.42
8	2793T- 080	4777.05

Flanged ANSI 150

PTFE Diaphragm
FPM Backed
FPM Seals

1/2	2793VT- 005	187.63
3/4	2793VT- 007	209.07
1	2793VT- 010	264.22
1 1/4	2793VT- 012	350.74
1 1/2	2793VT- 015	365.30
2	2793VT- 020	421.96
2 1/2	2793VT- 025	784.19
3	2793VT- 030	992.47
4	2793VT- 040	1381.50
6	2793VT- 060	3536.45
8	2793VT- 080	5366.71

Spears Needle Valve

Description: Globe or Angle pattern flow control valve
Mounting: In any position
Maximum Fluid Pressure at 20°C: 16 bar
Fluid Temperature Range: 0°C-60°C
Construction:
Body: PVC-U
Seal: PTFE
End Connections: Female NPT Threaded
Feature: Built-in panel or bracket mounting nut



Globe Pattern Valve

1/4	5591- 002	61.59
3/8	5591- 003	61.59

Angle Pattern Valve

1/4	5691- 002	61.59
3/8	5691- 003	61.59

ASV Stubbe Gauge Guard

Description: Pressure gauge connector with isolating diaphragm
Mounting: In any position
Maximum Fluid Pressure at 20°C: 10 bar
Fluid Temperature Range: 0°C-60°C
Construction:
Body: PVC-U
Diaphragm: PTFE (EPDM backed)

NPT Female x NPT Female	1/4x1/4	135539	70.73
	1/2x1/2	135542	70.73
Spigot/BSP Female x BSP Female	25x1/4x1/4	135533	70.73
	32x1/2x1/2	135536	70.73



Please note: gauge not included.

Don't see what you want?

We have access to a huge range of products that are not featured in our Handbook.

If you don't see what you want, give our team a call.



Spears Y-Pattern Valve

Description: In-line Y-Pattern throttling valve

Mounting: In any position

Maximum Fluid Pressure at 20°C: Sizes 1/2" to 2" - 10 bar; sizes 2 1/2" to 4" - 6 bar

Fluid Temperature Range: 0°C-60°C

Construction:

Body: PVC-U (grey or clear)

Seat: EPDM or FPM

End Connections: Solvent Sockets, Reinforced NPT Female Threaded, Flanged

Features: Globe valve design provides proportional opening to seating disc travel for more accurate flow control.

Special semi-rigid seating disc eliminates vibration for more accurate flow control

Y-Pattern reduces flow restriction over standard globe valve



Inch Solvent Cement Sockets

Grey Body EPDM	1/2	1722- 005	76.13
	3/4	1722- 007	89.14
	1	1722- 010	106.76
	1 1/4	1722- 012	130.03
	1 1/2	1722- 015	174.60
	2	1722- 020	247.36
	3	1722- 030	532.24
	4	1722- 040	903.65

Inch Solvent Cement Sockets

Grey Body FPM	1/2	1732- 005	80.41
	3/4	1732- 007	95.12
	1	1732- 010	114.11
	1 1/4	1732- 012	143.20
	1 1/2	1732- 015	184.57
	2	1732- 020	263.43
	3	1732- 030	578.94
	4	1732- 040	983.29

Inch Solvent Cement Sockets

Clear Body EPDM	1/2	1722- 005CL	95.12
	3/4	1722- 007CL	111.50
	1	1722- 010CL	133.42
	1 1/4	1722- 012CL	163.13
	1 1/2	1722- 015CL	217.49
	2	1722- 020CL	309.37
	3	1722- 030CL	665.48
	4	1722- 040CL	1128.79

Inch Solvent Cement Sockets

Clear Body FPM	1/2	1732- 005CL	100.47
	3/4	1732- 007CL	118.85
	1	1732- 010CL	142.59
	1 1/4	1732- 012CL	179.19
	1 1/2	1732- 015CL	230.51
	2	1732- 020CL	329.30
	3	1732- 030CL	723.68
	4	1732- 040CL	1229.88

NPT Female Threaded

Stainless Steel Reinforced

Grey Body EPDM	1/2	1721- 005 SR	79.02
	3/4	1721- 007 SR	93.59
	1	1721- 010 SR	112.58
	1 1/4	1721- 012 SR	153.93
	1 1/2	1721- 015 SR	189.16
	2	1721- 020 SR	266.49
	3	1721- 030 SR	571.28
	4	1721- 040 SR	944.99

NPT Female Threaded

Stainless Steel Reinforced

Grey Body FPM	1/2	1731- 005 SR	83.32
	3/4	1731- 007 SR	99.42
	1	1731- 010 SR	119.94
	1 1/4	1731- 012 SR	162.34
	1 1/2	1731- 015 SR	197.59
	2	1731- 020 SR	279.53
	3	1731- 030 SR	618.78
	4	1731- 040 SR	1024.64

Flanged ANSI 150

Grey Body EPDM	1/2	1723- 005	106.76
	3/4	1723- 007	122.84
	1	1723- 010	144.74
	1 1/4	1723- 012	170.00
	1 1/2	1723- 015	213.67
	2	1723- 020	300.20
	3	1723- 030	585.06
	4	1723- 040	1160.93

Flanged ANSI 150

Grey Body FPM	1/2	1733- 005	111.05
	3/4	1733- 007	128.66
	1	1733- 010	150.56
	1 1/4	1733- 012	181.49
	1 1/2	1733- 015	223.61
	2	1733- 020	314.75
	3	1733- 030	631.79
	4	1733- 040	1231.41

Valterra Slide Gate Valve

Description: In-line manually operated slide gate valve

Mounting: In any position

Maximum Fluid Pressure at 20°C: 1½"/50mm - 3.4 bar; 2"/63mm - 2.5 bar; 3"/90mm - 2 bar; 4"/110mm - 1.4 bar; 6" & 8" - 1 bar

Fluid Temperature Range: 0°C-40°C

Construction:

Body: ABS or PVC-U

Seals: Santopreme

Paddle: Polypropylene or Stainless Steel

End Connections: Solvent Socket, Solvent Spigot, NPT Threaded



Inch or mm Solvent Cement Sockets

Size	Connections	Colour	Body	Sockets	Paddle	Handle	Code	Price
1½"	Socket x Socket	Black	ABS	ABS	Polypropylene	Plastic	I7101	15.48
1½"	Socket x Socket	White	ABS	PVC-U	Polypropylene	Plastic	I6101	15.48
43x1½"	Socket x Spigot	Black	ABS	PVC-U	Polypropylene	Plastic	I7143IP	16.21
50mm	Socket x Socket	Grey	PVC-U	PVC-U	Polypropylene	Plastic	I8101	15.48
2"	Socket x Socket	Black	ABS	ABS	Polypropylene	Plastic	I7201	22.89
2"	Socket x Socket	White	ABS	PVC-U	Polypropylene	Plastic	I6201	22.46
2"	Socket x Socket	Black	ABS	ABS	Stainless Steel	Plastic	I5201	33.88
63mm	Socket x Socket	Grey	PVC-U	PVC-U	Polypropylene	Plastic	I8201	22.46
3"	Socket x Socket	Black	ABS	ABS	Polypropylene	Plastic	I7301	29.88
3"	Socket x Socket	White	ABS	PVC-U	Polypropylene	Plastic	I6301	29.32
3"	Socket x Socket	Black	ABS	ABS	Stainless Steel	Plastic	I5301	40.73
90mm	Socket x Socket	Grey	PVC-U	PVC-U	Polypropylene	Plastic	I8301	29.88
4"	Socket x Socket	Grey	PVC-U	PVC-U	Stainless Steel	Metal	I6401	110.12
110mm	Socket x Socket	Grey	PVC-U	PVC-U	Polypropylene	Plastic	I8401	110.12
6"	Socket x Socket	White	PVC-U	PVC-U	Stainless Steel	Metal	I6601	417.17
160mm	Socket x Socket	White	PVC-U	PVC-U	Stainless Steel	Metal	I8601	417.17
8"	Socket x Socket	White	PVC-U	PVC-U	Stainless Steel	Metal	I6801	570.34



Low Cost Flow Control

The Valterra Slide Gate Valve is a simple "pull to open, push to close" valve designed for low pressure applications. In addition to the valve, a range of optional end connections and fittings is also available. Please enquire for details.

Ball Float Valve

Description: Liquid level control valve

Mounting: In a horizontal position

Maximum Fluid Pressure at 20°C: 10 bar

Fluid Temperature Range: 0°C-60°C

Construction:

Body: Polypropylene

Arm: Polypropylene

Float: Polypropylene

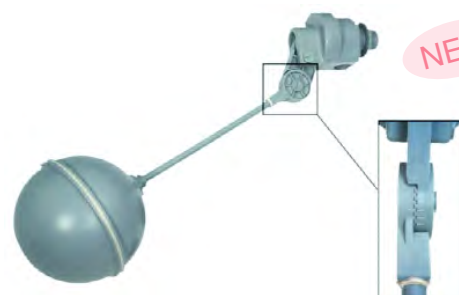
End Connections: BSP male threaded

Standard	Size	Code	Price
	½	03500102	29.66
	1	03500104	118.66
	1½	03500106	148.95

Adjustable Cam	Size	Code	Price
	½	HA/BVADJ/1PE/EP	38.20
	1	HA/BVADJ/5PE/EP	134.82
	1½	HA/BVADJ/7PE/EP	162.91



Standard Design



Adjustable Cam Design
5 Different Positions

Spears Gate Valve

Description: In-line gate valve with non rising stem

Mounting: In any position

Maximum Fluid Pressure at 20°C: Sizes up to 2" - 14 bar; 3" - 10 bar; 4" - 6 bar

Fluid Temperature Range: 0°C-60°C

Construction:

Body: PVC-U

Gate: Polypropylene

Seals: EPDM or FPM

Bonnet: PVC-U except 4" which is Stainless Steel 316

End Connections: Solvent Sockets, BSP or NPT Threaded, Flanged.



Inch Solvent Cement Sockets

EPDM Seals	Size	Part No.	Price
	1/2	2022- 005	21.44
	3/4	2022- 007	25.13
	1	2022- 010	29.88
	1 1/4	2022- 012	41.21
	1 1/2	2022- 015	53.00
	2	2022- 020	67.54
	3	2022- 030	395.15
	4	2022- 040	782.64

BSP Threaded Sockets

EPDM Seals	Size	Part No.	Price
	1/2	2025- 005	20.52
	3/4	2025- 007	25.13
	1	2025- 010	29.88
	1 1/4	2025- 012	41.21
	1 1/2	2025- 015	53.00
	2	2025- 020	67.54

MM Solvent Cement Sockets

EPDM Seals	Size	Part No.	Price
	20	2024- 005	20.52
	25	2024- 007	25.13
	32	2024- 010	29.88
	40	2024- 012	41.21
	50	2024- 015	53.00
	63	2024- 020	67.54

Flanged ANSI 150

EPDM Seals	Size	Part No.	Price
	1/2	2023- 005	102.46
	3/4	2023- 007	115.03
	1	2023- 010	126.04
	1 1/4	2023- 012	144.28
	1 1/2	2023- 015	167.71
	2	2023- 020	199.12
	2 1/2	2023- 025	600.38
	3	2023- 030	600.38
	4	2023- 040	981.74

Inch Solvent Cement Sockets

FPM Seals	Size	Part No.	Price
	1/2	2032- 005	22.66
	3/4	2032- 007	26.50
	1	2032- 010	32.79
	1 1/4	2032- 012	45.35
	1 1/2	2032- 015	57.77
	2	2032- 020	74.13
	3	2032- 030	434.21
	4	2032- 040	860.76

BSP Threaded Sockets

FPM Seals	Size	Part No.	Price
	1/2	2035- 005	22.66
	3/4	2035- 007	26.50
	1	2035- 010	32.79
	1 1/4	2035- 012	45.35
	1 1/2	2035- 015	57.77
	2	2035- 020	74.13

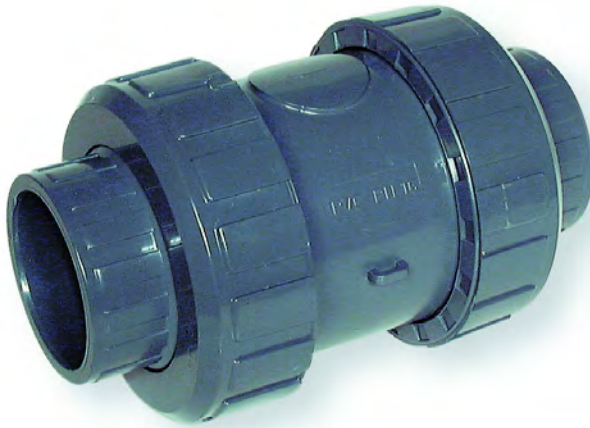
MM Solvent Cement Sockets

FPM Seals	Size	Part No.	Price
	20	2034- 005	22.66
	25	2034- 007	26.50
	32	2034- 010	32.79
	40	2034- 012	45.35
	50	2034- 015	57.77
	63	2034- 020	74.13

Flanged ANSI 150

FPM Seals	Size	Part No.	Price
	1/2	2033- 005	117.48
	3/4	2033- 007	131.27
	1	2033- 010	144.90
	1 1/4	2033- 012	171.54
	1 1/2	2033- 015	196.81
	2	2033- 020	212.90
	2 1/2	2033- 025	660.13
	3	2033- 030	660.13
	4	2033- 040	1079.78

Praher S4 Check Valve



True Union Design



Tagging Point



Shuttle Design

Materials

Body - PVCu
Seals - EPDM or FPM

Sizes

3/8" - 4"/16mm - 110mm

Pressure Rating

3/8"/16mm to 2.1/2"/75mm - 16 bar
3"/90mm - 10 bar
4"/110mm - 6 bar

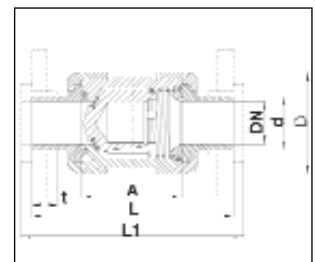
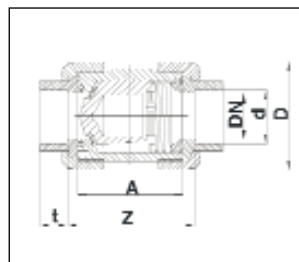
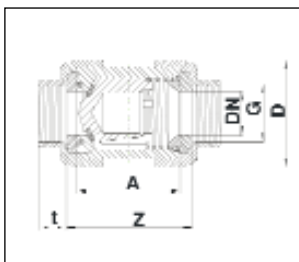
Connections

Solvent Cement Sockets
Solvent Cement Spigots
BSP Female Threaded
Flanged PN10 or ANSI 150
HDPE Fusion Spigots

Features

- True Union design for easy maintenance
- Tagging point included
- Stainless steel spring (optional PTFE sleeve)

Valve Dimensions



d	16	20	25	32	40	50	63	75	90	110
DN	10	15	20	25	32	40	50	65	80	80
G	3/8"	1/2"	3/4"	1"	1 1/4"	1 1/2"	2"	2 1/2"	3"	4"
L	114.0	124.0	144.0	154.0	174.0	194.0	224.0	284.0	300.0	340.0
L1	120.0	130.0	150.0	160.0	180.0	200.0	230.0	290.0	310.0	350.0
A	62.0	62.0	69.0	73.0	83.0	94.0	108.0	133.0	160.0	160.0
Z	71.0	67.5	79.0	84.0	96.0	114.0	134.0	162.0	208.0	227.0
t	14.5	16.0	17.0	19.5	22.0	25.0	29.0	34.5	38.5	44.0
D	52.5	52.5	62.0	69.5	84.0	100.0	120.0	155.0	187.0	187.0
PN	10	10	10	10	10	10	10	10	6	6

Dimensions in mm



Praher Type S4 Check (Non-Return) Valve

Description: In-line spring cone check valve

Mounting: In any position

Maximum Fluid Pressure at 20°C: Sizes up to 2¹/₂"/75mm - 16 bar;
3"/90mm - 10 bar; 4"/110mm - 6 bar

Fluid Temperature Range: 0°C-60°C

Construction:

Body: PVC-U

Seals: EPDM or FPM

Spring: Stainless Steel (optional PTFE sleeve)

End Connections: Solvent Sockets, Solvent Spigots, BSP Threaded, HDPE Fusion Spigots



Inch Solvent Cement Sockets

EPDM Seals			
	3/8	12.1940	28.33
	1/2	12.0278	29.88
	3/4	12.2076	35.70
	1	12.2072	42.27
	1 1/4	12.2080	52.08
	1 1/2	12.1109	62.50
	2	12.1110	84.72
	2 1/2	12.1098	176.91
	3	12.1900	218.26
	4	12.2805	290.24

Inch Solvent Cement Sockets

FPM Seals			
	3/8	12.2651	34.29
	1/2	12.2652	35.70
	3/4	12.2653	43.04
	1	12.2654	51.16
	1 1/4	12.2655	62.34
	1 1/2	12.2656	74.28
	2	12.2657	98.01
	2 1/2	12.1099	203.70
	3	12.2648	258.84
	4	12.4569	342.32

MM Solvent Cement Sockets

EPDM Seals			
	16	12.1069	28.33
	20	12.1088	29.88
	25	12.1090	35.70
	32	12.1092	42.27
	40	12.1094	52.08
	50	12.1041	62.50
	63	12.1042	84.72
	75	12.1098	176.91
	90	12.1043	218.26
	110	12.2291	290.24

MM Solvent Cement Sockets

FPM Seals			
	16	12.1087	34.29
	20	12.1089	35.70
	25	12.1091	43.04
	32	12.1093	51.16
	40	12.1095	62.34
	50	12.1096	74.28
	63	12.1097	98.01
	75	12.1099	203.70
	90	12.1100	258.84
	110	12.2388	342.32

MM Solvent Cement Spigots

EPDM Seals			
	16	12.1204	28.33
	20	12.1208	29.88
	25	12.1210	35.70
	32	12.1212	42.27
	40	12.1214	52.08
	50	12.1216	62.50
	63	12.1206	84.72
	75	12.1218	176.13
	90	12.1220	218.26

MM Solvent Cement Spigots

FPM Seals			
	16	12.1205	34.29
	20	12.1209	35.70
	25	12.1211	43.04
	32	12.1213	51.16
	40	12.1215	62.34
	50	12.1217	74.28
	63	12.1207	98.01
	75	12.1219	203.70
	90	12.1221	258.84

BSP Female Threaded

EPDM Seals			
	3/8	12.1186	31.41
	1/2	12.1188	32.94
	3/4	12.1190	39.53
	1	12.1192	46.56
	1 1/4	12.1194	57.27
	1 1/2	12.1196	69.24
	2	12.1198	94.03
	2 1/2	12.1200	192.97
	3	12.1202	243.54

BSP Female Threaded

FPM Seals			
	3/8	12.1187	37.38
	1/2	12.1189	38.90
	3/4	12.1191	47.18
	1	12.1193	55.77
	1 1/4	12.1195	68.01
	1 1/2	12.1197	81.48
	2	12.1199	107.81
	2 1/2	12.1201	220.56
	3	12.1203	284.11



Optional End Connections

The S4 check valve is also available with the following end connections:

- PVC-U Flanges
- PVC-U Solvent Cement Spigots
- PE Fusion Spigots

Praher Type S4 Check (Non-Return) Valve - PTFE Sleeved Spring

Description: In-line spring weighted cone check valve with PTFE sleeved spring

Mounting: In any position

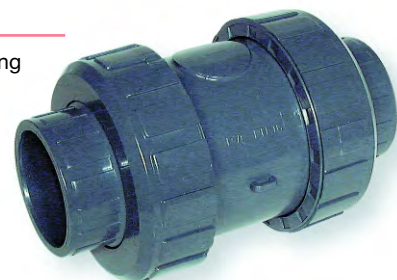
Maximum Fluid Pressure at 20°C: Sizes up to 2 1/2"/75mm - 16 bar; 3"/90mm - 10 bar; 4"/110mm - 6 bar

Fluid Temperature Range: 0°C-60°C

Construction:

Body: PVC-U **Seals:** EPDM or FPM **Spring:** Stainless Steel (PTFE Sleeved)

End Connections: Solvent Sockets, Solvent Spigots, BSP Threaded



MM Solvent Cement Sockets

EPDM Seals	Size	Part No.	Price
	16	12.1764	31.24
	20	12.1765	32.79
	25	12.1766	39.37
	32	12.1767	46.56
	40	12.1768	57.27
	50	12.1769	68.61
	63	12.1770	93.13
	75	12.1771	194.51
	90	12.1772	240.46
	110	12.2721	318.56

MM Solvent Cement Sockets

FPM Seals	Size	Part No.	Price
	16	12.2116	37.68
	20	12.2117	39.37
	25	12.2118	47.47
	32	12.2119	56.36
	40	12.2120	68.61
	50	12.2121	81.79
	63	12.2122	107.98
	75	12.2123	224.39
	90	12.2124	284.89
	110	12.2720	376.78

Inch Solvent Cement Sockets

EPDM Seals	Size	Part No.	Price
	3/8	12.1991	31.24
	1/2	12.2196	32.79
	3/4	12.2197	39.37
	1	12.2198	46.56
	1 1/4	12.2199	57.27
	1 1/2	12.2200	68.61
	2	12.1114	93.13
	2 1/2	12.1759	194.51
	3	12.1782	240.46
	4	12.2981	318.56

Inch Solvent Cement Sockets

FPM Seals	Size	Part No.	Price
	3/8	12.2643	37.68
	1/2	12.2154	39.37
	3/4	12.2179	47.47
	1	12.2180	56.36
	1 1/4	12.2181	68.61
	1 1/2	12.2182	81.79
	2	12.2183	107.98
	2 1/2	12.2249	224.39
	3	12.2250	284.89
	4	12.2251	376.78

Other end connections on request.

Durapipe UC Double Union Ball Check Valve

Description: In-line ball check valve

Mounting: Vertical

Maximum Fluid Pressure at 20°C: 16 bar

Fluid Temperature Range: 0°C - 60°C

Construction:

Body: PVC-U

Seals: EPDM or FPM

End Connections: Solvent sockets or BSP Female Threaded



Inch Solvent Cement Sockets

EPDM Seals	Size	Part No.	Price
	1/2	H0 UCE 102	57.29
	3/4	H0 UCE 103	65.44
	1	H0 UCE 104	70.49
	1 1/4	H0 UCE 105	83.91
	1 1/2	H0 UCE 106	87.07
	2	H0 UCE 107	148.75

MM Solvent Cement Sockets

EPDM Seals	Size	Part No.	Price
	20	H0 UCE 306	57.29
	25	H0 UCE 307	65.44
	32	H0 UCE 308	70.49
	40	H0 UCE 309	83.91
	50	H0 UCE 310	87.07
	63	H0 UCE 311	148.75

Inch Solvent Cement Sockets

FPM Seals	Size	Part No.	Price
	1/2	H0 UCF 102	75.01
	3/4	H0 UCF 103	80.23
	1	H0 UCF 104	87.10
	1 1/4	H0 UCF 105	120.52
	1 1/2	H0 UCF 106	131.73
	2	H0 UCF 107	177.92

MM Solvent Cement Sockets

FPM Seals	Size	Part No.	Price
	20	H0 UCF 306	75.01
	25	H0 UCF 307	80.23
	32	H0 UCF 308	87.10
	40	H0 UCF 309	120.52
	50	H0 UCF 310	131.73
	63	H0 UCF 311	177.92



Spears True Union 2000 Industrial Ball Check Valve

Description: In-line ball check valve

Mounting: Vertical

Maximum Fluid Pressure at 20°C: Sizes 1/2" to 2" - 16 bar; sizes 2 1/2" to 6" - 10 bar

All sizes flanged - 10 bar

Fluid Temperature Range: 0°C-60°C

Construction:

Body: PVC-U

Seals: EPDM or FPM

End Connections: Solvent Sockets, Solvent Spigots,

NPT Female Threaded, Reinforced NPT Female Threaded, Flanged

Features: Sizes 1/2" to 2" Solvent Socket valves also include NPT Female Threaded end connections

All valves are assembled with Silicon-free, water soluble lubricant



Inch Solvent Cement Sockets

EPDM Seals

1/2	4529- 005	32.02
3/4	4529- 007	38.13
1	4529- 010	45.35
1 1/4	4529- 012	66.32
1 1/2	4529- 015	76.13
2	4529- 020	103.85
2 1/2	4522- 025	251.95
3	4522- 030	251.95
4	4522- 040	472.51
6	4522- 060	1856.29

Inch Solvent Cement Sockets

FPM Seals

1/2	4539- 005	36.15
3/4	4539- 007	40.29
1	4539- 010	50.54
1 1/4	4539- 012	74.28
1 1/2	4539- 015	84.40
2	4539- 020	115.48
2 1/2	4532- 025	268.03
3	4532- 030	268.03
4	4532- 040	497.75
6	4532- 060	2056.94

Inch Solvent Cement Spigots

EPDM Seals

1/2	4527- 005	32.02
3/4	4527- 007	38.13
1	4527- 010	45.35
1 1/4	4527- 012	66.32
1 1/2	4527- 015	76.13
2	4527- 020	103.85
2 1/2	4527- 025	251.95
3	4527- 030	251.95
4	4527- 040	472.51
6	4527- 060	1856.29

Inch Solvent Cement Spigots

FPM Seals

1/2	4537- 005	36.15
3/4	4537- 007	40.29
1	4537- 010	50.54
1 1/4	4537- 012	74.28
1 1/2	4537- 015	84.40
2	4537- 020	115.48
2 1/2	4537- 025	268.03
3	4537- 030	268.03
4	4537- 040	497.75
6	4537- 060	2056.94

Flanged ANSI 150

EPDM Seals

1/2	4523- 005	45.20
3/4	4523- 007	54.52
1	4523- 010	64.63
1 1/4	4523- 012	79.95
1 1/2	4523- 015	110.27
2	4523- 020	156.23
2 1/2	4523- 025	322.40
3	4523- 030	451.06
4	4523- 040	610.34
6	4523- 060	2922.28

Flanged ANSI 150

FPM Seals

1/2	4533- 005	56.68
3/4	4533- 007	67.85
1	4533- 010	79.02
1 1/4	4533- 012	103.23
1 1/2	4533- 015	119.77
2	4533- 020	159.30
2 1/2	4533- 025	375.24
3	4533- 030	524.58
4	4533- 040	708.38
6	4533- 060	3390.29

Spears Foot Valve Screen

Description: Foot valve screen for Spears ball check valve

Fluid Temperature Range: 0°C-60°C

Construction:

Body: PVC-U

End Connections: Solvent Spigot



Inch Solvent Cement Spigots

1/2	FVS- 005	39.07
3/4	FVS- 007	46.26
1	FVS- 010	56.36
1 1/4	FVS- 012	81.94
1 1/2	FVS- 015	86.38
2	FVS- 020	97.41
2 1/2	FVS- 025	134.02
3	FVS- 030	137.83
4	FVS- 040	163.13

Praher Type S4 Air Release Valve

Description: In-line air release valve

Mounting: In a vertical position

Maximum Fluid Pressure at 20°C: Sizes up to 2 1/2"/75mm - 16 bar;

3"/90mm - 10 bar; 4"/110mm - 6 bar

Fluid Temperature Range: 0°C-60°C

Construction:

Body: PVC-U

Seals: EPDM or FPM

Cone: PVC-U

End Connections: Solvent Sockets, Solvent Spigots, BSP Threaded, HDPE Fusion Spigots



Inch Solvent Cement Sockets

EPDM Seals			
	3/8	12.0303	24.36
	1/2	12.2701	25.90
	3/4	12.2130	27.73
	1	12.2131	31.55
	1 1/4	12.2132	42.58
	1 1/2	12.2831	58.35
	2	12.2011	81.19
	2 1/2	12.1276	172.30
	3	12.0099	211.36
	4	12.2999	282.57

Inch Solvent Cement Sockets

FPM Seals			
	3/8	12.0803	30.32
	1/2	12.0804	31.86
	3/4	12.0805	35.21
	1	12.0806	40.45
	1 1/4	12.0807	53.00
	1 1/2	12.0808	70.15
	2	12.0809	94.51
	2 1/2	12.1277	199.12
	3	12.0811	251.18
	4	12.0812	335.43

MM Solvent Cement Sockets

EPDM Seals			
	16	12.1262	24.36
	20	12.1264	25.90
	25	12.1266	27.73
	32	12.1268	31.55
	40	12.1270	42.58
	50	12.1272	58.35
	63	12.1274	81.19
	75	12.1276	172.30
	90	12.1278	211.36
	110	12.2391	282.57

MM Solvent Cement Sockets

FPM Seals			
	16	12.1263	30.32
	20	12.1265	31.86
	25	12.1267	35.21
	32	12.1269	40.45
	40	12.1271	53.00
	50	12.1273	70.15
	63	12.1275	94.51
	75	12.1277	199.12
	90	12.1279	251.18
	110	12.2392	335.43

MM Solvent Cement Spigots

EPDM Seals			
	16	12.1459	24.36
	20	12.1461	25.90
	25	12.1463	27.73
	32	12.1465	31.55
	40	12.1467	42.58
	50	12.1469	58.35
	63	12.1471	81.19
	75	12.1473	172.30
	90	12.1475	211.36

MM Solvent Cement Spigots

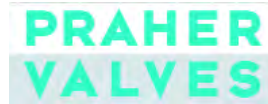
FPM Seals			
	16	12.1460	30.32
	20	12.1462	31.86
	25	12.1464	35.21
	32	12.1466	40.45
	40	12.1468	53.00
	50	12.1470	70.15
	63	12.1472	94.51
	75	12.1474	199.12
	90	12.1476	251.18

BSP Female Threaded

EPDM Seals			
	3/8	12.1280	27.41
	1/2	12.1282	28.79
	3/4	12.1284	31.41
	1	12.1286	35.54
	1 1/4	12.1288	47.47
	1 1/2	12.1290	64.94
	2	12.1292	90.37
	2 1/2	12.1294	188.38
	3	12.1296	235.88

BSP Female Threaded

FPM Seals			
	3/8	12.1281	33.56
	1/2	12.1283	34.93
	3/4	12.1285	38.90
	1	12.1287	44.72
	1 1/4	12.1289	58.19
	1 1/2	12.1291	77.05
	2	12.1293	104.16
	2 1/2	12.1295	216.74
	3	12.1297	277.22



Praher Type S4 Foot Valve

Description: In-line foot valve with screen

Mounting: In a vertical position

Maximum Fluid Pressure at 20°C: Sizes up to 2 1/2"/75mm - 16 bar;
3"/90mm - 10 bar; 4"/110mm - 6 bar

Fluid Temperature Range: 0°C-60°C

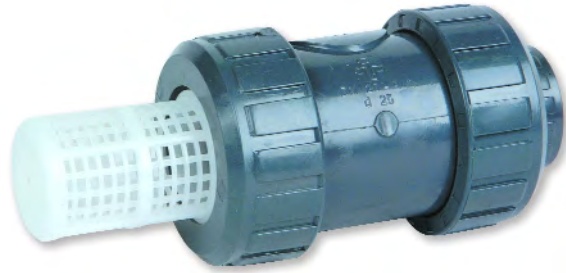
Construction:

Body: PVC-U

Seals: EPDM or FPM

Cone: PVC-U (weighted)

End Connections: Solvent Sockets, Solvent Spigots, BSP Threaded, HDPE Spigots



Inch Solvent Cement Sockets

EPDM Seals

3/8	12.2873	26.96
1/2	12.2109	28.33
3/4	12.2110	32.79
1	12.2668	37.22
1 1/4	12.2129	47.64
1 1/2	12.1353	60.19
2	12.1360	83.01
2 1/2	12.1367	174.60
3	12.2105	215.19
4	12.2669	286.41

Inch Solvent Cement Sockets

FPM Seals

3/8	12.2874	32.79
1/2	12.1032	34.29
3/4	12.1033	40.12
1	12.1034	46.12
1 1/4	12.1035	58.05
1 1/2	12.1036	71.98
2	12.1037	96.34
2 1/2	12.1368	201.42
3	12.1039	255.03
4	12.1040	339.25

MM Solvent Cement Sockets

EPDM Seals

16	12.1323	26.96
20	12.1329	28.33
25	12.1335	32.79
32	12.1341	37.22
40	12.1347	47.64
50	12.1354	60.19
63	12.1361	83.01
75	12.1367	174.60
90	12.1373	215.19
110	12.2389	286.41

MM Solvent Cement Sockets

FPM Seals

16	12.1324	32.79
20	12.1330	34.29
25	12.1336	40.12
32	12.1342	46.12
40	12.1348	58.05
50	12.1355	71.98
63	12.1362	96.34
75	12.1368	201.42
90	12.1374	255.03
110	12.2390	339.25

MM Solvent Cement Spigots

EPDM Seals

16	12.1847	26.96
20	12.1849	28.33
25	12.1851	32.79
32	12.1853	37.22
40	12.1855	47.64
50	12.1858	60.19
63	12.1860	83.01
75	12.1862	174.60
90	12.1864	215.19

MM Solvent Cement Spigots

FPM Seals

16	12.1848	32.79
20	12.1850	34.29
25	12.1852	40.12
32	12.1854	46.12
40	12.1857	58.05
50	12.1859	71.98
63	12.1861	96.34
75	12.1863	201.42
90	12.1865	255.03

BSP Female Threaded

EPDM Seals

3/8	12.1321	29.88
1/2	12.1327	31.41
3/4	12.1333	36.45
1	12.1339	41.36
1 1/4	12.1345	52.69
1 1/2	12.1351	66.78
2	12.1358	92.21
2 1/2	12.1365	191.46
3	12.1371	239.71

BSP Female Threaded

FPM Seals

3/8	12.1322	36.00
1/2	12.1328	36.92
3/4	12.1334	44.11
1	12.1340	50.54
1 1/4	12.1346	63.42
1 1/2	12.1352	79.02
2	12.1359	105.98
2 1/2	12.1366	219.02
3	12.1372	281.06

manual valves

Praher K4 Check Valve

NEW



Visual Position Indicator



Universal Drilling



85° Max Opening

Materials

Body - PVCu
Disc - PVCu
Seals - EPDM or FPM

Sizes

2 1/2" - 12"

Pressure Rating

PN10

Connections

Between flanges, universal drilled

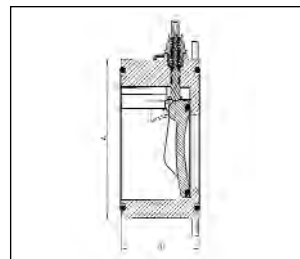
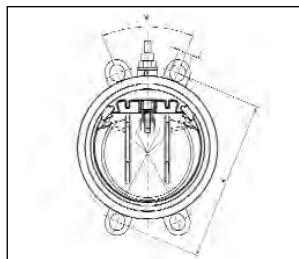
Features

- Excellent Flow Rates
- Wide opening (85°)
- Low pressure drop
- Visual open-closed indicator
- Spring return
- All sizes PN10 rated
- Universal drilling - can be used with DIN, ANSI, BS and JIS flanges

Tightening torque for flange connections

DN	65	80	100	150	200	250	300
Nm	15	18	20	40	55	60	65

Valve Dimensions



DN	A	B	C	K	W
65	115	63	20	139-145	90°
80	128	71	20	150-160	45°
100	155	80	20	175-191	45°
150	212	106	24	234-242	45°
200	264	140	24	290-299	45°
250	325	140	27	350-362	30°
300	372	181	27	400-432	30°

Dimensions in mm

Praher Type K4 Check Valve

Description: Lug style check valve with universal drilling for mounting between flanges. (DIN, ANSI & BS)

Construction:

Body: PVC-U

Seals: EPDM or FPM

Pressure rating: PN10

Size: 2"/75mm - 10"/250mm



Features

- Excellent Flow Rates
- Wide opening (85°)
- Low pressure drop
- Visual open-closed indicator
- Spring return
- All sizes PN10 rated
- Universal drilling - can be used with DIN, ANSI, BS and JIS flanges

EPDM Seals			
2 1/2"/75	12.5804	253.94	
3"/90	12.5805	271.95	
4"/110	12.5806	324.38	
6"/160	12.5807	434.42	
8"/225	12.5808	816.92	
10"/250	12.5809	1287.68	

FPM Seals			
2 1/2"/75	12.5811	289.98	
3"/90	12.5812	316.73	
4"/110	12.5813	378.99	
6"/160	12.5814	510.05	
8"/225	12.5815	895.55	
10"/250	12.5816	1374.02	

Kv Value Table		
Pressure Lost	1 bar	0.001 bar
DN 80	2958 l/min	94 l/min
DN 100	5633 l/min	178 l/min
DN 150	12466 l/min	394 l/min
DN 200	21166 l/min	699 l/min

Pressure loss based on maximum opening of 85%

Praher Type S4 Wafer Check Valve

Description: Wafer style flap check valve

Mounting: In any position, between flanges to BS4504 EN1072 PN10. Optional spring return for mounting in horizontal position or for pulsating flow

Maximum Fluid Pressure at 20°C: 5 bar

Fluid Temperature Range: 0°C-60°C

Construction:

Body: PVC-U

Seals: EPDM or FPM

Spring: Stainless Steel

End Connections: Flange mounted (flanges not included)



No Spring Return

EPDM Seals	Size	Code	Price
	1 1/4"/40	07.0001	76.74
	1 1/2"/50	07.0196	84.23
	2"/63	07.0036	98.63
	2 1/2"/75	07.0046	105.37
	3"/90	07.0056	111.05
	4"/110	07.0066	130.95
	5"/140	07.0076	156.99
	6"/160	07.0086	222.84
	8"/225	07.0096	461.00
	10"/280	07.0106	663.18
	12"/315	07.0116	888.32

No Spring Return

FPM Seals	Size	Code	Price
	1 1/4"/40	07.0002	113.04
	1 1/2"/50	07.0197	117.02
	2"/63	07.0038	137.25
	2 1/2"/75	07.0048	141.37
	3"/90	07.0058	163.13
	4"/110	07.0068	204.47
	5"/140	07.0078	241.99
	6"/160	07.0088	307.09
	8"/225	07.0098	562.10
	10"/280	07.0108	784.19
	12"/315	07.0118	1004.72

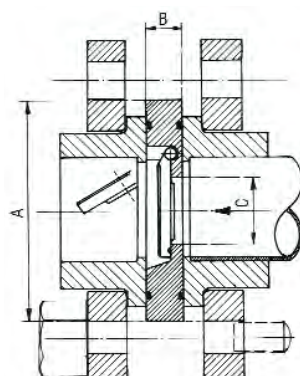
Stainless Steel Spring Return

EPDM Seals	Size	Code	Price
	1 1/4"/40	07.0003	117.94
	1 1/2"/50	07.0198	127.89
	2"/63	07.0037	140.28
	2 1/2"/75	07.0047	187.63
	3"/90	07.0057	200.63
	4"/110	07.0067	232.81
	5"/140	07.0077	264.97
	6"/160	07.0087	317.81
	8"/225	07.0097	591.98
	10"/280	07.0107	843.91
	12"/315	07.0117	1113.48

Stainless Steel Spring Return

FPM Seals	Size	Code	Price
	1 1/4"/40	07.0004	193.76
	1 1/2"/50	07.0199	198.35
	2"/63	07.0039	209.07
	2 1/2"/75	07.0049	225.14
	3"/90	07.0059	255.03
	4"/110	07.0069	302.49
	5"/140	07.0079	353.03
	6"/160	07.0089	427.32
	8"/225	07.0099	629.47
	10"/280	07.0109	934.26
	12"/315	07.0119	1228.34

Dimensions (mm)



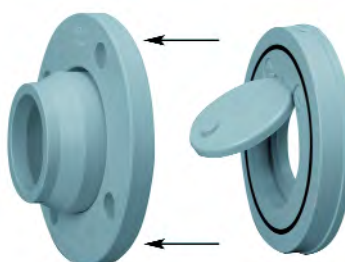
D	DN	A	B	C
63	50	109	18	32
75	65	129	20	40
90	80	144	20	52
110	100	164	23	70
140	125	195	23	92
160	150	220	26	112
225	200	275	35	150
280	250	330	40	190
315	300	380	45	216

Installation Adaptor for Wafer Check Valve



Flange Mounted Wafer Check Valves

Occasionally the flange mounted wafer check valve will have restricted opening if it is mounted in a heavy wall pipe. For all installations in heavy wall pipes we recommend the use of the additional installation adaptor to ensure that the valve will open fully.



Size	Code	Price
2"/63	07.2202	91.29
2 1/2"/75	07.2203	106.90
3"/90	07.2204	115.78
4"/110	07.2205	165.41
5"/140	07.2206	200.63
6"/160	07.2207	218.26
8"/225	07.2208	503.91
10"/280	07.2209	828.58
12"/315	07.2210	1493.32

Hidroten Wafer Check Valve

Description: Wafer style flap check valve

Mounting: In any position, between flanges to BS 4504 EN1072 PN10

Spring return version for mounting in horizontal position or for pulsating flow

Maximum Fluid Pressure at 20°C: 16 bar

Fluid Temperature Range: 0°C-60°C

Construction:

Body: Polypropylene - Glass Fibre Reinforced

Diaphragm: EPDM

End Connections: Flange mounted (flanges not included)

No Spring Return

EPDM Seals			
	90	13002	144.58
	110	13003	161.60
	125	13004	189.92
	140	13005	224.39
	160	13006	284.89
	200	13007	379.83
	250	13008	454.06
	315	13009	564.62

Spring Return

EPDM Seals			
	90	13012	173.83
	110	13013	193.76
	125	13014	226.67
	140	13015	268.81
	160	13016	332.35
	200	13017	434.21

Spring Return and Position Indicator

EPDM Seals			
	90	13022	206.00
	110	13023	223.61
	125	13024	258.06
	140	13025	316.29
	160	13026	379.83
	200	13027	483.23
	250	13028	559.74
	315	13029	671.10



Hidroten Clamp Union Check Valve

Description: Swing Check Valve with Clamp Union Connections

Mounting: In any position

Maximum Fluid Pressure at 20°C: Sizes 2"/63mm to 6"/160mm 10 bar

Fluid Temperature Range: 0°C-60°C

Construction:

Body and Disc: Polypropylene - Glass Fibre Reinforced

Seals: EPDM

End Connections: Clamp Unions in PVC-U or PE



Inch Clamp Union Connections

EPDM Seals			
	3	15120	215.00
	4	15121	235.85
	5	15023	523.17
	6	15124	579.04

MM Clamp Union Connections

EPDM Seals			
	90	15020	215.00
	110	15021	235.85
	125	15022	496.57
	140	15023	523.17
	160	15024	579.04

Spears Utility Swing Check Valve

Description: In-line swing (flap) check valve
Mounting: Horizontal or vertical (up-flow)
Maximum Fluid Pressure at 20°C: All sizes - 10 bar
Fluid Temperature Range: 0°C-60°C
Construction:
Body: White or Clear (transparent) PVC-U
Seat: EPDM
End Connections: Solvent Sockets, Solvent Cement Unions, NPT Female Threaded, Reinforced NPT Female Threaded
Features: Angled seat and weighted flap for low pressure sealing



New - Union ends

Inch Solvent Cement Sockets

White PVC-U
EPDM Seat

1/2	S1520- 05	17.48
3/4	S1520- 07	17.48
1	S1520- 10	18.23
1 1/4	S1520- 12	18.85
1 1/2	S1520- 15	19.90
2	S1520- 20	30.93
2 1/2	S1520- 25	51.46
3	S1520- 30	57.27
4	S1520- 40	81.03

Inch Solvent Cement Sockets

Clear PVC-U
EPDM Seat

1/2	S1520C- 05	22.97
3/4	S1520C- 07	23.44
1	S1520C- 10	23.89
1 1/4	S1520C- 12	24.97
1 1/2	S1520C- 15	27.27
2	S1520C- 20	39.07
2 1/2	S1520C- 25	65.09
3	S1520C- 30	72.44
4	S1520C- 40	97.41

Inch Solvent Cement Unions

White PVC-U
EPDM Seat

1/2	S1720- 05	16.85
3/4	S1720- 07	17.32
1	S1720- 10	20.68
1 1/4	S1720- 12	21.76
1 1/2	S1720- 15	23.89
2	S1720- 20	35.84
2 1/2	S1720- 25	59.59
3	S1720- 30	76.13
4	S1720- 40	102.79

Inch Solvent Cement Unions

Clear PVC-U
EPDM Seat

1/2	S1720C- 05	19.90
3/4	S1720C- 07	20.39
1	S1720C- 10	24.36
1 1/4	S1720C- 12	25.59
1 1/2	S1720C- 15	31.24
2	S1720C- 20	43.81
2 1/2	S1720C- 25	71.84
3	S1720C- 30	82.71
4	S1720C- 40	110.27

NPT Female Threaded

White PVC-U
EPDM Seat

1/2	S1520- 05F	17.48
3/4	S1520- 07F	17.48
1	S1520- 10F	18.23
1 1/4	S1520- 12F	18.85
1 1/2	S1520- 15F	19.90
2	S1520- 20F	30.93
2 1/2	S1520- 25F	51.46
3	S1520- 30F	57.27
4	S1520- 40F	81.03

NPT Female Threaded

Clear PVC-U
EPDM Seat

1/2	S1520C- 05F	22.97
3/4	S1520C- 07F	23.44
1	S1520C- 10F	23.89
1 1/4	S1520C- 12F	24.97
1 1/2	S1520C- 15F	27.27
2	S1520C- 20F	39.07
2 1/2	S1520C- 25F	65.09
3	S1520C- 30F	72.44
4	S1520C- 40F	97.41

NPT Female Threaded

Stainless Steel Reinforced

White PVC-U
EPDM Seat

1/2	S1520- 05F SR	20.22
3/4	S1520- 07F SR	20.22
1	S1520- 10F SR	22.23
1 1/4	S1520- 12F SR	27.73
1 1/2	S1520- 15F SR	35.21
2	S1520- 20F SR	47.47
2 1/2	S1520- 25F SR	56.98
3	S1520- 30F SR	101.40
4	S1520- 40F SR	126.82

NPT Female Threaded

Stainless Steel Reinforced

Clear PVC-U
EPDM Seat

1/2	S1520C- 05F SR	25.74
3/4	S1520C- 07F SR	27.41
1	S1520C- 10F SR	29.42
1 1/4	S1520C- 12F SR	33.99
1 1/2	S1520C- 15F SR	42.44
2	S1520C- 20F SR	55.61
2 1/2	S1520C- 25F SR	90.83
3	S1520C- 30F SR	116.57
4	S1520C- 40F SR	143.20

Spears Utility Spring Check Valve

Description: In-line spring assisted (flap) check valve

Mounting: Horizontal or vertical (up-flow)

Maximum Fluid Pressure at 20°C: All sizes - 10 bar

Fluid Temperature Range: 0°C-60°C

Construction:

Body: White or Clear (transparent) PVC-U

Seat: EPDM

End Connections: Solvent Sockets, Solvent Cement Unions, NPT Female Threaded, Reinforced NPT Female Threaded

Features: Body design allows maximum flow. Quick response and positive shut-off.



Inch Solvent Cement Sockets

White PVC-U
EPDM Seat

1/2	S1580- 05	33.25
3/4	S1580- 07	37.62
1	S1580- 10	39.23
1 1/4	S1580- 12	40.83
1 1/2	S1580- 15	43.46
2	S1580- 20	45.51
2 1/2	S1580- 25	80.80
3	S1580- 30	84.31
4	S1580- 40	119.60

Inch Solvent Cement Sockets

Clear PVC-U
EPDM Seat

1/2	S1580C- 05	34.27
3/4	S1580C- 07	38.80
1	S1580C- 10	40.43
1 1/4	S1580C- 12	42.15
1 1/2	S1580C- 15	44.64
2	S1580C- 20	46.24
2 1/2	S1580C- 25	83.29
3	S1580C- 30	86.79
4	S1580C- 40	123.27

Inch Solvent Cement Unions

White PVC-U
EPDM Seat

1/2	S1780- 05	44.19
3/4	S1780- 07	50.17
1	S1780- 10	52.23
1 1/4	S1780- 12	54.41
1 1/2	S1780- 15	58.05
2	S1780- 20	60.38
2 1/2	S1780- 25	107.79
3	S1780- 30	112.32
4	S1780- 40	159.73

Inch Solvent Cement Unions

Clear PVC-U
EPDM Seat

1/2	S1780C- 05	45.65
3/4	S1780C- 07	51.78
1	S1780C- 10	53.83
1 1/4	S1780C- 12	56.16
1 1/2	S1780C- 15	59.51
2	S1780C- 20	61.27
2 1/2	S1780C- 25	111.01
3	S1780C- 30	115.82
4	S1780C- 40	164.82

NPT Female Threaded

White PVC-U
EPDM Seat

1/2	S1580- 05F	33.25
3/4	S1580- 07F	37.62
1	S1580- 10F	39.23
1 1/4	S1580- 12F	40.83
1 1/2	S1580- 15F	43.46
2	S1580- 20F	45.51
2 1/2	S1580- 25F	80.80
3	S1580- 30F	84.31
4	S1580- 40F	119.60

NPT Female Threaded

Clear PVC-U
EPDM Seat

1/2	S1580C- 05F	34.27
3/4	S1580C- 07F	38.80
1	S1580C- 10F	40.43
1 1/4	S1580C- 12F	42.15
1 1/2	S1580C- 15F	44.64
2	S1580C- 20F	46.24
2 1/2	S1580C- 25F	83.29
3	S1580C- 30F	86.79
4	S1580C- 40F	123.27

NPT Female Threaded

Stainless Steel Reinforced

White PVC-U
EPDM Seat

1/2	S1580- 05F SR	36.03
3/4	S1580- 07F SR	41.71
1	S1580- 10F SR	44.79
1 1/4	S1580- 12F SR	49.74
1 1/2	S1580- 15F SR	58.78
2	S1580- 20F SR	62.14
2 1/2	S1580- 25F SR	106.49
3	S1580- 30F SR	128.66
4	S1580- 40F SR	165.55

NPT Female Threaded

Stainless Steel Reinforced

Clear PVC-U
EPDM Seat

1/2	S1580C- 05F SR	37.20
3/4	S1580C- 07F SR	42.89
1	S1580C- 10F SR	45.94
1 1/4	S1580C- 12F SR	51.06
1 1/2	S1580C- 15F SR	59.94
2	S1580C- 20F SR	62.87
2 1/2	S1580C- 25F SR	108.97
3	S1580C- 30F SR	131.13
4	S1580C- 40F SR	169.21