



Tee 90°



Size	Code	Price
16	38 122 305	3.54
20	38 122 306	3.90
25	38 122 307	4.23
32	38 122 308	5.58
40	38 122 309	8.45
50	38 122 310	12.88
63	38 122 311	21.26
75	38 122 312	49.12
90	38 122 313	82.92
110	38 122 314	133.64
160	38 122 317	246.38

Reducing Tee 90°



Size	Code	Price
25x20	38 124 415	7.41
32x20	38 124 418	12.03
32x25	38 124 419	12.03
40x20	38 124 421	19.64
40x25	38 124 422	19.64
50x25	38 124 425	25.76
50x32	38 124 426	25.76
63x25	38 124 429	39.95
63x32	38 124 430	39.95
75x25	38 124 434	72.25
90x25	38 124 439	106.95
110x25	38 124 445	144.71

Elbow 90°



Size	Code	Price
16	38 115 305	2.71
20	38 115 306	3.06
25	38 115 307	3.40
32	38 115 308	4.23
40	38 115 309	7.63
50	38 115 310	10.01
63	38 115 311	16.04
75	38 115 312	37.20
90	38 115 313	61.35
110	38 115 314	99.82
160	38 115 317	209.06

Elbow 45°



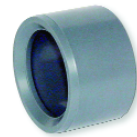
Size	Code	Price
20	38 119 306	4.75
25	38 119 307	5.09
32	38 119 308	6.59
40	38 119 309	9.48
50	38 119 310	11.47
63	38 119 311	17.57
75	38 119 312	40.60
90	38 119 313	60.57
110	38 119 314	98.23
160	38 119 317	253.16

Socket



Size	Code	Price
16	38 100 305	2.52
20	38 100 306	2.52
25	38 100 307	2.71
32	38 100 308	3.40
40	38 100 309	5.09
50	38 100 310	6.09
63	38 100 311	10.14
75	38 100 312	23.65
90	38 100 313	40.60
110	38 100 314	62.65
160	38 119 317	149.69

Reducing Bush



Size	Code	Price
20x16	38 109 412	2.03
25x20	38 109 415	2.52
32x20	38 109 418	3.73
32x25	38 109 419	3.73
40x20	38 109 421	4.04
40x25	38 109 422	4.04
40x32	38 109 423	4.04
50x32	38 109 426	5.09
50x40	38 109 427	5.09
63x32	38 109 430	6.78
63x40	38 109 431	6.78
63x50	38 109 432	6.78
75x50	38 109 437	10.82
75x63	38 109 438	10.82
90x50	38 109 442	20.32
90x63	38 109 443	20.32
90x75	38 109 444	20.32
110x63	38 109 449	28.47
110x75	38 109 450	28.47
110x90	38 109 451	28.47
160x110	38 109 474	69.62

Union

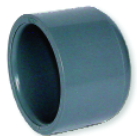
EPDM



Size	Code	Price
16	38 205 305	11.88
20	38 205 306	13.19
25	38 205 307	14.94
32	38 205 308	20.85
40	38 205 309	24.67
50	38 205 310	34.69
63	38 205 311	54.89

FPM available on request

Cap



Size	Code	Price
20	38 140 306	2.52
25	38 140 307	3.40
32	38 140 308	5.09
40	38 140 309	7.12
50	38 140 310	10.14
63	38 140 311	13.88
75	38 140 312	34.69
90	38 140 313	34.69
110	38 140 314	51.50

adaptor fittings mm sizes



Tee 90°

Plain Socket x BSP Female Thread

Size	Code	Price
16x ³ / ₈	38 121 602	4.92
16x ¹ / ₂	38 121 305	4.92
20x ¹ / ₂	38 121 306	6.11
25x ³ / ₄	38 121 307	7.52
32x1	38 121 308	11.77
40x1 ¹ / ₄	38 121 309	20.42
50x1 ¹ / ₂	38 121 310	26.88
63x2	38 121 311	42.55

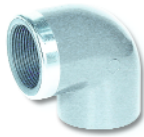


Socket Union

Plain Socket x BSP Female Thread

Size	Code	Price
20x ¹ / ₂	38 202 306	24.00
25x ³ / ₄	38 202 307	26.41
32x1	38 202 308	32.53
40x1 ¹ / ₄	38 202 309	38.85
50x1 ¹ / ₂	38 202 310	54.12
63x2	38 202 311	74.00

EPDM seals
FPM available to order



Elbow 90°

Plain Socket x BSP Female Thread

Size	Code	Price
16x ³ / ₈	38 178 602	6.55
16x ¹ / ₂	38 178 305	6.55
20x ¹ / ₂	38 178 306	11.16
25x ³ / ₄	38 178 307	12.24
32x1	38 178 308	14.52
40x1 ¹ / ₄	38 178 309	24.00
50x1 ¹ / ₂	38 178 310	34.15
63x2	38 178 311	46.05



Union

Plain Socket x Brass BSP Male

Size	Code	Price
16x ³ / ₈	38 217 305	17.25
20x ¹ / ₂	38 217 306	21.73
25x ³ / ₄	38 217 307	27.08
32x1	38 217 308	31.52
40x1 ¹ / ₄	38 217 309	43.91
50x1 ¹ / ₂	38 217 310	53.48
63x2	38 217 311	67.65



Socket

Plain Socket x BSP Female Thread

Size	Code	Price
16x ³ / ₈	38 103 602	7.30
20x ¹ / ₂	38 103 306	9.82
25x ³ / ₄	38 103 307	11.38
32x1	38 103 308	14.94
40x1 ¹ / ₄	38 103 309	18.32
50x1 ¹ / ₂	38 103 310	24.67
63x2	38 103 311	29.92



Union

Plain Socket x Brass BSP Female

Size	Code	Price
16x ³ / ₈	38 216 305	17.91
20x ¹ / ₂	38 216 306	22.78
25x ³ / ₄	38 216 307	28.47
32x1	38 216 308	34.48
40x1 ¹ / ₄	38 216 309	48.45
50x1 ¹ / ₂	38 216 310	60.02
63x2	38 216 311	67.65



Nipple

Plain Socket/Spigot x BSP Male

Size	Code	Price
16x20x ³ / ₈	38 171 332	4.41
20x25x ¹ / ₂	38 171 334	4.41
25x32x ³ / ₄	38 171 336	5.09
32x40x1	38 171 338	5.78
40x50x1 ¹ / ₄	38 171 340	7.44
50x63x1 ¹ / ₂	38 171 342	10.82
63x75x2	38 171 345	14.94

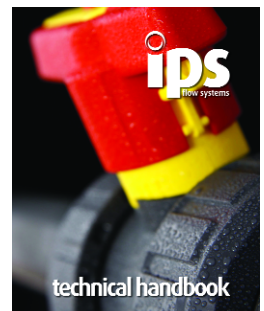
Technical Resources

Register online for our technical catalogue

www.ipsflowsystems.com

Or call our technical team on:

0800 975 79 71





Stub Flange

Serrated Face



Size	Code	Price
20	38 135 306	2.71
25	38 135 307	3.06
32	38 135 308	4.04
40	38 135 309	5.78
50	38 135 310	9.16
63	38 135 311	17.91
75	38 135 312	29.14
90	38 135 313	33.52
110	38 135 314	47.04
160	38 135 317	65.72



Backing Ring

Drilled to ANSI 150

Size	Code	Price
20	860-005-12A	6.47
25	860-007-12A	6.85
32	860-010-12A	8.13
40	860-012-12A	8.64
50	860-015-12A	9.48
63	860-020-11A	13.39
75	860-025-11A	18.33
90	860-030-11A	21.20
110	860-040-11A	27.11
160	860-060-13A	43.04

Backing Ring

Drilled to BS10 Table D

Size	Code	Price
20	860-005-12E	5.71
25	860-007-12E	6.47
32	860-010-12E	6.79
40	860-012-12E	7.00
50	860-015-12E	8.59
63	860-020-11E	12.18
75	860-025-11E	18.20
90	860-030-11E	18.50
110	860-040-11D	23.91
110	860-040-11E	23.91
160	860-060-13E	40.45



solvent cement

One Step Solvent



Size	Code	Price
1/2 litre	38 462 395	25.76

Eco-cleaner

Size	Code	Price
1/2 litre	03 457 395	11.89



Backing Ring

Drilled to BS4504 PN10/PN16

Size	Code	Price
20	860-005-12NP	6.47
25	860-007-12NP	6.85
32	860-010-12NP	7.98
40	860-012-12NP	8.64
50	860-015-12NP	9.48
63	860-020-11NP	13.39
75	860-025-11NP	18.33
90	860-030-11NP	21.20
110	860-040-11NP	27.11
160	860-060-13NP	42.25



How much Solvent Cement?

Estimate the number of joints per size, then use this table to calculate how much solvent cement to order.

Allow approximately one half the cement quantity in C-65 cleaner.

Detailed jointing instructions are available on request.

Pipe Size	Joints per litre
16-32	300
40-63	120
75-90	50
110-160	15

What size Brush?

It is important to use the correct size brush to apply solvent cement.

Pipe Size	Brush Size
10-32	8mm round
40-63	25 x 3mm flat
75-140	50 x 10mm flat
160	75 x 10mm flat



Brushes

Size	Code	Price
4mm round	L151/4R	1.14
8mm round	L151/8R	1.60
25 x 10mm flat	565/1	1.77
50 x 10mm flat	565/2	4.05
75 x 10mm flat	565/3	10.64



Stub Gasket

EPDM

Size	Code	Price
20	861-_-005	0.50
25	861-_-007	0.58
32	861-_-010	0.64
40	861-_-012	0.80
50	861-_-015	0.96
63	861-_-020	1.65
75	861-_-025	2.02
90	861-_-030	2.17
110	861-_-040	3.16
160	861-_-061	4.66

Complete code when ordering
Insert 'I' for NP10/16, 'A' for ANSI 150;
'E' for Table D/E

Stub Gasket

FPM

Size	Code	Price
20	862-_-005	2.34
25	862-_-007	3.48
32	862-_-010	4.59
40	862-_-012	7.36
50	862-_-015	8.05
63	862-_-020	10.60
75	862-_-025	15.34
90	862-_-030	20.01
110	862-_-040	34.14
160	862-_-061	56.98

Complete code when ordering
Insert 'I' for NP10/16, 'A' for ANSI 150;
'E' for Table D/E