

Durapipe PL-X is a high performance, fusion welded, multi layered PE pipe system, supplied as a Secondary Containment product range specifically designed for safe transfer of fuel based liquids.

All products are made from virgin polyethylene of high density (PE80 or PE100). The pipe is a composite material co-extruded with a polyamide liner using the latest extrusion technology, resulting in consistent and technically superior performance.

The tough outer layer of Polyethylene provides excellent resistance to abrasion, mechanical and physical abuse and is corrosion and maintenance free. The highly visible bonded polyamide bore layer completes the composite pipe structure ensuring permeation, low absorption and dimensional stability. Impermeable to diesel, fuel oils and their vapours, Durapipe PLX exceeds the requirements of international standards and provide complete security against fuel loss.

Additional security against accidental fuel loss is achieved by using Durapipe PLX pipe systems. durapipe PLX exceeds the industry requirements regarding secondary containment of pressurised fuel delivery systems and provides an opportunity for continuous interstitial monitoring.

This product range offers two different types of Secondary Containment systems;

Close Fit	Size ranges 32x40, 50x63, 63x75mm for below ground applications. Primary - Polyethylene black with orange polyamide bore layer. Secondary outer pipe - Polyethylene green with Polyethylene primary pipe. Fittings - Polyethylene black.
Pipe-In-Pipe	Size ranges 32x63, 50x90, 63x110, 90x160, 110x160mm for above and below ground applications. Primary - Polyethylene black with orange polyamide bore layer. Secondary outer pipe - Polyethylene black with Polyethylene primary pipe. Fittings - Polyethylene black.

Primary Pipe sizes 32-315mm available upon request.

Components in Durapipe PLX pipework systems must be welded by electrofusion techniques. Electrofusion technology works on the principle of an electric heating coil within the socket melting material within the fittings, causing the surface of the pipe to melt. When molten material cools it establishes a strong weld between the fitting and the pipe.

- Durapipe PLX performs to a maximum pressure rating of 10bar with full vacuum.
- Durapipe PLX Primary pipe has a maximum pressure rating of 10bar at 20°C
- Durapipe PLX Secondary pipe has a maximum pressure rating of 4bar at 20°C

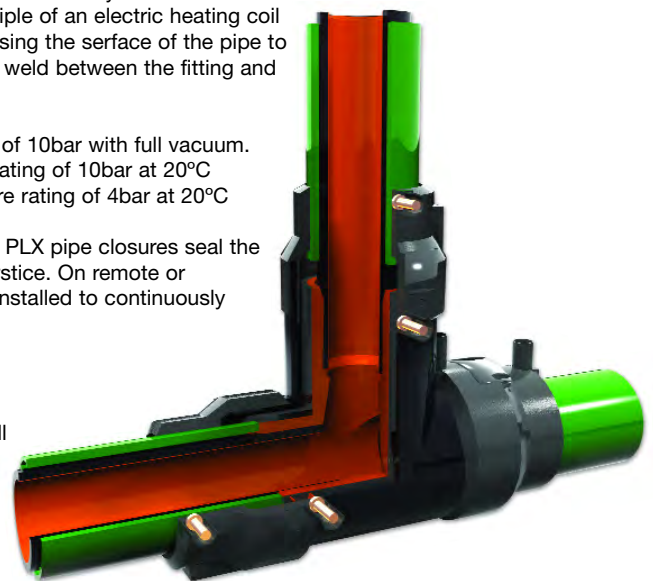
Durapipe PLX allows for Interstitial Monitoring. Durapipe PLX pipe closures seal the secondary pipes allowing for periodic testing of the interstice. On remote or unattended installations leak detection systems can be installed to continuously monitor for accidental losses and system damage.

Chemical resistance

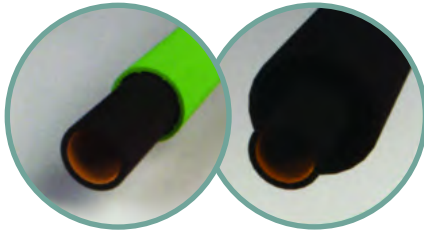
Durapipe PLX displays excellent chemical resistance to all fuels including, diesels, fuel oils and biofuels.

Weathering resistance

Durapipe PLX has a 30 year design life. PLX Secondary containment systems can be used above and below ground. Close-Fit systems can only be used in below ground applications due to no UV resistance. Pip-In-Pipe systems, which are supplied with black polyethylene secondary pipe are stabilised against the effects of UV radiation and may therefore safely be used outdoors.



Secondary Containment System

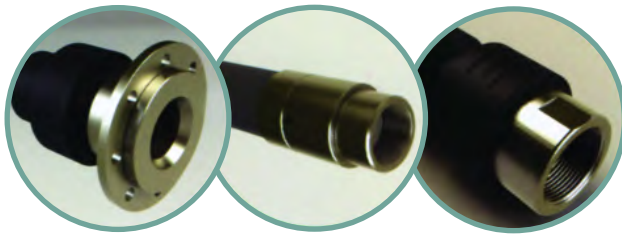


PLX Pipe

PLX Close-Fit:- Used for below ground sections of the system and available in straight lengths or coils.
PLX Pipe-in-Pipe:- Used for above ground fuel transfer applications.

Both pipes are co-extruded with a polyamide liner using the latest extrusion technology, resulting in consistent and technically superior performance.

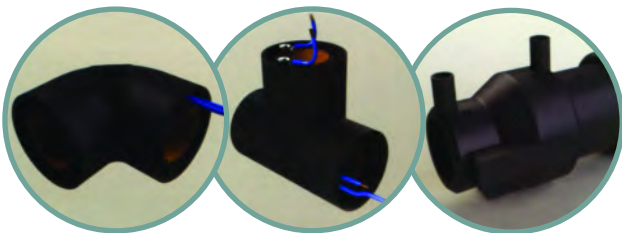
Size range from 32mm - 160mm



PLX Transition Fittings

PLX Transitions fittings ensure the safe and continuous flow of fuel when connecting to and from pumps, tanks and other metal threaded and flanged connections. Each transition fitting has been innovatively designed and manufactured using the highest quality PE and a wide range of metals. With the process of installation in mind; each fitting is developed to save time and costs during the installation process. All products are available in Secondary Containment.

Size range from 32mm - 160mm



PLX Electrofusion and Spigot Fittings

The PLX fittings range contains a wide range of couplers, elbows, tee's and closures, enabling interstitial monitoring and leak detection of the system. All PLX electrofusion fittings are manufactured with the highest manufacturing precision with precisely positioned electrical heated coils ensuring optimum melt pressure during installation.

Size range from 32mm - 160mm

