

enviro products

Environmental issues place increasing responsibility on engineers to ensure that hazardous products are handled safely. Closer focus on health and safety at work issues has also meant that companies have greater responsibilities to maintain a secure environment for employees.

Double containment piping is by no means a new concept to process piping applications. Systems using a carrier pipe with secondary containment have been installed using metal pipes for many years.

DuoSafe® PVC-U and PVC-C double containment systems are designed for ease of installation.

DuoSafe® FLEX is manufactured for dosing applications.

Poly-Flo is a unique system using specially extruded twin-wall pipes and injection moulded twin-wall fittings.

AGRUSAFE double containment is a fabricated system produced in a wide range of sizes and in a variety of material combinations.

Durapipe P-LX fuel systems are designed to safely convey petrol, diesel and fuel oil in below ground applications while ensuring harmful emissions cannot escape into the environment.

AGRUSAFE Sure Grip® Liners can be used to form single or twinwall linings for concrete structures and tanks.

Harvel® EnviroKing™ has been designed for use in photobioreactor systems and other outdoor applications where transparency is required.

section guide

DuoSafe PVC-U Pipe	425
DuoSafe PVC-U Fittings	426
DuoSafe PVC-C Pipe	428
DuoSafe PVC-C Fittings	429
DuoSafe Flex	430
Poly-Flo Polypropylene Pipe	433
Poly-Flo Polypropylene Fittings	433
Poly-Flo Polyethylene Pipe	436
Poly-Flo Polyethylene Fittings	436
Agrusafe Polypropylene Pipe	439
Agrusafe Polypropylene Fittings	439
Agrusafe Polyethylene Pipe	442
Agrusafe Polyethylene Fittings	442
Agrusafe Polypropylene x Polyethylene	446
Agrusafe PVDF x Polyethylene	447
Agrusafe PVDF x Polypropylene	448
Agrusafe PVDF x PVDF	449
Durapipe P-LX	450
Agrusafe Sure Grip	452
Harvel EnviroKing	453

application guide

- Piping systems in the nuclear, gas, petroleum and chemical industries
- Transporting dangerous fluids
- Protecting ground water
- Above or below ground use
- Choice of materials includes PVC-U, PVC-C, PE, PP and PVDF

IPS Flow Systems

Seaham Grange Industrial Estate, Seaham, Co Durham, SR7 0PT, England

Tel: +44+ 191 521 3111 Fax: +44+ 191 521 3222

E-mail: sales@ipsflowsystems.com Website: www.ipsflowsystems.com



DuoSafe®

DuoSafe systems are manufactured from rigid PVC-U or rigid PVC-C, with containment pipe options including grey or clear PVC-U, PVC-C, ABS or Polyethylene.

They are ideal for above or below ground double containment such as applications found in chemical dosing lines, or to handle a wide range of acids, alcohols, salts and halogens. They are lightweight, rigid and easy to support. DuoSafe PVC-U is suitable for working temperatures up to 60°C. DuoSafe PVC-C may be used at higher temperatures - up to 100°C.

DuoSafe systems are designed for easy installation. Easy access is given to make the first joint on the inner (carrier) pipe, before making the final joint on the outer (containment) pipe. Assembly is faster and joints are more secure. DuoSafe systems are also assembled using a unique solvent cement - Weld-On 724 - which guarantees strong integrity with a wide range of aggressive chemicals.

A second significant benefit is the ease by which pipe cut lengths can be determined using a simple calculation based on the face-to-face measurement between the fittings to be connected. Installation becomes quick and easy.

Several options on pipe pressure ratings are available - up to a maximum 16 bar. For reasons of economy it is usually also possible to reduce the pressure rating of the containment piping without affecting the system integrity.

Systems are available in PVC-U using inch sized piping. It can be specified in the standard dark grey colour, or with a clear PVC-U containment pipe to provide continuous visible monitoring of the system. Additional containment pipe options include ABS, for improved strength on above ground systems.

DuoSafe PVC-C is manufactured in inch sizes in light grey with the option of a clear PVC-U containment pipe.

DuoSafe Inch Systems

Containment	Carrier	PVC-U	PVC-C	PVC-U
		PVC-U	PVC-C	PVC-C
Pipe Size	Pipe Size			
2"	1/2"	•	•	•
3"	3/4"	•	•	•
3"	1"	•	•	•
4"	1 1/2"	•	•	•
4"	2"	•	•	•
6"	3"	•	•	•

Larger sizes on request

DuoSafe® PVC-U double containment

Pipe

6m Lengths



Class C x Class E

Size	Code	Price/Length
2 x 1/2	DCEC-B005-B020	58.14
3 x 3/4	DCEC-B007-B030	91.56
3 x 1	DCEC-B010-B030	97.47
4 x 1 1/2	DCEC-B015-B040	154.49
4 x 2	DCEC-B020-B040	171.35
6 x 3	DCEC-B030-B060	347.59
8 x 4	DCEC-B040-B080	on application

Class E x Class E

Size	Code	Price/Length
2 x 1/2	DCEE-B005-B020	72.05
3 x 3/4	DCEE-B007-B030	120.65
3 x 1	DCEE-B010-B030	126.55
4 x 1 1/2	DCEE-B015-B040	198.73
4 x 2	DCEE-B020-B040	214.87
6 x 3	DCEE-B030-B060	454.32
8 x 4	DCEE-B040-B080	on application

Sch. 40 x Sch. 80

Size	Code	Price/Length
2 x 1/2	DC84-B005-B020	88.90
3 x 3/4	DC84-B007-B030	161.52
3 x 1	DC84-B010-B030	172.05
4 x 1 1/2	DC84-B015-B040	249.29
4 x 2	DC84-B020-B040	271.05
6 x 3	DC84-B030-B060	501.37
8 x 4	DC84-B040-B080	on application

Sch. 80 x Sch. 80

Size	Code	Price/Length
2 x 1/2	DC88-B005-B020	109.97
3 x 3/4	DC88-B007-B030	203.63
3 x 1	DC88-B010-B030	214.19
4 x 1 1/2	DC88-B015-B040	315.98
4 x 2	DC88-B020-B040	337.78
6 x 3	DC88-B030-B060	653.04
8 x 4	DC88-B040-B080	on application

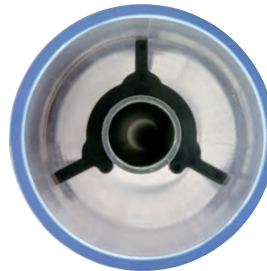
Clear Pipe

10ft (3m) Lengths



Sch. 40

Size	Code	Price/Foot
2	0400200-PL-1000	9.33
3	0400300-PL-1000	19.29
4	0400400-PL-1000	28.87
6	0400600-PL-1000	52.80
8	0400800-PL-1000	79.04



Clear PVC-U pipe is supplied as a single pipe to be used to provide transparent containment sections for visible leak detection.

Centraliser



Size	Price
2 x 1/2	2.45
3 x 3/4	3.20
3 x 1	3.20
4 x 1 1/2	3.90
4 x 2	3.90
6 x 3	on application
8 x 4	on application



Pipe Availability

We typically hold over
120 miles of pipe
in stock for immediate despatch



DuoSafe® PVC-U double containment

Tee 90°



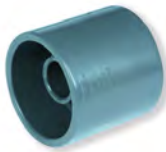
Size	Code	Price
2 x 1/2	DC01-B005-B020	50.30
3 x 3/4	DC01-B007-B030	60.63
3 x 1	DC01-B010-B030	62.06
4 x 1 1/2	DC01-B015-B040	84.02
4 x 2	DC01-B020-B040	88.08
6 x 3	DC01-B030-B060	377.37
8 x 4	DC01-B040-B080	377.37

Elbow 90°



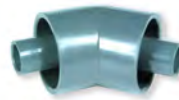
Size	Code	Price
2 x 1/2	DC06-B005-B020	26.56
3 x 3/4	DC06-B007-B030	38.10
3 x 1	DC06-B010-B030	39.53
4 x 1 1/2	DC06-B015-B040	53.59
4 x 2	DC06-B020-B040	55.58
6 x 3	DC06-B030-B060	137.32
8 x 4	DC06-B040-B080	266.26

Socket



Size	Code	Price
2 x 1/2	DC29-B005-B020	9.75
3 x 3/4	DC29-B007-B030	23.44
3 x 1	DC29-B010-B030	23.54
4 x 1 1/2	DC29-B015-B040	31.02
4 x 2	DC29-B020-B040	31.49
6 x 3	DC29-B030-B060	72.44
8 x 4	DC29-B040-B080	96.45

Elbow 45°



Size	Code	Price
2 x 1/2	DC17-B005-B020	35.53
3 x 3/4	DC17-B007-B030	59.53
3 x 1	DC17-B010-B030	64.49
4 x 1 1/2	DC17-B015-B040	97.36
4 x 2	DC17-B020-B040	101.26
6 x 3	DC17-B030-B060	168.88
8 x 4	DC17-B040-B080	294.95

Zoning Fitting



Size	Code	Price
2 x 1/2	DCDB-B005-B020	49.23
3 x 3/4	DCDB-B007-B030	53.92
3 x 1	DCDB-B010-B030	55.04
4 x 1 1/2	DCDB-B015-B040	93.92
4 x 2	DCDB-B020-B040	99.12
6 x 3	DCDB-B030-B060	107.08
8 x 4	DCDB-B040-B080	115.94

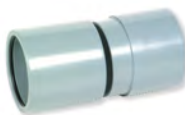
Termination Fitting

Plain Socket



Size	Code	Price
2 x 1/2	DCTM-B005-B020	67.26
3 x 3/4	DCTM-B007-B030	84.14
3 x 1	DCTM-B010-B030	84.34
4 x 1 1/2	DCTM-B015-B040	96.53
4 x 2	DCTM-B020-B040	99.98
6 x 3	DCTM-B030-B060	162.40
8 x 4	DCTM-B040-B080	202.05

Closure Fitting



Size	Code	Price
2	DCCF-B020	221.91
3	DCCF-B030	225.72
4	DCCF-B040	232.59
6	DCCF-B060	246.34
8	DCCF-B080	326.59

Termination Fitting

Flanged



Size	Code	Price
2 x 1/2	DCTF-B005-B020	76.21
3 x 3/4	DCTF-B007-B030	93.32
3 x 1	DCTF-B010-B030	94.14
4 x 1 1/2	DCTF-B015-B040	106.92
4 x 2	DCTF-B020-B040	117.89
6 x 3	DCTF-B030-B060	196.14
8 x 4	DCTF-B040-B080	247.05



PVC-U and PVC-C Double Containment

This range is developed from the Spears® double containment system. It is unique because it is designed for easy installation. The carrier fittings are supplied loose so that solvent welded joints can be made in a logical, ordered way, eliminating the need to make simultaneous joints on the carrier and containment pipes.

Ball Valve

Manual Operation



Size	Code	Price
2 x 1/2	DCBV-B005-B020	322.95
3 x 3/4	DCBV-B007-B030	346.84
3 x 1	DCBV-B010-B030	358.92
4 x 1 1/2	DCBV-B015-B040	602.60
4 x 2	DCBV-B020-B040	621.88
6 x 3	DCBV-B030-B060	on application
8 x 4	DCBV-B040-B080	on application

Leak Detection Tee

With Drain Valve



Size	Code	Price
2 x 1	DCLD-B020	68.98
3 x 1	DCLD-B030	84.60
4 x 1	DCLD-B040	114.23
6 x 1	DCLD-B060	236.16
8 x 1	DCLD-B080	405.39

Valve Box

Includes valve



Size	Code	Price
2 x 1/2	DCVB-B005-B020	387.61
3 x 3/4	DCVB-B007-B030	464.79
3 x 1	DCVB-B010-B030	470.04
4 x 1 1/2	DCVB-B015-B040	566.45
4 x 2	DCVB-B020-B040	583.89
6 x 3	DCVB-B030-B060	on application
8 x 4	DCVB-B040-B080	on application

Leak Detection Saddle

With Drain Valve



Size	Code	Price
2 x 1	DCLS-B020	79.26
3 x 1	DCLS-B030	88.75
4 x 1	DCLS-B040	96.73
6 x 1	DCLS-B060	116.49
8 x 1	DCLS-B080	206.99

Solvent Cement*

Size	Code	Price
500ml tin	724-301	20.52
Quart (946ml) tin	724-201	36.92

*The use of Weld-On 724 Cement with this system is a requirement of the warranty.



Primer

Size	Code	Price
Pint (473ml) tin	770-300	15.93
Quart (946ml) tin	770-200	25.89



All WELD-ON cements, primers and cleaning fluids are now LOW VOC

Cleaning Fluid

Size	Code	Price
500ml tin	765-300	8.73



DuoSafe® PVC-C double containment

Pipe

6m Lengths



Sch. 40 x Sch. 80

Size	Code	Price/Length
2 x 1/2	DC84-C005-C020	163.62
3 x 3/4	DC84-C007-C030	306.17
3 x 1	DC84-C010-C030	327.22
4 x 1 1/2	DC84-C015-C040	455.74
4 x 2	DC84-C020-C040	497.86
6 x 3	DC84-C030-C060	988.70
8 x 4	DC84-C040-C080	on application

Sch. 80 x Sch. 80

Size	Code	Price/Length
2 x 1/2	DC88-C005-C020	197.33
3 x 3/4	DC88-C007-C030	371.47
3 x 1	DC88-C010-C030	381.73
4 x 1 1/2	DC88-C015-C040	576.51
4 x 2	DC88-C020-C040	618.65
6 x 3	DC88-C030-C060	1233.06
8 x 4	DC88-C040-C080	on application

PVC-U Clear Pipe

10ft (3m) Lengths



Sch. 40

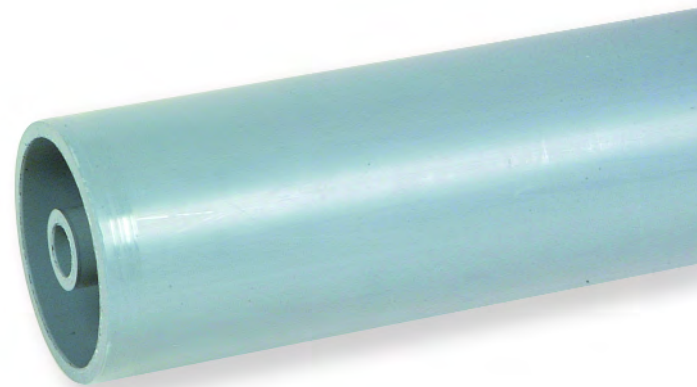
Size	Code	Price/Foot
2	0400200-PL-1000	9.33
3	0400300-PL-1000	19.29
4	0400400-PL-1000	28.87
6	0400600-PL-1000	52.80
8	0400800-PL-1000	79.04

Clear PVC-U pipe is supplied as a single pipe to be used to provide transparent containment sections for visible leak detection.

Centraliser



Size	Price
2 x 1/2	2.45
3 x 3/4	3.20
3 x 1	3.20
4 x 1 1/2	3.90
4 x 2	3.90
6 x 3	on application
8 x 4	on application



Tee 90°



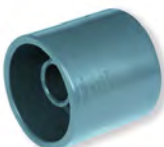
Size	Code	Price
2 x 1/2	DC01-C005-C020	55.71
3 x 3/4	DC01-C007-C030	94.15
3 x 1	DC01-C010-C030	100.07
4 x 1 1/2	DC01-C015-C040	145.90
4 x 2	DC01-C020-C040	152.10
6 x 3	DC01-C030-C060	334.61
8 x 4	DC01-C040-C080	786.46

Elbow 90°



Size	Code	Price
2 x 1/2	DC06-C005-C020	39.53
3 x 3/4	DC06-C007-C030	69.79
3 x 1	DC06-C010-C030	74.86
4 x 1 1/2	DC06-C015-C040	132.05
4 x 2	DC06-C020-C040	140.93
6 x 3	DC06-C030-C060	245.76
8 x 4	DC06-C040-C080	567.28

Socket



Size	Code	Price
2 x 1/2	DC29-C005-C020	15.44
3 x 3/4	DC29-C007-C030	34.30
3 x 1	DC29-C010-C030	35.76
4 x 1 1/2	DC29-C015-C040	50.14
4 x 2	DC29-C020-C040	51.88
6 x 3	DC29-C030-C060	122.94
8 x 4	DC29-C040-C080	290.42

Elbow 45°



Size	Code	Price
2 x 1/2	DC17-C005-C020	41.44
3 x 3/4	DC17-C007-C030	74.88
3 x 1	DC17-C010-C030	80.80
4 x 1 1/2	DC17-C015-C040	116.77
4 x 2	DC17-C020-C040	128.45
6 x 3	DC17-C030-C060	291.78
8 x 4	DC17-C040-C080	583.48

Zoning Fitting



Size	Code	Price
2 x 1/2	DCDB-C005-C020	49.79
3 x 3/4	DCDB-C007-C030	55.04
3 x 1	DCDB-C010-B030	115.72
4 x 1 1/2	DCDB-C015-C040	125.68
4 x 2	DCDB-C020-C040	140.70
6 x 3	DCDB-C030-C060	182.47
8 x 4	DCDB-C040-C080	186.09

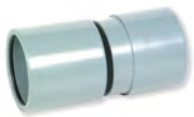
Termination Fitting

Plain Socket



Size	Code	Price
2 x 1/2	DCTM-C005-C020	101.75
3 x 3/4	DCTM-C007-C030	103.98
3 x 1	DCTM-C010-C030	106.91
4 x 1 1/2	DCTM-C015-C040	135.33
4 x 2	DCTM-C020-C040	141.30
6 x 3	DCTM-C030-C060	255.94
8 x 4	DCTM-C040-C080	457.52

Closure Fitting



Size	Code	Price
2	DCCF-C020	223.07
3	DCCF-C030	234.68
4	DCCF-C040	244.93
6	DCCF-C060	298.56
8	DCCF-C080	401.63

Termination Fitting

Flanged



Size	Code	Price
2 x 1/2	DCTF-C005-C020	112.91
3 x 3/4	DCTF-C007-C030	115.79
3 x 1	DCTF-C010-C030	120.26
4 x 1 1/2	DCTF-C015-C040	153.85
4 x 2	DCTF-C020-C040	164.77
6 x 3	DCTF-C030-C060	305.38
8 x 4	DCTF-C040-C080	426.81

Ball Valve

Manual Operation



Size	Code	Price
2 x 1/2	DCBV-C005-C020	484.46
3 x 3/4	DCBV-C007-C030	500.19
3 x 1	DCBV-C010-C030	524.37
4 x 1 1/2	DCBV-C015-C040	942.70
4 x 2	DCBV-C020-C040	995.54
6 x 3	DCBV-C030-C060	on application
8 x 4	DCBV-C040-C080	on application

Leak Detection Tee

With Drain Valve



Size	Code	Price
2 x 1	DCLD-C020	90.16
3 x 1	DCLD-C030	143.84
4 x 1	DCLD-C040	184.03
6 x 1	DCLD-C060	443.74
8 x 1	DCLD-C080	603.89

Valve Box

Includes valve



Size	Code	Price
2 x 1/2	DCVB-C005-C020	on application
3 x 3/4	DCVB-C007-C030	on application
3 x 1	DCVB-C010-C030	on application
4 x 1 1/2	DCVB-C015-C040	on application
4 x 2	DCVB-C020-C040	on application
6 x 3	DCVB-C030-C060	on application
8 x 4	DCVB-C040-C080	on application

Leak Detection Saddle

With Drain Valve



Size	Code	Price
2 x 1	DCLS-C020	91.48
3 x 1	DCLS-C030	104.61
4 x 1	DCLS-C040	115.54
6 x 1	DCLS-C060	159.31
8 x 1	DCLS-C080	295.68

Solvent Cement*

Size	Code	Price
500ml tin	724-301	20.52
Quart (946ml) tin	724-201	36.92

*The use of Weld-On 724 Cement with this system is a requirement of the warranty.

Primer

Size	Code	Price
Pint (473ml) tin	770-300	15.93
Quart (946ml) tin	770-200	25.89

Cleaning Fluid

Size	Code	Price
500ml tin	765-300	8.73

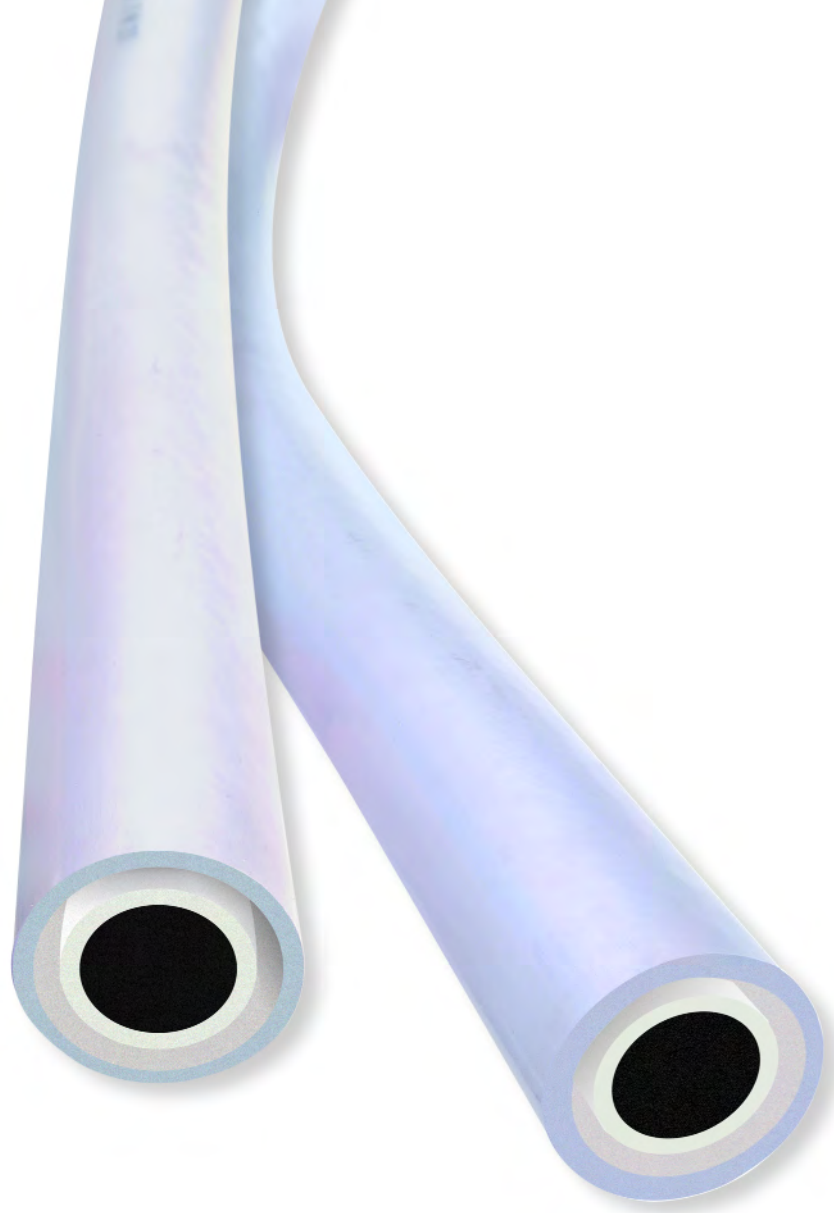
 DuoSafe® FLEX

DuoSafe FLEX is engineered for applications where long, continuous lengths of small diameter pipe is required. It is ideal for dosing applications such as in water treatment where there may be multiple dosing points drawing from a single chemical storage unit.

DuoSafe FLEX is developed in conjunction with Copely Developments - one of the pioneers in the development of flexible pipe systems, and the inventors of the first open mesh PVC hose in 1950.

The system uses high quality flexibles that are manufactured as double contained products in a single extrusion process. They are supplied either in standard coil lengths of up to 300 metres, or may be cut to specific shorter lengths or specially manufactured in longer coils should the job require it. Connections between lengths or at termination points are made using a special range of rigid PVC-U fittings.

There are two types of flexible carrier hose available - Aquachem and Hydrachem - each offering strong resistance to a wide range of dosing chemicals. The carrier (dosing) tube is manufactured in sizes from DN 6mm up to DN 38mm, with a maximum working pressure of 10 bar.



DuoSafe FLEX Systems			
Containment Hose ID	Carrier Hose ID	Aquachem	Hydrachem
19mm	6.3mm	•	•
25mm	10.0mm	•	•
25mm	12.5mm	•	•
32mm	19.0mm	•	•
38mm	25.0mm	•	•
50mm	31.5mm	•	•
60mm	38.0mm	•	•

DuoSafe FLEX Aquachem Double Containment Hose

Code	Carrier Hose Size		Containment Hose Size		Price per Metre
	I.D. (mm)	O.D. (mm)	I.D. (mm)	O.D. (mm)	
PRH 06 / C25	6.3	12.0	19.0	25.0	18.15
PRH 10 / C25	10.0	16.0	25.0	31.0	21.75
PRH 12 / C25	12.5	19.0	25.0	31.0	25.03
PRH 19 / C325	19.0	26.0	32.0	42.0	28.23
PRH 25 / C385	25.0	33.0	38.0	48.0	31.62
PRH 32 / C506	31.5	41.0	50.0	62.0	42.78
PRH 38 / C606	38.0	48.5	60.0	72.0	51.64
PRH 50 / C75	50.0	62.0	75.0	86.0	65.35

Colour: White Carrier Hose with Clear Blue Tint Containment Hose

DuoSafe FLEX Hydrachem Double Containment Hose

Code	Carrier Hose Size		Containment Hose Size		Price per Metre
	I.D. (mm)	O.D. (mm)	I.D. (mm)	O.D. (mm)	
EVC 06 / C25	6.3	12.0	19.0	25.0	18.15
EVC 10 / C25	10.0	16.0	25.0	31.0	21.75
EVC 12 / C25	12.5	19.0	25.0	31.0	25.03
EVC 19 / C325	19.0	26.0	32.0	42.0	28.23
EVC 25 / C385	25.0	33.0	38.0	48.0	31.62
EVC 32 / C506	31.5	41.0	50.0	62.0	42.78
EVC 38 / C606	38.0	48.5	60.0	72.0	51.64

Colour: White Carrier Hose with Clear Blue Tint Containment Hose



DuoSafe Flex Fittings

Dosing Connector

Terminates inner hose



Hose Size	Thread Size	Code	Price	
				I.D. (mm)
6.3	12.0	1/2 Male	PHR 06 DOS	26.95
10.0	16.0	1/2 Male	PHR 10 DOS	28.49
12.5	19.0	1/2 Male	PHR 12 DOS	28.79
19.0	26.0	3/4 Female	PHR 19 DOS	31.13
25.0	33.0	1 Female	PHR 25 DOS	32.04
31.5	41.0	1 1/4 Female	PHR 31 DOS	53.52
38.0	48.5	1 1/2 Female	PHR 38 DOS	75.36
50.0	62.0	2 Female	PHR 50 DOS	103.51

Colour: Grey PVC-U

Complete with stainless steel compression bands

Double Connector

Terminates inner and outer hose. Provides threaded connection to inner hose



Inner Hose	Outer Hose	Thread Size	Code	Price
6.3	19.0	1/2 Male	PHR 06 DUAL	35.78
10.0	25.0	1/2 Male	PHR 10 DUAL	37.40
12.5	25.0	1/2 Male	PHR 12 DUAL	39.49
19.0	32.0	3/4 Female	PHR 19 DUAL	42.28
25.0	38.0	1 Female	PHR 25 DUAL	44.13
31.5	50.0	1 1/4 Female	PHR 31 DUAL	73.45
38.0	60.0	1 1/2 Female	PHR 38 DUAL	102.71
50.0	75.0	2 Female	PHR 50 DUAL	132.61

Colour: Grey PVC-U

Complete with stainless steel compression bands

Outer Termination

Terminates outer hose only. Male solvent weld spigot connection



Hose Size	Spigot Size	Code	Price	
				I.D. (mm)
19.0	25.0	20mm	PHR 06 OT	28.25
25.0	31.0	25mm	PHR 10/12 OT	28.49
32.0	42.0	32mm	PHR 19 OT	31.13
38.0	48.0	40mm	PHR 25 OT	32.04
50.0	62.0	50mm	PHR 31 OT	53.52
60.0	72.0	63mm	PHR 38 OT	75.36
75.0	86.0	75mm	PHR 50 OT	103.51

Colour: Grey PVC-U

Complete with stainless steel compression bands

Compression Tool

Heavy duty model



Code	Price
14 1000 30	84.55

poly-flo



Poly-Flo®

The Asahi/America Poly-Flo system is a unique product. Manufactured in a patented process, it uses rigid pipes that are extruded as a twin-wall product together with twin-wall fittings that are injection moulded as a single item.

The first benefit from this process is the minimisation of the space required for the containment pipe. Unlike all other rigid systems - that require the size of the containment to be large enough to pass through the carrier pipe and fittings - the unitary construction allows for a significant overall reduction in size.

Poly-Flo is also extremely easy to cut and weld, making installation relatively inexpensive. The carrier pipe and the containment pipe are butt-fusion welded in a single, simultaneous process that gives reliable joints between pipes and fittings.

The Poly-Flo range also includes a number of fittings that are not available in other double containment systems - most notably flanges to enable systems to be prefabricated or to be disassembled.

Manufactured from black Polypropylene, natural PVDF or black Polyethylene, this system is ideal for applications such as laboratory waste systems or pressurised transfer lines. Typical installations are in waste treatment, carrying sulphuric acid or caustic soda, for bulk storage chemicals such as sodium hydroxide and aluminium nitrate; and in semi-conductor plants, handling sulphuric, nitric, and hydrofluoric acids for wet stations. The black Polypropylene and Polyethylene materials also offer a high level of resistance to UV when installed outdoors.

Poly-Flo is available in carrier pipe sizes 1" (DN25mm), 2" (DN 50mm) and 4" (DN 100mm). The assembled system has a fully pressure rated carrier pipe and containment pipe, suitable for use at working pressures of up to 6 bar.



Poly-Flo®

Containment		PP	PE
Pipe Size	Carrier Pipe Size	PP	PE
	2"	1"	●
3"	2"	●	●
6"	4"	●	●

- Polypropylene is suitable for use at temperatures up to 100°C
- HDPE is suitable for use at temperatures up to 60°C
- Black PP and HDPE is resistant to weathering
- Carrier and containment is fully pressure rated
- Maximum working pressure 6 bar at 20°C



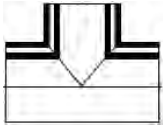
Double Containment Pipe - Black PP

6 Metre Lengths

Size	Code	Price/m
2"x1"	4201249	39.68
3"x2"	4201338	50.24
6"x4"	4201532	117.98

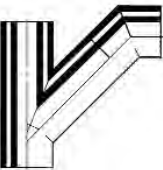


Tee 90°



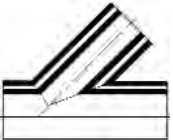
Size	Code	Price
2"x1"	4211249	22.59
3"x2"	4211338	53.26
6"x4"	4211532	809.20

Swept Tee 90°



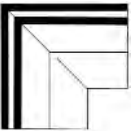
Size	Code	Price
2"x1"	-	
3"x2"	4250338	228.72
6"x4"	4250532	517.51

Tee 45°



Size	Code	Price
2"x1"	-	
3"x2"	4251338	104.80
6"x4"	4251532	300.37

Elbow 90°



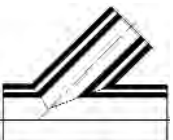
Size	Code	Price
2"x1"	4204249	17.94
3"x2"	4204338	42.12
6"x4"	-	

Bend 90°



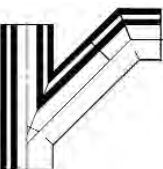
Size	Code	Price
2"x1"	4205249	114.36
3"x2"	4205338	188.20
6"x4"	4205532	373.47

Reducing Tee 45°



Size	Code	Price
3"/2"x2"/1"	4291338	236.66
6"/4"x3"/2"	4291532	543.56

Reducing Swept Tee 90°



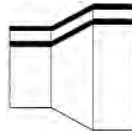
Size	Code	Price
3"/2"x2"/1"	4290338	313.41
6"/4"x3"/2"	4290532	651.42

Elbow 45°



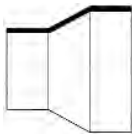
Size	Code	Price
2"x1"	4208249	26.34
3"x2"	4208338	63.40
6"x4"	4208532	156.34

Concentric Reducer



Size	Code	Price
3"/2"x2"/1"	4235338	104.80
6"/4"x3"/2"	4235532	259.84

Outer Wall Reducer



Size	Code	Price
3"x2"	4234338	42.84
6"x4"	4234532	85.99

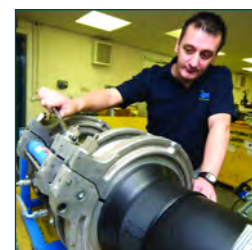
Test Cap

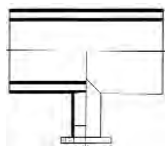


Size	Code	Price
2"x1"	4221249	26.34
3"x2"	4221338	63.40
6"x4"	4221532	156.34

Machine Hire

Don't have the tools?
We have a dedicated fleet of welding equipment available to hire on a weekly basis.





Outer Wall Outlet

Branch Flanged 1" ASA 150

Size	Code	Price
2"x1"	4292249	259.11
3"x2"	4292338	288.79
6"x4"	4292532	353.20



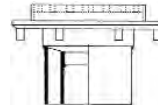
Float Switch Adaptor

Size	Code	Price
1"	4253249	75.85



Outer Wall Adaptor

Size	Code	Price
2"x1"	4252249	30.55
3"x2"	4252338	73.69
6"x4"	4252532	183.12



Floor Drain

Adjustable

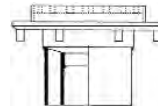
Size	Code	Price
3"x2"	4260338	1186.99
6"x4"	4260532	1276.75



Female Adaptor

BSP or NPT Female Thread

Size	Code	Price
2"x1"	4230249	26.78
3"x2"	4230338	64.71
6"x4"	4230532	160.69



Floor Drain

Non-Adjustable

Size	Code	Price
3"x2"	4262338	642.72
6"x4"	4262532	1059.62



Socket Fusion Adaptor

Inch Size Socket

Size	Code	Price
2"x1"	4229249	51.24
3"x2"	4229338	94.53
6"x4"	4229532	203.40



P-Trap

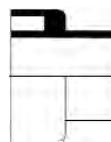
Size	Code	Price
2"x1"	4264249	273.59
3"x2"	4264338	420.51
6"x4"	4264532	793.27



Socket Fusion Adaptor

Metric Size Socket

Size	Code	Price
2"x1"	4279249	30.55
3"x2"	4279338	73.69
6"x4"	4279532	183.12



Spigot Adaptor

Size	Code	Price
2"x1"	4278249	114.21
3"x2"	4278338	156.34
6"x4"	4278532	183.12



Clean Out (with plug)

Size	Code	Price
2"x1"	4232249	60.95
3"x2"	4232338	114.21
6"x4"	4232532	297.49

**O-Ring Flange
ASA 150**



Size	Code	Price
2"x1"	4245249	77.01
3"x2"	4245338	91.77
6"x4"	4245532	227.26

**Termination Flange
ASA 150**



Size	Code	Price
2"x1"	4243249	42.84
3"x2"	4243338	104.80
6"x4"	4243532	393.02

Flange ASA 150



Size	Code	Price
2"x1"	4246249	77.01
3"x2"	4246338	91.77
6"x4"	4246532	227.26

**Outer Wall O-Ring
Flange ASA 150**



Size	Code	Price
2"x1"	4241249	84.39
3"x2"	4241338	208.46
6"x4"	4241532	517.51

Blind Flange ASA 150



Size	Code	Price
2"x1"	4242249	118.71
3"x2"	4242338	156.34
6"x4"	4242532	422.69

**Outer Wall Flange
ASA 150**



Size	Code	Price
2"x1"	4244249	84.39
3"x2"	4244338	208.46
6"x4"	4244532	517.51

**Isolation Flange
ASA 150**



Size	Code	Price
2"x1"	4240249	119.13
3"x2"	4240338	156.34
6"x4"	4240532	422.69

Flange O-Ring Kit

FPM

Size	Code	Price
2"x1"	4288249	17.36
3"x2"	4288338	54.58
6"x4"	4288532	123.49

Flange O-Ring Kit

EPDM

Size	Code	Price
2"x1"	4488249	7.10
3"x2"	4488338	42.27
6"x4"	4488532	45.31

**Outer Wall Flange
O-Ring**

FPM

Size	Code	Price
2"x1"	4287249	12.16
3"x2"	4287338	30.55
6"x4"	4287532	63.99

**Outer Wall Flange
O-Ring**

EPDM

Size	Code	Price
2"x1"	4487249	4.86
3"x2"	4487338	20.84
6"x4"	4487532	28.67

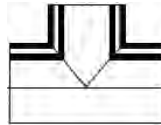




Double Containment Pipe - Black PE

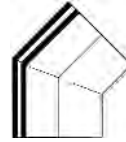
6 Metre Lengths

Size	Code	Price/m
2"x1"	4401249	68.20
3"x2"	4401338	74.84
6"x4"	4401532	170.83



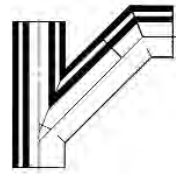
Tee 90°

Size	Code	Price/m
2"x1"	4411249	19.69
3"x2"	4411338	46.77
6"x4"	4411532	883.03



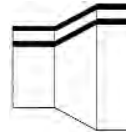
Elbow 45°

Size	Code	Price/m
2"x1"	4408249	23.04
3"x2"	4408338	55.45
6"x4"	4408532	136.96



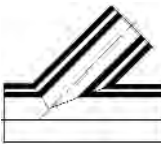
Swept Tee 90°

Size	Code	Price/m
2"x1"	-	-
3"x2"	4450338	403.14
6"x4"	4450532	513.16



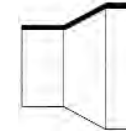
Concentric Reducer

Size	Code	Price/m
3"/2"x2"/1"	4435338	91.77
6"/4"x3"/2"	4435532	227.26



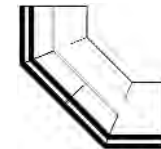
Tee 45°

Size	Code	Price/m
2"x1"	-	-
3"x2"	4451338	348.15
6"x4"	4451532	377.10



Outer Wall Reducer

Size	Code	Price/m
3"x2"	4434338	37.50
6"x4"	4434532	75.44



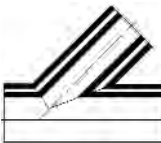
Bend 90°

Size	Code	Price/m
2"x1"	4405249	100.03
3"x2"	4405338	164.31
6"x4"	4405532	508.10



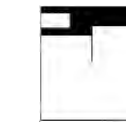
Test Cap

Size	Code	Price/m
2"x1"	4421249	23.04
3"x2"	4421338	55.45
6"x4"	4421532	136.96



Reducing Tee 45°

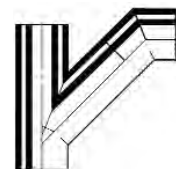
Size	Code	Price/m
3"/2"x2"/1"	4491338	439.33
6"/4"x3"/2"	4491532	603.63



Socket Fusion Adaptor

Inch Size Socket

Size	Code	Price/m
2"x1"	4429249	44.73
3"x2"	4429338	82.68
6"x4"	4429532	178.05



Reducing Swept Tee 90°

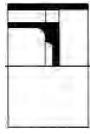
Size	Code	Price/m
3"/2"x2"/1"	4490338	462.49
6"/4"x3"/2"	4490532	657.92



Socket Fusion Adaptor

Metric Size Socket

Size	Code	Price/m
2"x1"	4479249	26.78
3"x2"	4479338	64.71
6"x4"	4479532	160.69



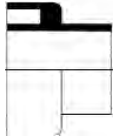
Outer Wall Adaptor

Size	Code	Price/m
2"x1"	4452249	26.78
3"x2"	4452338	64.71
6"x4"	4452532	160.69



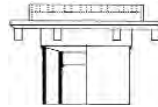
Float Switch Adaptor

Size	Code	Price/m
1"	4453249	66.29



Spigot Adaptor

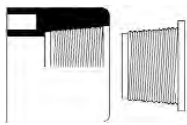
Size	Code	Price/m
2"x1"	4478249	99.86
3"x2"	4478338	136.96
6"x4"	4478532	160.69



Floor Drain

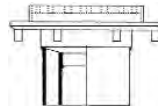
Adjustable

Size	Code	Price/m
3"x2"	4460338	1039.36
6"x4"	4460532	1117.51



Clean Out (with plug)

Size	Code	Price/m
2"x1"	4432249	53.55
3"x2"	4432338	99.86
6"x4"	4432532	259.84



Floor Drain

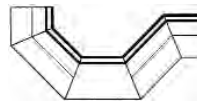
Non-Adjustable

Size	Code	Price/m
3"x2"	4462338	562.39
6"x4"	4462532	927.88



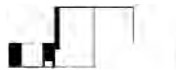
Termination Flange ASA 150

Size	Code	Price
2"x1"	4443249	37.50
3"x2"	4443338	91.77
6"x4"	4443532	343.80



P-Trap

Size	Code	Price/m
2"x1"	4464249	239.57
3"x2"	4464338	368.41
6"x4"	4464532	693.39



Outer Wall O-Ring Flange ASA 150

Size	Code	Price
2"x1"	4441249	73.83
3"x2"	4441338	182.40
6"x4"	4441532	453.08



Outer Wall Flange ASA 150

Size	Code	Price
2"x1"	4444249	73.83
3"x2"	4444338	182.40
6"x4"	4444532	453.08

Outer Wall Flange O-Ring

FPM

Size	Code	Price
2"x1"	4287249	12.16
3"x2"	4287338	30.55
6"x4"	4287532	63.99

Outer Wall Flange O-Ring

EPDM

Size	Code	Price
2"x1"	4487249	4.86
3"x2"	4487338	20.84
6"x4"	4487532	28.67





 Agrusafe

AgruSafe double containment is fabricated from separate pipes, and is available in Polypropylene, PVDF, Polyethylene and ECTFE (Halar). It is manufactured by AGRU - using the latest production and fabrication techniques to ensure maximum system integrity.

The systems may be assembled using the same carrier and containment materials, or they may also be ordered with dissimilar materials for reasons of economy or perhaps to suit a particular application.

AgruSafe is available with carrier pipe sizes as small as DN 25mm, however it is especially suitable for larger diameter systems. The standard range features carrier pipe diameters in sizes up to DN 250mm, but it is commonly manufactured in larger sizes up to DN 600mm. It is ideal for industrial and process waste lines as well as for pressurised transfer piping. Typical applications are found in pharmaceutical and semi-conductor plants, steel mills, plating shops, or in the chemical and nuclear industries.

There are two separate welding techniques used for AgruSafe systems: simultaneous welding and cascade welding.

Simultaneous welding uses the standard butt-fusion welding technique and is used where carrier pipes and containment pipes of the same material are used. The twin walls of the pipes and the fittings are welded together during the assembly process so that they can be clamped as one piece in the butt-fusion welding machine. Welding of the carrier and containment pipe takes place simultaneously.

The cascade welding technique is required when the carrier and containment pipes are from different materials. Cascade welding requires a specially adapted butt-fusion welding machine with a split welding plate so that the carrier pipe can be welded first. Once this is done, the outer shell of the welding plate is moved into position so that the containment pipe can be welded. Welding machines for both systems are available for sale or for hire.

AgruSafe systems are available in a variety of pressure ratings - up to PN16 - to suit the application. Using the wide range of pressure rated pipe and fittings - for example PN 3.2, PN 6 or PN 10 - it is possible to optimise the cost effectiveness of the system.



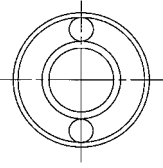
AgruSafe Simultaneous Welded Systems					
Containment		PP	PE	PVDF	ECTFE
Pipe Size	Carrier Pipe Size	PP	PE	PVDF	ECTFE
90mm	32mm	•	•	•	•
110mm	63mm	•	•		
125mm	63mm			•	
160mm	63mm				•
160mm	90mm	•	•	•	•
200mm	110mm	•	•	•	
280mm	160mm	•	•	•	
315mm	200mm	•	•		
355mm	250mm	•	•		

AgruSafe Cascade Welded Systems					
Containment		PE	PE	PP	
Pipe Size	Carrier Pipe Size	PP	PVDF	PVDF	
90mm	32mm	•	•	•	
110mm	63mm				
125mm	63mm	•	•	•	
160mm	90mm	•	•	•	
200mm	110mm	•	•	•	
280mm	160mm	•	•	•	

Larger sizes on request

Pipe - PP x PP

5m Lengths

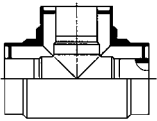


PN3.2 x PN6		
Size Containment/Carrier	Code	Price/M
90/32	-	
110/63	-	
160/90	80 785 1690 37	69.05
200/110	80 785 2011 37	102.77
280/160	-	
315/200	-	
355/250	-	

PN3.2 x PN10	
Code	Price/M
-	
80 785 1163 31	49.95
80 785 1690 31	73.83
80 785 2011 31	109.73
80 785 2816 31	197.61
80 785 3120 31	241.03
80 785 3525 31	322.81

PN6 x PN10	
Code	Price/M
80 785 9032 71	44.45
-	
-	
-	
-	
-	
-	

Tee 90° - PP x PP

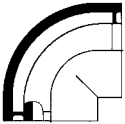


PN3.2 x PN6		
Size Containment/Carrier	Code	Price
90/32	-	
110/63	-	
160/90	80 106 1690 37	262.75
200/110	80 106 2011 37	335.84
280/160	-	
315/200	-	
355/250	-	

PN3.2 x PN10	
Code	Price
-	
80 106 1163 31	173.71
80 106 1690 31	270.70
80 106 2011 31	343.06
80 106 2816 31	812.08
80 106 3120 31	1159.49
80 106 3525 31	1952.74

PN6 x PN10	
Code	Price
80 106 9032 71	143.74
-	
-	
-	
-	
-	
-	

Bend 90° - PP x PP

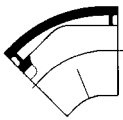


PN3.2 x PN6		
Size Containment/Carrier	Code	Price
90/32	-	
110/63	-	
160/90	80 101 1690 37	178.05
200/110	80 101 2011 37	235.24
280/160	-	
315/200	-	
355/250	-	

PN3.2 x PN10	
Code	Price
-	
80 101 1163 31	125.36
80 101 1690 31	180.23
80 101 2011 31	235.97
80 101 2816 31	526.92
80 101 3120 31	618.83
80 101 3525 31	1243.46

PN6 x PN10	
Code	Price
80 101 9032 71	99.30
-	
-	
-	
-	
-	
-	

Bend 45° - PP x PP

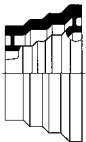


PN3.2 x PN6		
Size Containment/Carrier	Code	Price
90/32	-	
110/63	-	
160/90	80 102 1690 37	214.81
200/110	80 102 2011 37	278.66
280/160	-	
315/200	-	
355/250	-	

PN3.2 x PN10	
Code	Price
-	
80 102 1163 31	150.54
80 102 1690 31	215.68
80 102 2011 31	283.71
80 102 2816 31	618.12
80 102 3120 31	693.39
80 102 3525 31	1491.00

PN6 x PN10	
Code	Price
80 102 9032 71	119.01
-	
-	
-	
-	
-	
-	

Concentric Reducer - PP x PP



PN3.2 x PN6		
Size Containment/Carrier	Code	Price
110/63x90/32	-	
160/90x90/32	-	
160/90x110/63	80 107 9063 37	186.74
200/110x110/63	-	
200/110x160/90	80 107 1190 37	325.69
280/160x160/90	-	
280/160x200/110	-	
315/200x200/110	-	
315/200x280/160	-	
355/250x280/160	-	
355/250x315/200	-	

PN3.2 x PN10	
Code	Price
-	
80 107 9032 31	241.03
80 107 9063 31	187.47
80 107 1163 31	400.96
80 107 1190 31	327.15
80 107 1690 31	626.78
80 107 1611 31	626.78
80 107 2011 31	810.63
80 107 2016 31	810.63
80 107 2516 31	1729.83
80 107 2520 31	1524.29

PN6 x PN10	
Code	Price
80 107 6332 71	111.17
-	
-	
-	
-	
-	
-	
-	
-	

Cap - PP x PP



PN3.2 x PN6		
Size Containment/Carrier	Code	Price
90/32	-	
110/63	-	
160/90	80 154 1690 37	159.24
200/110	80 154 2011 37	196.14
280/160	-	
315/200	-	
355/250	-	

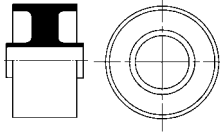
PN3.2 x PN10	
Code	Price
-	
80 154 1163 31	115.08
80 154 1690 31	159.24
80 154 2011 31	196.14
80 154 2816 31	263.44
80 154 3120 31	327.88
80 154 3525 31	373.47

PN6 x PN10	
Code	Price
80 154 9032 71	105.08
-	
-	
-	
-	
-	
-	

Fixed Point Fitting - PP x PP

(Dog Bone Type 1)

Isolates Containment



PN3.2 x PN6

Size Containment/Carrier	Code	Price
90/32	-	-
110/63	-	-
160/90	80 137 1690 37	167.20
200/110	80 137 2011 37	205.57
280/160	-	-
315/200	-	-
355/250	-	-

PN3.2 x PN10

Code	Price
-	-
80 137 1163 31	121.59
80 137 1690 31	167.20
80 137 2011 31	205.57
80 137 2816 31	276.50
80 137 3120 31	344.53
80 137 3525 31	392.29

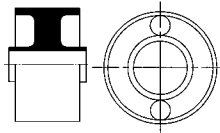
PN6 x PN10

Code	Price
80 137 9032 71	110.87
-	-
-	-
-	-
-	-
-	-
-	-

Fixed Point Fitting - PP x PP

(Dog Bone Type 1)

Continues Containment



PN3.2 x PN6

Size Containment/Carrier	Code	Price
90/32	-	-
110/63	-	-
160/90	80 147 1690 37	191.81
200/110	80 147 2011 37	236.66
280/160	-	-
315/200	-	-
355/250	-	-

PN3.2 x PN10

Code	Price
-	-
80 147 1163 31	151.99
80 147 1690 31	191.81
80 147 2011 31	236.66
80 147 2816 31	318.45
80 147 3120 31	396.63
80 147 3525 31	450.92

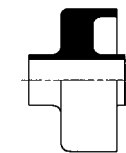
PN6 x PN10

Code	Price
80 147 9032 71	138.68
-	-
-	-
-	-
-	-
-	-
-	-

Fixed Point Fitting - PP x PP

(Dog Bone Type 1-A)

Terminates Containment



PN3.2 x PN6

Size Containment/Carrier	Code	Price
90/32	-	-
110/63	-	-
160/90	80 136 1690 37	167.20
200/110	80 136 2011 37	205.57
280/160	-	-
315/200	-	-
355/250	-	-

PN3.2 x PN10

Code	Price
-	-
80 136 1163 31	121.59
80 136 1690 31	167.20
80 136 2011 31	205.57
80 136 2816 31	276.50
80 136 3120 31	344.53
80 136 3525 31	392.29

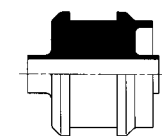
PN6 x PN10

Code	Price
80 136 9032 71	110.87
-	-
-	-
-	-
-	-
-	-
-	-

Fixed Point Fitting - PP x PP

(Dog Bone Type 2-A)

Terminates Containment



PN3.2 x PN6

Size Containment/Carrier	Code	Price
90/32	-	-
110/63	-	-
160/90	80 138 1690 37	235.97
200/110	80 138 2011 37	353.93
280/160	-	-
315/200	-	-
355/250	-	-

PN3.2 x PN10

Code	Price
-	-
80 138 1163 31	154.88
80 138 1690 31	235.97
80 138 2011 31	353.93
80 138 2816 31	481.33
80 138 3120 31	490.72
80 138 3525 31	568.19

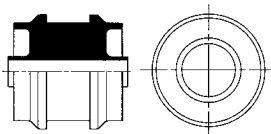
PN6 x PN10

Code	Price
80 138 9032 71	134.04
-	-
-	-
-	-
-	-
-	-
-	-

Fixed Point Fitting - PP x PP

(Dog Bone Type 2)

Isolates Containment



PN3.2 x PN6

Size Containment/Carrier	Code	Price
90/32	-	-
110/63	-	-
160/90	80 139 1690 37	235.97
200/110	80 139 2011 37	353.93
280/160	-	-
315/200	-	-
355/250	-	-

PN3.2 x PN10

Code	Price
-	-
80 139 1163 31	154.88
80 139 1690 31	235.97
80 139 2011 31	353.93
80 139 2816 31	481.33
80 139 3120 31	490.72
80 139 3525 31	568.19

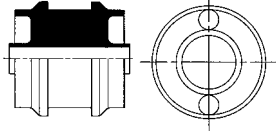
PN6 x PN10

Code	Price
80 139 9032 71	134.04
-	-
-	-
-	-
-	-
-	-
-	-

Fixed Point Fitting - PP x PP

(Dog Bone Type 2)

Continues Containment



PN3.2 x PN6

Size Containment/Carrier	Code	Price
90/32	-	
110/63	-	
160/90	80 149 1690 37	270.70
200/110	80 149 2011 37	407.50
280/160	-	
315/200	-	
355/250	-	

PN3.2 x PN10

Code	Price
-	
80 149 1163 31	193.98
80 149 1690 31	270.70
80 149 2011 31	407.50
80 149 2816 31	553.70
80 149 3120 31	563.84
80 149 3525 31	652.84

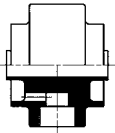
PN6 x PN10

Code	Price
80 149 9032 71	167.90
-	
-	
-	
-	
-	
-	

Fixed Point Fitting - PP x PP

(Leak Detection Connection)

Isolates Containment



PN3.2 x PN6

Size Containment/Carrier	Code	Price
90/32	-	
110/63	-	
160/90	80 140 1690 37	283.02
200/110	80 140 2011 37	323.54
280/160	-	
315/200	-	
355/250	-	

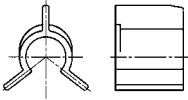
PN3.2 x PN10

Code	Price
-	
80 140 1163 31	240.30
80 140 1690 31	283.02
80 140 2011 31	323.54
80 140 2816 31	399.53
80 140 3120 31	453.82
80 140 3525 31	516.07

PN6 x PN10

Code	Price
80 140 9032 71	223.65
-	
-	
-	
-	
-	
-	

Spider Clip - PP



PN3.2 x PN6

Size Containment/Carrier	Code	Price
90/32	-	
110/63	80 099 1163 33	7.01
160/90	80 099 1690 33	9.27
200/110	80 099 2011 33	10.20
280/160	80 099 2816 33	16.65
315/200	80 099 3120 33	18.82
355/250	80 099 3525 33	19.69

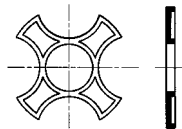
PN3.2 x PN10

Code	Price
-	
80 099 1163 33	7.01
80 099 1690 33	9.27
80 099 2011 33	10.20
80 099 2816 33	16.65
80 099 3120 33	18.82
80 099 3525 33	19.69

PN6 x PN10

Code	Price
-	
-	
-	
-	
-	
-	
-	

Support Disc - PP



PN3.2 x PN6

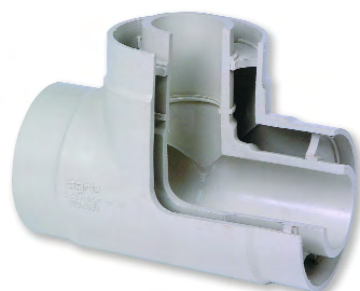
Size Containment/Carrier	Code	Price
90/32	-	
110/63	80 098 1163 33	7.01
160/90	80 098 1690 33	9.27
200/110	80 098 2011 33	10.20
280/160	80 098 2816 33	16.65
315/200	80 098 3120 33	18.82
355/250	80 098 3525 33	19.69

PN3.2 x PN10

Code	Price
-	
80 098 1163 33	7.01
80 098 1690 33	9.27
80 098 2011 33	10.20
80 098 2816 33	16.65
80 098 3120 33	18.82
80 098 3525 33	19.69

PN6 x PN10

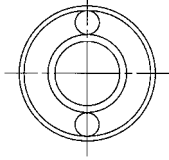
Code	Price
80 098 9032 17	5.74
-	
-	
-	
-	
-	
-	



polyethylene x polyethylene

Pipe - PE x PE

5m Lengths



SDR33/17.6 PN5 x PN10

Size Containment/Carrier	Code	Price/M
90/32	-	
110/63	-	
160/90	82 785 1690 37	69.05
200/110	82 785 2011 37	102.77
280/160	-	
315/200	-	
355/250	-	

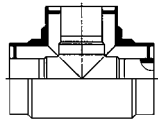
SDR33/11 PN5 x PN16

Code	Price/M
-	
82 785 1163 31	49.95
82 785 1690 31	73.83
82 785 2011 31	109.73
82 785 2816 31	197.61
82 785 3120 31	241.03
82 785 3525 31	322.81

SDR17.6/11 PN10 x PN16

Code	Price/M
82 785 9032 71	44.45
-	
-	
-	
-	
-	
-	

Tee 90° - PE x PE



Size Containment/Carrier	Code	Price
90/32	-	
110/63	-	
160/90	82 106 1690 37	262.75
200/110	82 106 2011 37	335.84
280/160	-	
315/200	-	
355/250	-	

Code	Price
-	
82 106 1163 31	173.71
82 106 1690 31	270.70
82 106 2011 31	343.06
82 106 2816 31	812.08
82 106 3120 31	1159.49
82 106 3525 31	1952.74

Code	Price
82 106 9032 71	143.74
-	
-	
-	
-	
-	
-	



Need advice?

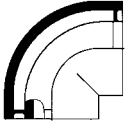
For help with double containment applications please call Kevin Nixon on:

0800 975 79 71

Or from outside of the UK:
+44 191 521 3111



Bend 90° - PE x PE



SDR33/17.6 PN5 x PN10

Size Containment/Carrier	Code	Price
90/32	-	
110/63	-	
160/90	82 101 1690 37	178.05
200/110	82 101 2011 37	235.24
280/160	-	
315/200	-	
355/250	-	

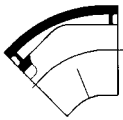
SDR33/11 PN5 x PN16

Code	Price
-	
82 101 1163 31	125.36
82 101 1690 31	180.23
82 101 2011 31	235.97
82 101 2816 31	526.92
82 101 3120 31	618.83
82 101 3525 31	1243.46

SDR17.6/11 PN10 x PN16

Code	Price
82 101 9032 71	99.30
-	
-	
-	
-	
-	
-	

Bend 45° - PE x PE

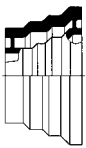


Size Containment/Carrier	Code	Price
90/32	-	
110/63	-	
160/90	82 102 1690 37	212.79
200/110	82 102 2011 37	278.66
280/160	-	
315/200	-	
355/250	-	

Code	Price
-	
82 102 1163 31	150.54
82 102 1690 31	215.68
82 102 2011 31	283.71
82 102 2816 31	618.12
82 102 3120 31	693.39
82 102 3525 31	1491.00

Code	Price
82 102 9032 71	119.01
-	
-	
-	
-	
-	
-	

Concentric Reducer - PE x PE



Size Containment/Carrier	Code	Price
110/63x90/32	-	
160/90x90/32	-	
160/90x110/63	82 107 9063 37	186.74
200/110x110/63	-	
200/110x160/90	82 107 1190 37	325.69
280/160x160/90	-	
280/160x200/110	-	
315/200x200/110	-	
315/200x280/160	-	
355/250x280/160	-	
355/250x315/200	-	

Code	Price
-	
82 107 9032 31	241.03
82 107 9063 31	187.47
82 107 1163 31	400.96
82 107 1190 31	327.15
82 107 1690 31	626.78
82 107 1611 31	626.78
82 107 2011 31	810.63
82 107 2016 31	810.63
82 107 2516 31	1729.83
82 107 2520 31	1524.29

Code	Price
82 107 6332 71	111.17
-	
-	
-	
-	
-	
-	
-	
-	
-	

Cap - PE x PE



Size Containment/Carrier	Code	Price
90/32	-	
110/63	-	
160/90	82 154 1690 37	159.24
200/110	82 154 2011 37	196.14
280/160	-	
315/200	-	
355/250	-	

Code	Price
-	
82 154 1163 31	115.08
82 154 1690 31	159.24
82 154 2011 31	196.14
82 154 2816 31	263.44
82 154 3120 31	327.88
82 154 3525 31	373.47

Code	Price
82 154 9032 71	105.08
-	
-	
-	
-	
-	
-	

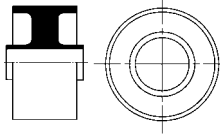


polyethylene x polyethylene

Fixed Point Fitting - PE x PE

(Dog Bone Type 1)

Isolates Containment



SDR33/17.6

PN5 x PN10

Size Containment/Carrier	Code	Price
90/32	-	
110/63	-	
160/90	82 137 1690 37	167.20
200/110	82 137 2011 37	205.57
280/160	-	
315/200	-	
355/250	-	

SDR33/11

PN5 x PN16

Code	Price
-	
82 137 1163 31	121.59
82 137 1690 31	167.20
82 137 2011 31	205.57
82 137 2816 31	276.50
82 137 3120 31	344.53
82 137 3525 31	392.29

SDR17.6/11

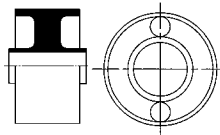
PN10 x PN16

Code	Price
82 137 9032 71	110.87
-	
-	
-	
-	
-	
-	

Fixed Point Fitting - PE x PE

(Dog Bone Type 1)

Continues Containment



Size Containment/Carrier	Code	Price
90/32	-	
110/63	-	
160/90	82 147 1690 37	191.81
200/110	82 147 2011 37	236.66
280/160	-	
315/200	-	
355/250	-	

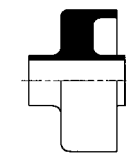
Code	Price
-	
82 147 1163 31	151.99
82 147 1690 31	191.81
82 147 2011 31	236.66
82 147 2816 31	318.45
82 147 3120 31	396.63
82 147 3525 31	450.92

Code	Price
82 147 9032 71	138.68
-	
-	
-	
-	
-	
-	

Fixed Point Fitting - PE x PE

(Dog Bone Type 1-A)

Terminates Containment



Size Containment/Carrier	Code	Price
90/32	-	
110/63	-	
160/90	82 136 1690 37	167.20
200/110	82 136 2011 37	205.57
280/160	-	
315/200	-	
355/250	-	

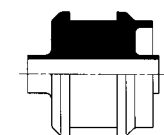
Code	Price
-	
82 136 1163 31	121.59
82 136 1690 31	167.20
82 136 2011 31	205.57
82 136 2816 31	276.50
82 136 3120 31	344.53
82 136 3525 31	392.29

Code	Price
82 136 9032 71	110.87
-	
-	
-	
-	
-	
-	

Fixed Point Fitting - PE x PE

(Dog Bone Type 2-A)

Terminates Containment



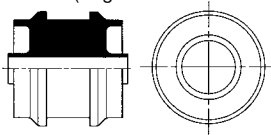
Size Containment/Carrier	Code	Price
90/32	-	
110/63	-	
160/90	82 138 1690 37	235.97
200/110	82 138 2011 37	353.93
280/160	-	
315/200	-	
355/250	-	

Code	Price
-	
82 138 1163 31	154.88
82 138 1690 31	235.97
82 138 2011 31	353.93
82 138 2816 31	481.33
82 138 3120 31	490.72
82 138 3525 31	568.19

Code	Price
82 138 9032 71	134.04
-	
-	
-	
-	
-	
-	

Fixed Point Fitting - PE x PE

(Dog Bone Type 2)



Size Containment/Carrier	Code	Price
90/32	-	
110/63	-	
160/90	82 139 1690 37	235.97
200/110	82 139 2011 37	353.93
280/160	-	
315/200	-	
355/250	-	

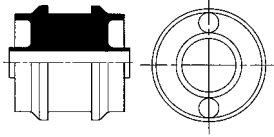
Code	Price
-	
82 139 1163 31	154.88
82 139 1690 31	235.97
82 139 2011 31	353.93
82 139 2816 31	481.33
82 139 3120 31	490.72
82 139 3525 31	568.19

Code	Price
82 139 9032 71	134.04
-	
-	
-	
-	
-	
-	

Fixed Point Fitting - PE x PE

(Dog Bone Type 2)

Continues Containment



SDR33/17.6

PN5 x PN10

Size Containment/Carrier	Code	Price
90/32	-	
110/63	-	
160/90	82 149 1690 37	270.70
200/110	82 149 2011 37	407.50
280/160	-	
315/200	-	
355/250	-	

SDR33/11

PN5 x PN16

Code	Price
-	
82 149 1163 31	193.98
82 149 1690 31	270.70
82 149 2011 31	407.50
82 149 2816 31	553.70
82 149 3120 31	563.84
82 149 3525 31	652.84

SDR17.6/11

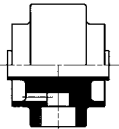
PN10 x PN16

Code	Price
82 149 9032 71	167.90
-	
-	
-	
-	
-	
-	

Fixed Point Fitting - PE x PE

(Leak Detection Connection)

Isolates Containment

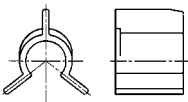


Size Containment/Carrier	Code	Price
90/32	-	
110/63	-	
160/90	82 140 1690 37	283.02
200/110	82 140 2011 37	323.54
280/160	-	
315/200	-	
355/250	-	

Code	Price
-	
82 140 1163 31	240.30
82 140 1690 31	283.02
82 140 2011 31	323.54
82 140 2816 31	399.53
82 140 3120 31	543.82
82 140 3525 31	516.07

Code	Price
82 140 9032 71	223.65
-	
-	
-	
-	
-	
-	

Spider Clip - PE

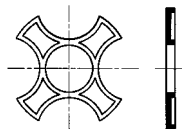


Size Containment/Carrier	Code	Price
90/32	-	
110/63	82 099 1163 33	7.01
160/90	82 099 1690 33	9.27
200/110	82 099 2011 33	10.20
280/160	82 099 2816 33	16.65
315/200	82 099 3120 33	18.82
355/250	82 099 3525 33	19.69

Code	Price
-	
82 099 1163 33	7.01
82 099 1690 33	9.27
82 099 2011 33	10.20
82 099 2816 33	16.65
82 099 3120 33	18.82
82 099 3525 33	19.69

Code	Price
-	
-	
-	
-	
-	
-	

Support Disc - PE



Size Containment/Carrier	Code	Price
90/32	-	
110/63	82 098 1163 33	7.01
160/90	82 098 1690 33	9.27
200/110	82 098 2011 33	10.20
280/160	82 098 2816 33	16.65
315/200	82 098 3120 33	18.82
355/250	82 098 3525 33	19.69

Code	Price
-	
82 098 1163 33	7.01
82 098 1690 33	9.27
82 098 2011 33	10.20
82 098 2816 33	16.65
82 098 3120 33	18.82
82 098 3525 33	19.69

Code	Price
82 098 9032 17	5.74
-	
-	
-	
-	
-	
-	

Fast Delivery

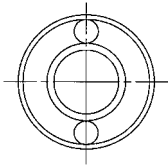
We deliver using our own dedicated vehicles or next day carrier. Using our standard delivery service you can expect to receive your order within 24 hours - to your warehouse, factory or job-site



polypropylene x polyethylene

Pipe - PE x PP

5m Lengths



PN6 x PN10

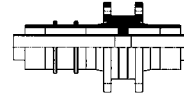
Size Containment/Carrier	Code	Price/M
90/32	83 795 9032 71	34.74
110/63	83 795 1163 71	59.93
160/90	83 795 1690 71	91.77
200/110	83 795 2011 71	128.55
280/160	83 795 2816 71	248.98

Polypropylene carrier pipe

Fixed Point Fitting - PE x PP

(Dog Bone Type 3)

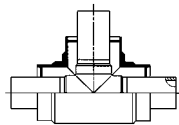
Isolates Containment



PN6 x PN10

Size Containment/Carrier	Code	Price
90/32	83 239 9032 71	259.11
110/63	83 239 1163 71	398.81
160/90	83 239 1690 71	618.83
200/110	83 239 2011 71	755.63
280/160	83 239 2816 71	1116.07

Tee 90° - PE x PP



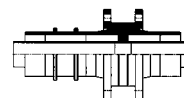
PN6 x PN10

Size Containment/Carrier	Code	Price
90/32	83 206 9032 71	99.30
110/63	83 206 1163 71	150.54
160/90	83 206 1690 71	222.92
200/110	83 206 2011 71	339.46
280/160	83 206 2816 71	755.63

Fixed Point Fitting - PE x PP

(Dog Bone Type 3)

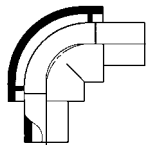
Continues Containment



PN6 x PN10

Size Containment/Carrier	Code	Price
90/32	83 249 9032 71	329.32
110/63	83 249 1163 71	471.19
160/90	83 249 1690 71	700.61
200/110	83 249 2011 71	841.03
280/160	83 249 2816 71	1220.29

Bend 90° - PE x PP



PN6 x PN10

Size Containment/Carrier	PN3.2 x PN6	
	Code	Price
90/32	83 201 9032 71	58.49
110/63	83 201 1163 71	85.41
160/90	83 201 1690 71	152.74
200/110	83 201 2011 71	217.87
280/160	83 201 2816 71	524.02

Fixed Point Fitting - PE x PP

(Dog Bone Type 3-A)

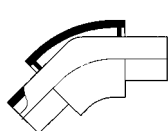
Terminates Containment



PN6 x PN10

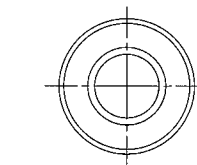
Size Containment/Carrier	Code	Price
90/32	83 238 9032 71	248.98
110/63	83 238 1163 71	382.89
160/90	83 238 1690 71	594.95
200/110	83 238 2011 71	715.95
280/160	83 238 2816 71	1040.81

Bend 45° - PE x PP

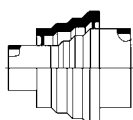


PN6 x PN10

Size Containment/Carrier	Code	Price
90/32	83 202 9032 71	63.71
110/63	83 202 1163 71	104.68
160/90	83 202 1690 71	165.02
200/110	83 202 2011 71	260.57
280/160	83 202 2816 71	700.61



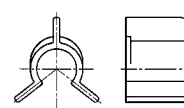
Concentric Reducer - PE x PP



PN6 x PN10

Size Containment/Carrier	Code	Price
110/63x90/32	83 207 6332 71	84.70
160/90x90/32	83 207 9032 71	124.06
160/90x125/63	83 207 9063 71	154.88
200/110x125/63	83 207 1163 71	246.82
200/110x160/90	83 207 1190 71	319.91
280/160x160/90	83 207 1690 71	188.20
280/160x200/110	83 207 1611 71	186.74

Spider Clip - PE

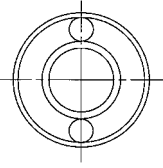


PN6 x PN10

Size Containment/Carrier	Code	Price
90/32	82 099 9032 71	5.74
110/63	82 099 1163 71	7.93
160/90	82 099 1690 71	9.27
200/110	82 099 2011 71	10.20
280/160	82 099 2816 71	16.65

**Pipe -
PE x PVDF**

5m Lengths



PN6 x PN16

Size Containment/Carrier	Code	Price/M
90/32	84 795 9032 72	84.54
110/63	84 795 1163 72	184.56

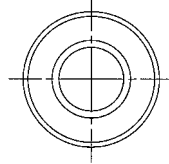
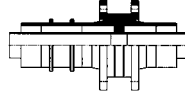
PN6 x PN10

160/90	84 795 1690 73	246.82
200/110	84 795 2011 73	359.00
280/160	84 795 2816 73	720.89

PVDF carrier pipe

**Fixed Point Fitting -
PE x PVDF**

(Dog Bone Type 3)
Isolates Containment



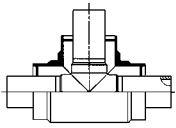
PN6 x PN16

Size Containment/Carrier	Code	Price
90/32	84 239 9032 72	485.65
110/63	84 239 1163 72	645.63

PN6 x PN10

160/90	84 239 1690 73	990.12
200/110	84 239 2011 73	1173.98
280/160	84 239 2816 73	2214.77

**Tee 90° -
PE x PVDF**



PN6 x PN16

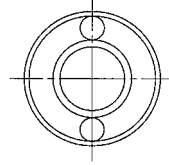
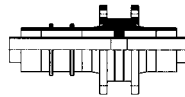
Size Containment/Carrier	Code	Price
90/32	84 206 9032 72	154.88
110/63	84 206 1163 72	351.77

PN6 x PN10

160/90	84 206 1690 73	722.34
200/110	84 206 2011 73	909.07
280/160	84 206 2816 73	2303.07

**Fixed Point Fitting -
PE x PVDF**

(Dog Bone Type 3)
Continues Containment



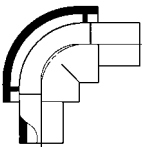
PN6 x PN16

Size Containment/Carrier	Code	Price
90/32	84 249 9032 72	555.88
110/63	84 249 1163 72	718.73

PN6 x PN10

160/90	84 249 1690 73	1074.09
200/110	84 249 2011 73	1257.92
280/160	84 249 2816 73	2319.00

**Bend 90° -
PE x PVDF**



PN6 x PN16

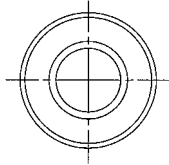
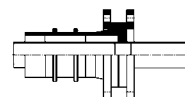
Size Containment/Carrier	Code	Price
90/32	84 201 9032 72	114.95
110/63	84 201 1163 72	292.41

PN6 x PN10

160/90	84 201 1690 73	561.66
200/110	84 201 2011 73	835.24
280/160	84 201 2816 73	2197.39

**Fixed Point Fitting -
PE x PVDF**

(Dog Bone Type 3-A)
Terminates Containment



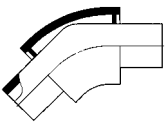
PN6 x PN16

Size Containment/Carrier	Code	Price
90/32	84 238 9032 72	471.19
110/63	84 238 1163 72	618.12

PN6 x PN10

160/90	84 238 1690 73	949.59
200/110	84 238 2011 73	1108.85
280/160	84 238 2816 73	2091.72

**Bend 45° -
PE x PVDF**



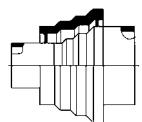
PN6 x PN16

Size Containment/Carrier	Code	Price
90/32	84 202 9032 72	115.36
110/63	84 202 1163 72	280.12

PN6 x PN10

160/90	84 202 1690 73	565.28
200/110	84 202 2011 73	830.90
280/160	84 202 2816 73	2395.71

**Concentric Reducer -
PE x PVDF**



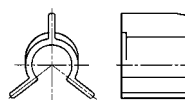
PN6 x PN16

Size Containment/Carrier	Code	Price/M
110/63x90/32	84 207 6332 72	165.75
160/90x90/32	84 207 9032 72	317.02
160/90x125/63	84 207 9063 72	364.78

PN6 x PN10

200/110x125/63	84 207 1163 73	561.66
200/110x160/90	84 207 1190 73	673.10
280/160x160/90	84 207 1690 73	898.93
280/160x200/110	84 207 1611 73	1163.85

**Spider Clip -
PP**

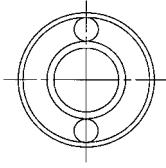


PN6 x PN16/PN10

Size Containment/Carrier	Code	Price
90/32	80 099 9032 17	5.74
110/63	80 099 1163 17	8.32
160/90	80 099 1690 17	9.27
200/110	80 099 2011 17	10.20
280/160	80 099 2816 17	16.65

Pipe - PP x PVDF

5m Lengths



PN6 x PN16

Size Containment/Carrier	Code	Price/M
90/32	81 795 9032 72	84.54
110/63	81 795 1163 72	184.56

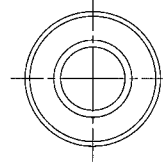
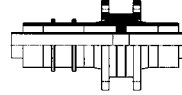
PN6 x PN10

160/90	81 795 1690 73	246.82
200/110	81 795 2011 73	359.00
280/160	81 795 2816 73	720.89

PVDF carrier pipe

Fixed Point Fitting - PP x PVDF

(Dog Bone Type 3)
Isolates Containment



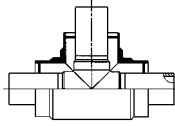
PN6 x PN16

Size Containment/Carrier	Code	Price
90/32	81 239 9032 72	485.65
110/63	81 239 1163 72	645.63

PN6 x PN10

160/90	81 239 1690 73	990.12
200/110	81 239 2011 73	1173.98
280/160	81 239 2816 73	2214.77

Tee 90° - PP x PVDF



PN6 x PN16

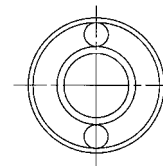
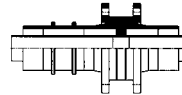
Size Containment/Carrier	Code	Price
90/32	81 206 9032 72	155.62
110/63	81 206 1163 72	353.93

PN6 x PN10

160/90	81 206 1690 73	725.24
200/110	81 206 2011 73	914.85
280/160	81 206 2816 73	2319.00

Fixed Point Fitting - PP x PVDF

(Dog Bone Type 3)
Continues Containment



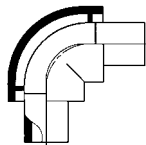
PN6 x PN16

Size Containment/Carrier	Code	Price
90/32	81 249 9032 72	555.88
110/63	81 249 1163 72	718.73

PN6 x PN10

160/90	81 249 1690 73	1074.09
200/110	81 249 2011 73	1257.92
280/160	81 249 2816 73	2319.00

Bend 90° - PP x PVDF



PN6 x PN16

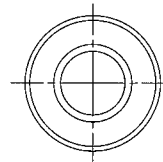
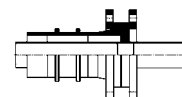
Size Containment/Carrier	Code	Price
90/32	81 201 9032 72	115.24
110/63	81 201 1163 72	293.14

PN6 x PN10

160/90	81 201 1690 73	563.84
200/110	81 201 2011 73	838.14
280/160	81 201 2816 73	2206.08

Fixed Point Fitting - PP x PVDF

(Dog Bone Type 3-A)
Terminates Containment



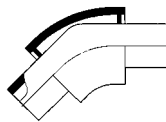
PN6 x PN16

Size Containment/Carrier	Code	Price
90/32	81 238 9032 72	471.19
110/63	81 238 1163 72	618.12

PN6 x PN10

160/90	81 238 1690 73	949.59
200/110	81 238 2011 73	1108.85
280/160	81 238 2816 73	2091.72

Bend 45° - PP x PVDF



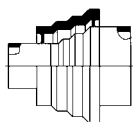
PN6 x PN16

Size Containment/Carrier	Code	Price
90/32	81 202 9032 72	100.61
110/63	81 202 1163 72	265.63

PN6 x PN10

160/90	81 202 1690 73	550.08
200/110	81 202 2011 73	807.75
280/160	81 202 2816 73	2366.77

Concentric Reducer - PP x PVDF



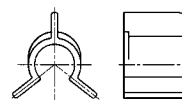
PN6 x PN16

Size Containment/Carrier	Code	Price
110/63x90/32	81 207 6332 72	166.48
160/90x90/32	81 207 9032 72	318.45
160/90x125/63	81 207 9063 72	366.23

PN6 x PN10

200/110x125/63	81 207 1163 73	563.10
200/110x160/90	81 207 1190 73	676.74
280/160x160/90	81 207 1690 73	903.28
280/160x200/110	81 207 1611 73	1168.19

Spider Clip - PP

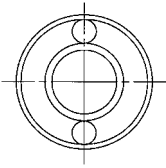


PN6 x PN16/PN10

Size Containment/Carrier	Code	Price
90/32	80 099 9032 17	5.74
110/63	80 099 1163 17	8.32
160/90	80 099 1690 17	9.27
200/110	80 099 2011 17	10.20
280/160	80 099 2816 17	16.65

Pipe - PVDF x PVDF

5m Lengths

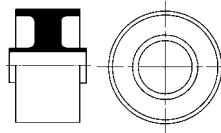


PN10 x PN16

Size Containment/Carrier	Code	Price/M
90/32	85 795 9032 32	on application
110/63	85 795 1163 32	on application
160/90	85 795 1690 32	on application
200/110	85 795 2011 32	on application
250/160	85 795 2516 32	on application

Fixed Point Fitting - PVDF x PVDF
(Dog Bone Type 3)

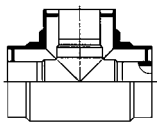
Isolates Containment



PN10 x PN16

Size Containment/Carrier	Code	Price
90/32	85 239 9032 32	on application
110/63	85 239 1163 32	on application
160/90	85 239 1690 32	on application
200/110	85 239 2011 32	on application
250/160	85 239 2516 32	on application

Tee 90° - PVDF x PVDF

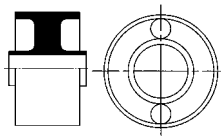


PN10 x PN16

Size Containment/Carrier	Code	Price
90/32	85 206 9032 32	on application
110/63	85 206 1163 32	on application
160/90	85 206 1690 32	on application
200/110	85 206 2011 32	on application
250/160	85 206 2516 32	on application

Fixed Point Fitting - PVDF x PVDF
(Dog Bone Type 3)

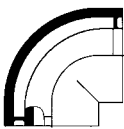
Continues Containment



PN10 x PN16

Size Containment/Carrier	Code	Price
90/32	85 249 9032 32	on application
110/63	85 249 1163 32	on application
160/90	85 249 1690 32	on application
200/110	85 249 2011 32	on application
250/160	85 249 2516 32	on application

Bend 90° - PVDF x PVDF

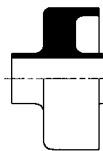


PN10 x PN16

Size Containment/Carrier	Code	Price
90/32	85 201 9032 32	on application
110/63	85 201 1163 32	on application
160/90	85 201 1690 32	on application
200/110	85 201 2011 32	on application
250/160	85 201 2516 32	on application

Fixed Point Fitting - PVDF x PVDF
(Dog Bone Type 3-A)

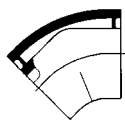
Terminates Containment



PN10 x PN16

Size Containment/Carrier	Code	Price
90/32	85 238 9032 32	on application
110/63	85 238 1163 32	on application
160/90	85 238 1690 32	on application
200/110	85 238 2011 32	on application
250/160	85 238 2516 32	on application

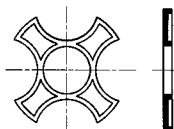
Bend 45° - PVDF x PVDF



PN10 x PN16

Size Containment/Carrier	Code	Price
90/32	85 202 9032 32	on application
110/63	85 202 1163 32	on application
160/90	85 202 1690 32	on application
200/110	85 202 2011 32	on application
250/160	85 202 2516 32	on application

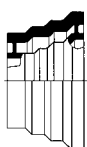
Support Disc - PVDF



PN10 x PN16

Size Containment/Carrier	Code	Price
90/32	85 099 9032 32	on application
110/63	85 099 1163 32	on application
160/90	85 099 1690 32	on application
200/110	85 099 2011 32	on application
250/160	85 099 2516 32	on application

Concentric Reducer - PVDF x PVDF



PN10 x PN16

Size Containment/Carrier	Code	Price
110/63x90/32	85 207 6332 32	on application
160/90x90/32	85 207 9032 32	on application
200/110x110/63	85 207 1163 32	on application
200/110x160/90	85 207 1190 32	on application
250/160x160/90	85 207 1690 32	on application
250/160x200/110	85 207 1611 32	on application



Durapipe PL-X is a high performance, fusion welded, multi layered PE pipe system, supplied as a Secondary Containment product range specifically designed for safe transfer of fuel based liquids.

All products are made from virgin polyethylene of high density (PE80 or PE100). The pipe is a composite material co-extruded with a polyamide liner using the latest extrusion technology, resulting in consistent and technically superior performance.

The tough outer layer of Polyethylene provides excellent resistance to abrasion, mechanical and physical abuse and is corrosion and maintenance free. The highly visible bonded polyamide bore layer completes the composite pipe structure ensuring permeation, low absorption and dimensional stability. Impermeable to diesel, fuel oils and their vapours, Durapipe PLX exceeds the requirements of international standards and provide complete security against fuel loss.

Additional security against accidental fuel loss is achieved by using Durapipe PLX pipe systems. Durapipe PLX exceeds the industry requirements regarding secondary containment of pressurised fuel delivery systems and provides an opportunity for continuous interstitial monitoring.

This product range offers two different types of Secondary Containment systems;

Close Fit	Size ranges 32x40, 50x63, 63x75mm for below ground applications. Primary - Polyethylene black with orange polyamide bore layer. Secondary outer pipe - Polyethylene green with Polyethylene primary pipe. Fittings - Polyethylene black.
Pipe-In-Pipe	Size ranges 32x63, 50x90, 63x110, 90x160, 110x160mm for above and below ground applications. Primary - Polyethylene black with orange polyamide bore layer. Secondary outer pipe - Polyethylene black with Polyethylene primary pipe. Fittings - Polyethylene black.

Primary Pipe sizes 32-315mm available upon request.

Components in Durapipe PLX pipework systems must be welded by electrofusion techniques. Electrofusion technology works on the principle of an electric heating coil within the socket melting material within the fittings, causing the surface of the pipe to melt. When molten material cools it establishes a strong weld between the fitting and the pipe.

- Durapipe PLX performs to a maximum pressure rating of 10bar with full vacuum.
- Durapipe PLX Primary pipe has a maximum pressure rating of 10bar at 20°C
- Durapipe PLX Secondary pipe has a maximum pressure rating of 4bar at 20°C

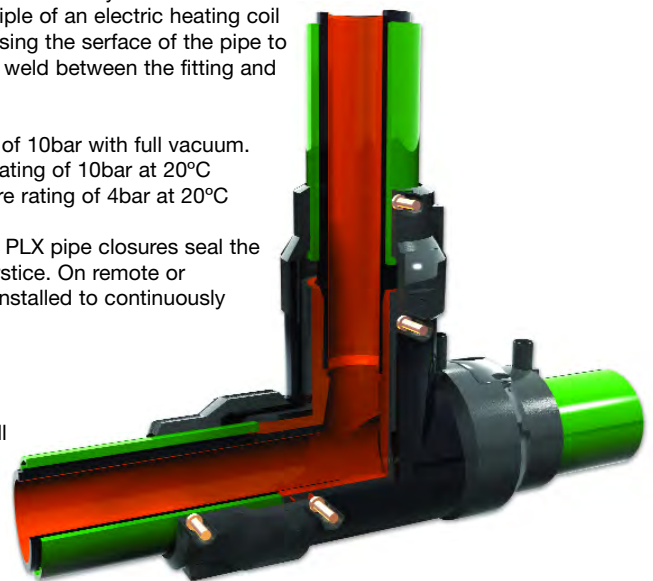
Durapipe PLX allows for Interstitial Monitoring. Durapipe PLX pipe closures seal the secondary pipes allowing for periodic testing of the interstice. On remote or unattended installations leak detection systems can be installed to continuously monitor for accidental losses and system damage.

Chemical resistance

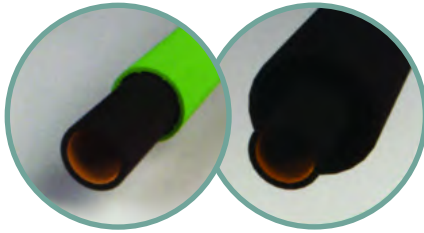
Durapipe PLX displays excellent chemical resistance to all fuels including, diesels, fuel oils and biofuels.

Weathering resistance

Durapipe PLX has a 30 year design life. PLX Secondary containment systems can be used above and below ground. Close-Fit systems can only be used in below ground applications due to no UV resistance. Pip-In-Pipe systems, which are supplied with black polyethylene secondary pipe are stabilised against the effects of UV radiation and may therefore safely be used outdoors.



Secondary Containment System

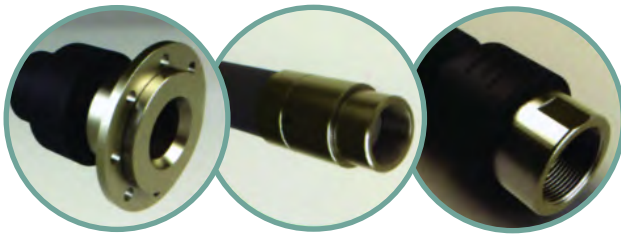


PLX Pipe

PLX Close-Fit:- Used for below ground sections of the system and available in straight lengths or coils.
PLX Pipe-in-Pipe:- Used for above ground fuel transfer applications.

Both pipes are co-extruded with a polyamide liner using the latest extrusion technology, resulting in consistent and technically superior performance.

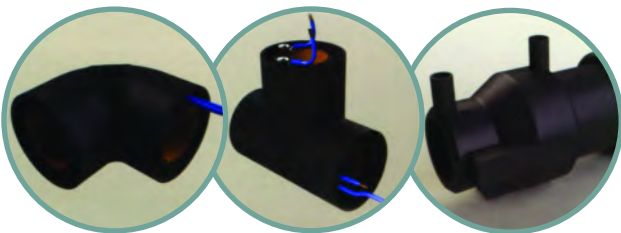
Size range from 32mm - 160mm



PLX Transition Fittings

PLX Transitions fittings ensure the safe and continuous flow of fuel when connecting to and from pumps, tanks and other metal threaded and flanged connections. Each transition fitting has been innovatively designed and manufactured using the highest quality PE and a wide range of metals. With the process of installation in mind; each fitting is developed to save time and costs during the installation process. All products are available in Secondary Containment.

Size range from 32mm - 160mm



PLX Electrofusion and Spigot Fittings

The PLX fittings range contains a wide range of couplers, elbows, tee's and closures, enabling interstitial monitoring and leak detection of the system. All PLX electrofusion fittings are manufactured with the highest manufacturing precision with precisely positioned electrical heated coils ensuring optimum melt pressure during installation.

Size range from 32mm - 160mm



Agrusafe Sure Grip



The Sure Grip® concrete protective liner system, developed and patented by Agru, offers a high-quality solution for innovative long-term protection of concrete structures and fulfills the highest requirements for acid proof construction.

Agru Sure Grip® concrete protective liner systems made of HDPE, HDPE-el, PVDF and ECTFE are produced with state of the art manufacturing facilities. The system has been successfully applied worldwide for more than 20 years.

Advantages of thermoplastics

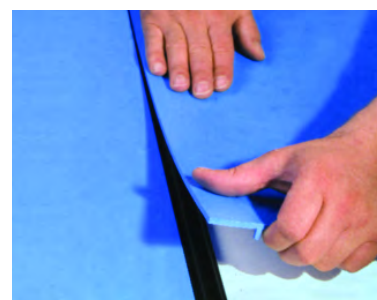
- Applicable for a wide range of structures
- Absolute mechanical anchoring of the plastic liner in the concrete
- Bridging of concrete cracks
- High impact resistance and excellent shear resistance
- Suitable for the storage and transport of aggressive media
- Chemical resistance and long life expectancy with low maintenance effort
- Resistant in a wide temperature range (up to 100°C), PVDF, ECTFE (up to 120°C)
- Available in UV-resistant materials
- Easy and safe in installation

Innovative and unique design

Based on the unique and patented design of the V-anchor studs and their staggered order an exceptional mechanical anchoring to the concrete is reached.

This design guarantees absolute integrity of the installed system even though there are different thermal expansion appearing.

Studs with different slopes and heights offer an additional advantage for various applications.





Harvel® EnviroKing™ has been developed as a clear PVC piping that is suitable for exposure to sunlight. Unique UV blocking technology reduces harmful ultraviolet light wavelengths from penetrating the plastic while allowing beneficial wavelengths through.

These unique attributes provide a durable containment vessel that has been optimized to improve light transmission through the pipe without jeopardizing product integrity. This enables Harvel® EnviroKing™ to provide a cost-effective solution for photobioreactor tubing and other outdoor applications exposed to sunlight where transparency is required.

Product Features

- Manufactured to both ThinWall™ and standard Schedule 40 dimensions.
- Joined utilizing simple solvent-welded joining techniques
- Manufactured to IPS dimensions - Fully compatible with standard PVC pipe, fittings, and valves
- Corrosion resistant
- Non-conductive
- Lightweight, easy to handle and install
- Lower overall installed cost than glass, acrylic, or other transparent alternatives

Harvel EnviroKingUV™ ThinWall™

Harvel EnviroKingUV™ is a low-pressure containment pipe which provides optimum dimensions for use as photobioreactor vessels and similar applications. For example, when used in photobioreactors, the unique wall dimensions improve light transmission characteristics beneficial for enhanced algae growth, while maintaining product rigidity.

Nominal Pipe Size (inches)	O.D.	Average I.D.	Min. Wall	Nominal Wt./Ft.	Max. W.P. PSI*
2	2.375	2.173	0.091	0.456	80
3	3.500	3.210	0.135	0.966	80
4	4.500	4.134	0.173	1.569	80
6	6.625	6.251	0.172	2.391	70
8	8.625	8.251	0.172	3.134	53
10	10.750	10.376	0.172	3.923	43
12	12.750	12.376	0.172	4.666	36

* Pressure ratings shown are for water at 20°C

Harvel EnviroKingUV™ Schedule 40

Harvel EnviroKingUV™ is also manufactured in IPS sizes to Schedule 40 dimensions, which provide sufficient wall thickness for many pressure applications. It is suitable for use in both positive and negative pressure applications (i.e., vacuum service).

Nominal Pipe Size (inches)	O.D.	Average I.D.	Min. Wall	Nominal Wt./Ft.	Max. W.P. PSI*
1/2	0.840	0.602	0.109	0.170	300
3/4	1.050	0.804	0.113	0.226	240
1	1.315	1.029	0.133	0.333	220
1 1/4	1.660	1.360	0.140	0.450	180
1 1/2	1.900	1.590	0.145	0.537	170
2	2.375	2.047	0.154	0.720	140
2 1/2	2.875	2.445	0.203	1.136	150
3	3.500	3.042	0.216	1.488	130
3 1/2	4.000	3.521	0.226	1.789	120
4	4.500	3.998	0.237	2.118	110
6	6.625	6.031	0.280	3.733	90

* Pressure ratings shown are for water at 20°C

