

plain fittings mm sizes



Tee 90°



Size	Code	Price
16	11 122 305	2.38
20	11 122 306	2.84
25	11 122 307	3.96
32	11 122 308	5.45
40	11 122 309	7.85
50	11 122 310	11.52
63	11 122 311	17.61
75	11 122 312	30.49
90	11 122 313	51.39
110	11 122 314	75.45
125	11 122 315	149.43
140	11 122 316	200.34
160	11 122 317	263.66
200	11 122 318	384.98
225	11 122 319	411.08
250	11 122 320	711.67
315	11 122 323	1066.41

Reducing Tee 90°



Size	Code	Price
25x20	11 124 415	4.28
32x20	11 124 418	5.94
32x25	11 124 419	7.14
40x20	11 124 421	8.72
40x25	11 124 422	9.76
50x20	11 124 424	12.59
50x25	11 124 425	12.59
50x32	11 124 426	12.59
63x25	11 124 429	19.49
63x32	11 124 430	19.49
75x32	11 124 435	41.63
75x40	11 124 436	41.63
75x50	11 124 437	41.63
75x63	11 124 438	41.63
90x40	11 124 441	58.83
90x50	11 124 442	58.83
90x63	11 124 443	58.83
90x75	11 124 444	58.83
110x50	11 124 448	93.96
110x63	11 124 449	93.96
110x75	11 124 450	93.96
110x90	11 124 451	93.96

Swept Tee 90°



Size	Code	Price
32	11 148 308	10.68
50	11 148 310	18.06
63	11 148 311	26.65
75	01 148 108	44.74
110	11 148 314	118.73

Tee 45°



Size	Code	Price
20	11 418 306	12.73
25	11 418 307	13.44
32	11 418 308	15.23
40	11 418 309	18.44
50	11 418 310	23.09
63	11 418 311	35.23



Pressure Ratings

All Durapipe metric ABS fittings are suitable for continuous use at pressures up to 10 bar at 20°C.

Pipe Availability

We typically hold over
120 miles of pipe
in stock for immediate despatch





Elbow 90°



Size	Code	Price
16	11 115 305	2.22
20	11 115 306	2.50
25	11 115 307	2.98
32	11 115 308	4.16
40	11 115 309	7.04
50	11 115 310	9.16
63	11 115 311	13.91
75	11 115 312	26.64
90	11 115 313	39.98
110	11 115 314	59.71
125	11 115 315	112.08
140	11 115 316	137.78
160	11 115 317	240.31
200	11 115 318	337.76
225	11 115 319	369.06
250	11 115 320	610.01
315	11 115 323	908.49

Elbow 45°



Size	Code	Price
16	11 119 305	4.17
20	11 119 306	4.79
25	11 119 307	4.88
32	11 119 308	6.07
40	11 119 309	8.92
50	11 119 310	11.06
63	11 119 311	15.36
75	11 119 312	24.27
90	11 119 313	36.16
110	11 119 314	74.95
125	11 119 315	113.94
140	11 119 316	127.30
160	11 119 317	155.36
200	11 119 318	273.76
225	11 119 319	355.74
250	11 119 320	450.45
315	11 119 323	826.31

Bend 90°



Size	Code	Price
20	11 118 306	9.64
25	11 118 307	11.43
32	11 118 308	15.69
40	11 118 309	22.73
50	11 118 310	28.31
63	11 118 311	37.37
75	11 118 312	74.24
90	11 118 313	95.42
110	11 118 314	158.02

Bend 90°

Long Radius



Size	Code	Price
125	11 309 315	232.24
140	11 309 316	422.35
160	11 309 317	444.96
200	11 309 318	754.05
225	11 309 319	1115.19

Other angles available on request

plain fittings mm sizes

Socket



Size	Code	Price
16	11 100 305	1.69
20	11 100 306	1.83
25	11 100 307	2.06
32	11 100 308	2.38
40	11 100 309	4.17
50	11 100 310	5.01
63	11 100 311	7.04
75	11 100 312	15.36
90	11 100 313	28.31
110	11 100 314	40.18
125	11 100 315	63.78
140	11 100 316	78.77
160	11 100 317	100.41
200	11 100 318	171.91
225	11 100 319	200.54
250	11 100 320	363.43
315	11 100 323	515.90

Reducing Socket



Size	Code	Price
25x20/16	11 114 412	1.69
32x25/20	11 114 415	2.37
40x32/25	11 114 419	2.75
50x40/32	11 114 423	3.96
63x50/40	11 114 427	5.82
75x63/50	11 114 432	15.60
90x75/63	11 114 438	20.58
110x90/75	11 114 444	26.44
125x110/90	11 114 451	39.23
140x125/110	11 114 459	69.44
160x140/125	11 114 467	94.71
200x160/140	11 114 476	144.44
225x200/160	11 114 487	204.63

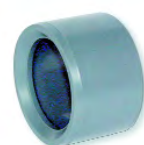
Adaptor Socket

Inch x mm



Size	Code	Price
1/2x20	11 345 102	2.50
3/4x25	11 345 103	2.82
1x32	11 345 104	3.43
1 1/4x40	11 345 105	4.64
1 1/2x50	11 345 106	6.77
2x63	11 345 107	15.36
3x90	11 345 109	28.08
4x110	11 345 110	45.43
6x160	11 345 112	105.40

Reducing Bush



Size	Code	Price
20x16	11 109 412	1.61
25x20	11 109 415	2.06
32x16	11 109 417	2.62
32x25	11 109 419	2.62
40x32	11 109 423	3.46
50x20	11 109 424	4.51
50x25	11 109 425	4.51
50x32	11 109 426	4.51
50x40	11 109 427	4.51
63x25	11 109 429	5.82
63x32	11 109 430	5.82
63x50	11 109 432	5.82
75x63	11 109 438	10.68
90x50	11 109 442	16.79
90x63	11 109 443	16.79
90x75	11 109 444	18.32
110x63	11 109 449	23.09
110x90	11 109 451	23.09
125x110	11 109 459	40.70
140x125	11 109 467	64.50
160x90	11 109 473	70.68
160x110	11 109 474	70.68
160x140	11 109 476	87.34
200x160	11 109 487	102.21
225x160	11 109 495	146.27
225x200	11 109 496	146.27
250x225	11 109 499	387.20
315x250	11 109 503	444.50

Union

EPDM O-Ring



Size	Code	Price
16	11 205 305	8.21
20	11 205 306	9.89
25	11 205 307	10.68
32	11 205 308	14.38
40	11 205 309	17.61
50	11 205 310	24.27
63	11 205 311	31.65
75	11 205 312	76.59
90	11 205 313	117.31
110	11 205 314	151.07

Cap

Union

FPM O-Ring



Size	Code	Price
16	11 204 305	8.71
20	11 204 306	10.57
25	11 204 307	11.37
32	11 204 308	15.31
40	11 204 309	18.70
50	11 204 310	26.00
63	11 204 311	33.71
75	11 204 312	88.08
90	11 204 313	134.93
110	11 204 314	173.76



Size	Code	Price
16	11 149 305	1.61
20	11 149 306	1.93
25	11 149 307	2.21
32	11 149 308	2.62
40	11 149 309	4.17
50	11 149 310	6.77
63	11 149 311	8.33
75	11 149 312	19.75
90	11 149 313	25.21
110	11 149 314	38.54

Stub Flange

Serrated Face



Size	Code	Price
16	11 135 305	2.02
20	11 135 306	2.16
25	11 135 307	2.33
32	11 135 308	3.02
40	11 135 309	4.79
50	11 135 310	7.85
63	11 135 311	11.52
75	11 135 312	18.32
90	11 135 313	22.58
110	11 135 314	29.28
125	11 135 315	58.09
140	11 135 316	67.08
160	11 135 317	75.92
200	11 135 318	77.91
225	11 135 319	151.72
250	11 135 320	262.42
315	11 135 323	308.46

Blind Flange

Drilled BS4504 PN10/16



Size	Code	Price
32	11 323 308	27.85
40	11 323 309	30.23
50	11 323 310	31.65
63	11 323 311	35.68
75	11 323 312	50.24
90	11 323 313	62.13
110	11 323 314	81.39
125	11 323 315	111.83
140	11 323 316	121.35
160	11 323 317	155.61

Stub Gasket

EPDM



Size	Code	Price
16	861-_-003	0.50
20	861-_-005	0.50
25	861-_-007	0.58
32	861-_-010	0.64
40	861-_-012	0.80
50	861-_-015	0.96
63	861-_-020	1.65
75	861-_-025	2.02
90	861-_-030	2.17
110	861-_-040	3.16
125	861-_-125	4.07
140	861-_-051	4.07
160	861-_-061	4.66
200	861-_-082	9.25
225	861-_-081	9.25
250	861-_-101	11.34
315	861-_-120	12.86

Complete code when ordering
Insert 'ISO' for NP10/16; 'A' for ANSI
150; 'E' for Table D/E

Stub Gasket

FPM



Size	Code	Price
16	862-_-003	2.34
20	862-_-005	2.34
25	862-_-007	3.48
32	862-_-010	4.59
40	862-_-012	7.36
50	862-_-015	8.05
63	862-_-020	10.60
75	862-_-025	15.34
90	862-_-030	20.01
110	862-_-040	34.14
125	862-_-125	36.07
140	862-_-051	56.98
160	862-_-061	56.98
200	862-_-082	68.24
225	862-_-081	68.24
250	862-_-101	92.89
315	862-_-120	96.97

Complete code when ordering
Insert 'ISO' for NP10/16; 'A' for ANSI
150; 'E' for Table D/E

Gasket

EPDM - full face



Size	Code	Price
16	863-_-003	1.74
20	863-_-005	1.74
25	863-_-007	1.96
32	863-_-010	2.34
40	863-_-012	2.79
50	863-_-015	3.31
63	863-_-020	4.07
75	863-_-025	4.66
90	863-_-030	5.71
110	863-_-040	7.98
125	863-_-125	8.19
140	863-_-051	8.19
160	863-_-061	12.86
200	863-_-082	15.19
225	863-_-081	15.19
250	863-_-101	24.57
315	863-_-120	35.47

Complete code when ordering
Insert 'ISO' for NP10/16; 'A' for ANSI
150; 'E' for Table D/E

Gasket

FPM - full face



Size	Code	Price
16	864-_-003	13.82
20	864-_-005	13.82
25	864-_-007	15.93
32	864-_-010	19.84
40	864-_-012	21.81
50	864-_-015	25.84
63	864-_-020	33.22
75	864-_-025	40.68
90	864-_-030	47.05
110	864-_-040	64.34
125	864-_-125	96.11
140	864-_-051	96.11
160	864-_-061	104.63
200	864-_-082	113.96
225	864-_-081	113.96
250	864-_-101	137.57
315	864-_-120	178.13

Complete code when ordering
Insert 'ISO' for NP10/16; 'A' for ANSI
150; 'E' for Table D/E



Flange Pressure Ratings

Not all ABS flanges carry the same pressure rating as the pipe.

This is the maximum working pressure of the flange at 20°C:-

BS 10 Table D: 100 psi (6.9 bar)

BS 10 Table E: 200 psi (13.8 bar)

BS 4504 PN10: 10 bar

BS 4504 PN16: 16 bar

ANSI 150: 10 bar

Take care to select the correct flange for the job.



Backing Ring NP10/16

Galvanised Mild Steel

Size	Code	Price
16	860-003-12NP	6.47
20	860-005-12NP	6.47
25	860-007-12NP	6.85
32	860-010-12NP	8.13
40	860-012-12NP	8.64
50	860-015-12NP	9.48
63	860-020-11NP	13.39
75	860-025-11NP	18.33
90	860-030-11NP	21.20
110	860-040-11NP	27.11
125	860-125-12NP	37.75
140	860-050-11NP	37.75
160	860-060-13NP	43.04
200*	860-080-14N	60.52
225*	860-225-12N	59.39
250*	860-100-14N	84.04
315*	860-120-14N	114.24

*NP10 only



Valve Support Plate

Galvanised Mild Steel- Drilled
NP10/16

Size	Code	Price
16	31 459 305	17.23
20	31 459 306	18.67
25	31 459 307	19.46
32	31 459 308	21.04
50	31 459 310	29.16
63	31 459 311	33.16
75	31 459 312	36.01
90	31 459 313	44.73
110	31 459 314	52.91



Backing Ring ANSI 150

Galvanised Mild Steel

Size	Code	Price
20	860-005-12A	6.47
25	860-007-12A	6.85
32	860-010-12A	8.13
40	860-012-12A	8.64
50	860-015-12A	9.48
63	860-020-11A	13.39
75	860-025-11A	18.33
90	860-030-11A	21.20
110	860-040-11A	27.11

Will it be in stock?

Last year we shipped more than **25,000** consignments, and more than

95%

were complete, first time!



Union

Plain Socket x Brass BSP Female Thread



Size	Code	Price
16x ³ / ₈	11 216 305	12.00
20x ¹ / ₂	11 216 306	14.38
25x ³ / ₄	11 216 307	21.07
32x1	11 216 308	24.27
40x1 ¹ / ₄	11 216 309	33.55
50x1 ¹ / ₂	11 216 310	46.35
63x2	11 216 311	69.97

Union

Plain Socket x Brass BSP Male Thread



Size	Code	Price
16x ³ / ₈	11 217 305	12.36
20x ¹ / ₂	11 217 306	14.63
25x ³ / ₄	11 217 307	21.17
32x1	11 217 308	24.27
40x1 ¹ / ₄	11 217 309	34.51
50x1 ¹ / ₂	11 217 310	46.87
63x2	11 217 311	73.03

PTFE Tape

BS7786

Roll Size: 12m x 12m x 0.075mm
Order Code: 767-120
Price: 0.87



Adaptor

Plain Spigot/Socket x BSP Male Thread



Size	Code	Price
16/12x ³ / ₈	11 151 331	2.28
20/16x ³ / ₈	11 151 332	3.12
20/16x ¹ / ₂	11 151 333	3.12
25/20x ¹ / ₂	11 151 334	3.34
25/20x ³ / ₄	11 151 335	3.34
32/25x ¹ / ₂	11 151 352	4.65
32/25x ³ / ₄	11 151 336	5.01
32/25x1	11 151 337	5.01
40/32x1	11 151 338	7.14
40/32x1 ¹ / ₄	11 151 339	7.14
50/40x1 ¹ / ₄	11 151 340	9.64
50/40x1 ¹ / ₂	11 151 341	9.64
63/50x1 ¹ / ₂	11 151 342	13.32
63/50x2	11 151 343	13.32
75/63x2	11 151 345	22.15

Adaptor

Plain Spigot/Socket x BSP Female Thread



Size	Code	Price
16/12x ³ / ₈	11 153 331	4.51
20/16x ¹ / ₂	11 153 333	5.37
25/20x ³ / ₄	11 153 335	6.41
32/25x1	11 153 337	7.71
40/32x1 ¹ / ₄	11 153 339	9.64
50/40x1 ¹ / ₂	11 153 341	12.85
63/50x2	11 153 343	15.69

Hose Adaptor

Size	Code	Price
16	11 158 305	1.93
20	11 158 306	2.75
25	11 158 307	2.95
32	11 158 308	3.34

Fast Delivery

We deliver using our own dedicated vehicles or next day carrier. Using our standard delivery service you can expect to receive your order within 24 hours - to your warehouse, factory or job-site

